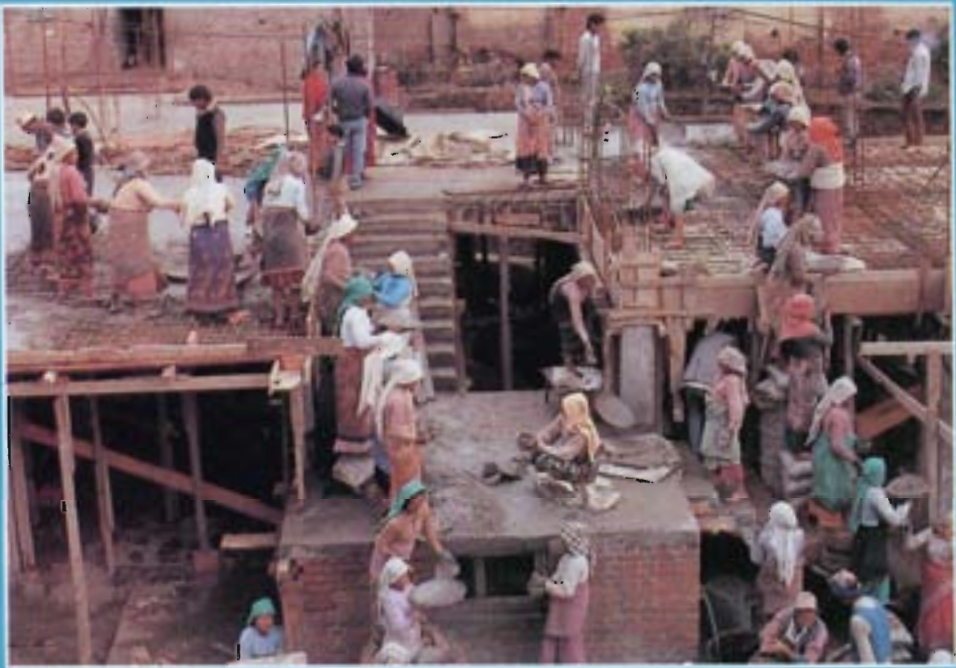




PEOPLE AND JOBS IN THE MOUNTAINS

Report of the

**International Workshop on Off-Farm Employment Generation
in the Hindu Kush-Himalaya Region**



**Organised by ICIMOD in collaboration with the
Department of Environment, Forests and
Wildlife, Government of India**

**Dehra Dun
India
17-19 May 1986**

ICIMOD PHASE I Workshop Series

The International Centre for Integrated Mountain Development began professional activities in September 1984, with the first objective of reviewing development and environmental management experience in the Hindu Kush - Himalaya Region. An International Workshop was planned for each of four major fields to review the state of knowledge and practical experience, and also to provide an opportunity for the exchange of professional expertise with regard to integrated mountain development.

ICIMOD completed Phase I activities in June 1986, having held :

- o the International Workshop on Watershed Management in the Kush - Himalaya -- Chengdu, China, 14 to 19 October 1985
- o the International Workshop on Planned Urbanisation and Rural Urban Linkages in the Hindu Kush - Himalaya Region -- Kathmandu, Nepal, 25 to 29 March 1986
- o the International Workshop on District Energy Planning and Management for Integrated Mountain Development -- Kathmandu, Nepal, 3 to 5 May 1986
- o International Workshop on Off - Farm Employment Generation in the Hindu Kush - Himalaya -- Dehra Dun, India, 17 to 19 May 1986

These Workshops were attended by over two hundred experts from the countries of the Region, in addition to concerned professionals and representatives of international agencies. A large number of professional papers and research studies were presented and discussed in detail. With the permission of the authors, copies of papers in full will be supplied on request, with a charge to cover reproduction and postage costs.

In September 1986, ICIMOD published four summary Workshop Reports. Each is intended to represent the conclusions reached at the Workshop and does not necessarily reflect the views of ICIMOD or other participating institutions.

Copies of the reports are available upon request from :

The Publications Unit
International Centre for Integrated Mountain Development (ICIMOD)
G.P.O. Box 3226
Kathmandu
Nepal

PEOPLE AND JOBS IN THE MOUNTAINS

**Report of the
International Workshop on
Off - Farm Employment Generation in the Hindu Kush - Himalaya Region**

Continuing population growth throughout the Hindu Kush-Himalaya mountain region, particularly in the 'middle hills' where the hillside population is primarily concentrated, has created a mounting pressure on the land and on their vulnerable mountain habitats. It seems that the mountain cases an already unacceptable burden -- on traditional hillside agriculture and on their vulnerable mountain habitats. It seems that the mountain long include adequate emphasis on the systematic generation of employment -- that is the provision of job opportunities in the non-agricultural sectors off the land in urban and industrial areas. The workshop has linked directly to the support and strengthening of the mountain region.

The issues in this exceptionally complex field of mountain development were reviewed in depth at an International Workshop on this subject organised by ICIMOD and held, at the kind invitation of the Department of Environment, Forests and Wildlife of the Government of India, at the Forest Research Institute of Dehra Dun. This Workshop Report summarises the most useful exchanges of ideas and experiences among participants from most of the countries of the Hindu Kush-Himalaya Region. In light of these discussions and exchanges, ICIMOD is now in the process of formulating a systematic programme of practical research in identified priority areas for implementation on a collaborative basis with participating institutions in India, China, Nepal, Pakistan, and Bangladesh.

I would like to take this opportunity to express our sincere appreciation to the individuals and institutions that made the Workshop possible. I would especially like to thank the members of the Workshop Organising Committee in India for their valuable contributions and support. I am particularly grateful to the Department of Environment, Forests and Wildlife, Government of India, and Chairman, Dehra Dun, for their kind invitation and support. I am also grateful to the International Centre for Integrated Mountain Development (ICIMOD) for its support and to V. S. Raghunathan, Director, Forest Research Institute, Dehra Dun, for his kind invitation and support.

International Centre for Integrated Mountain Development

Kathmandu, Nepal

ICIMOD is indebted to Dr. V. S. Raghunathan, Director, Forest Research Institute, Dehra Dun, for his kind invitation and support. I would also like to express our gratitude to the authors, discussants, and participants, who brought their valuable experiences and insights to the Workshop. Many other individuals both at ICIMOD and the Forest Research Institute worked long hours in preparation for the Workshop and we express our sincere appreciation for their efforts. I must particularly thank Dr. Mahesh Bangkota and Dr. Pradip Roy for preparing the Workshop Report.

Colin Ransom
Director

Copyright©1986

International Centre for Integrated Mountain Development

All rights reserved

Cover photograph : Off-Farm Employment Generation in the Himalaya

Published by

International Centre for Integrated Mountain Development
G.P.O. Box 3226, Kathmandu Nepal

In the preparation of this report an attempt has been made to reflect the views and interpretations expressed by the participants at the Workshop. These views and interpretations are not attributable to the International Centre for Integrated Mountain Development (ICIMOD), and do not imply the expression of an opinion concerning the legal status of any country, city, or area of its authorities, or concerning the delimitation of its frontiers or boundaries.

Foreword

Continuing population growth throughout the Hindu Kush-Himalaya mountain region, particularly in the 'middle hills' where the hill communities are primarily concentrated, is clearly exerting a severe burden -- and in some cases an already unacceptable burden -- on traditional hill farming systems and on their vulnerable mountain habitats. It seems clear that any sustainable long-term strategies for the progressive development of mountain regions must include adequate emphasis on the systematic generation of off-farm employment -- that is the provision of job opportunities in the non-agricultural sectors off the land in urban and rural centres of varying scales, preferably linked directly to the support and strengthening of the rural economy.

The issues in this exceptionally complex field of mountain development were reviewed in depth at an International Workshop on this subject organised by ICIMOD and held, at the kind invitation of the Department of Environment, Forests and Wildlife of the Government of India, at the Forest Research Institute of Dehra Dun. This Workshop Report summarises the most useful exchanges of ideas and experience among participants from most of the countries of the Hindu Kush-Himalaya Region. In light of these discussions and exchanges, ICIMOD is now in the process of formulating a systematic programme of practical research in identified priority areas for implementation on a collaborative basis with participating institutions in India, China, Nepal, Pakistan, and Bangladesh.

I would like to take this opportunity to express our sincere appreciation to all individuals and institutions contributing to this Workshop. I would especially like to thank the members of the Workshop Organising Committee in India for their valuable time and assistance : T. N. Seshan, Secretary, Department of Environment, Government of India, ICIMOD Board Member and Chairman, Programme Advisory Committee; Dr. Bhupinder Singh, Additional Secretary, Planning Commission, Government of India; and Dr. R. V. Singh, President, Forest Research Institute and Colleges, Dehra Dun, India.

ICIMOD is indebted to Dr. R. V. Singh and his staff for so graciously hosting the Workshop on the historic premises of the Forest Research Institute. I would also like to express our gratitude to the authors, discussants, and participants, who brought their valuable experiences and insights to the Workshop. Many other individuals both at ICIMOD and the Forest Research Institute worked long hours in preparation for the Workshop and we express our sincere appreciation for their efforts. I must particularly thank Dr. Mahesh Banskota and Dr. Prodipto Roy for preparing the Workshop Report.

Colin Rosser
Director

Contents

	Page
Foreword	i
INTRODUCTION	1
BACKGROUND TO THE WORKSHOP	3
Population Growth in the Hills	3
Pressures on Land - Based Resources	4
Integrated Mountain Development and Off - Farm Employment Generation	4
Review of Off-Farm Employment Issues	5
THE WORKSHOP	8
Major Off - Farm Activities in the Hills	8
Inter - Sectoral and Spatial Linkages	11
Human Resource Development	14
Policies and Programmes	16
COLLABORATIVE RESEARCH PRIORITIES	18
ANNEXES	
1. Workshop Programme	21
2. Summaries of Background Papers	25
3. Participants	39