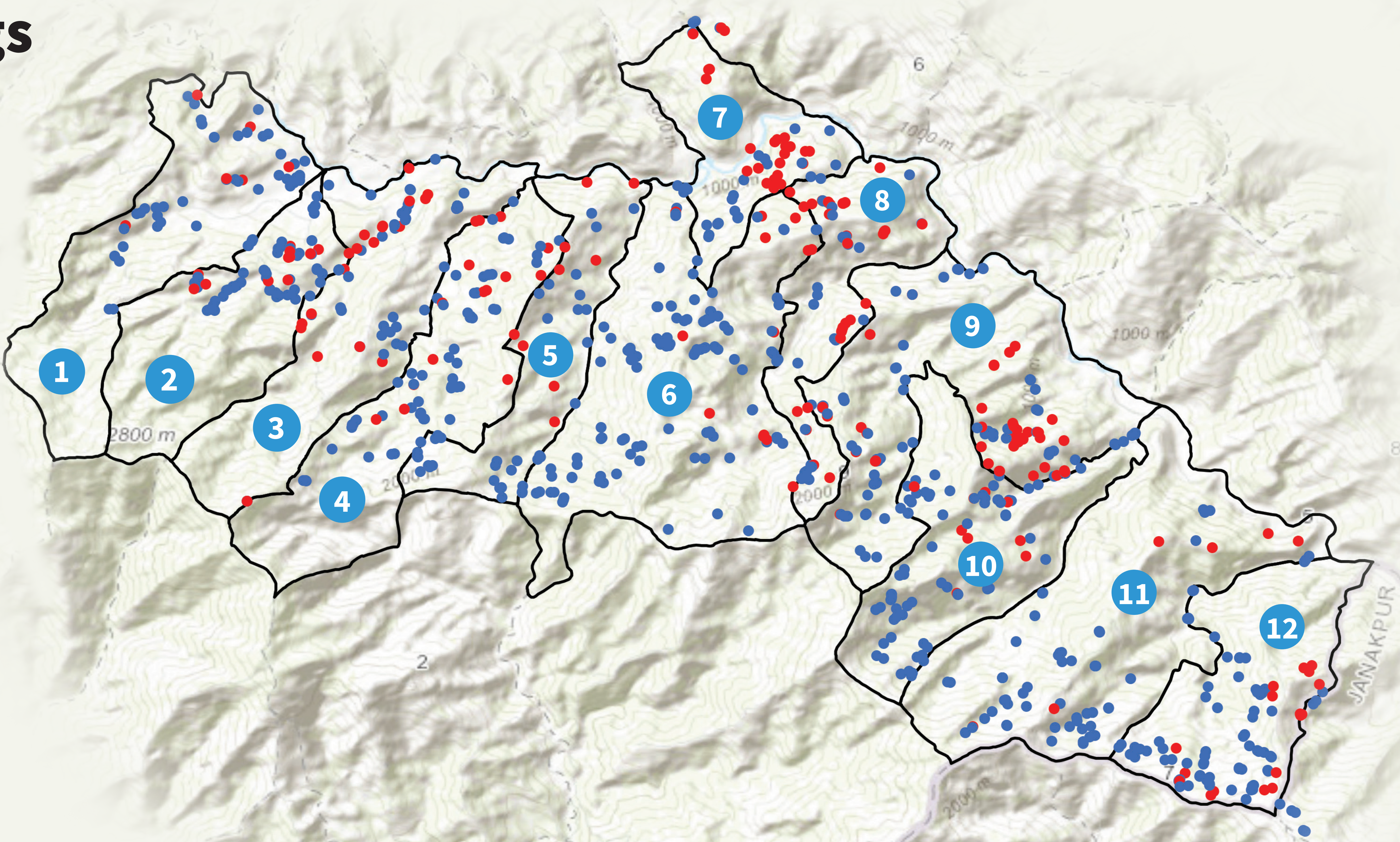


Status of springs in Roshi Rural Municipality

Springs are a lifeline for mountain communities. This map is the result of a collaborative survey by Roshi Rural Municipality and ICIMOD, with the help of 24 community resource persons from 12 wards, as part of our effort to create a database of springs for the Municipality.

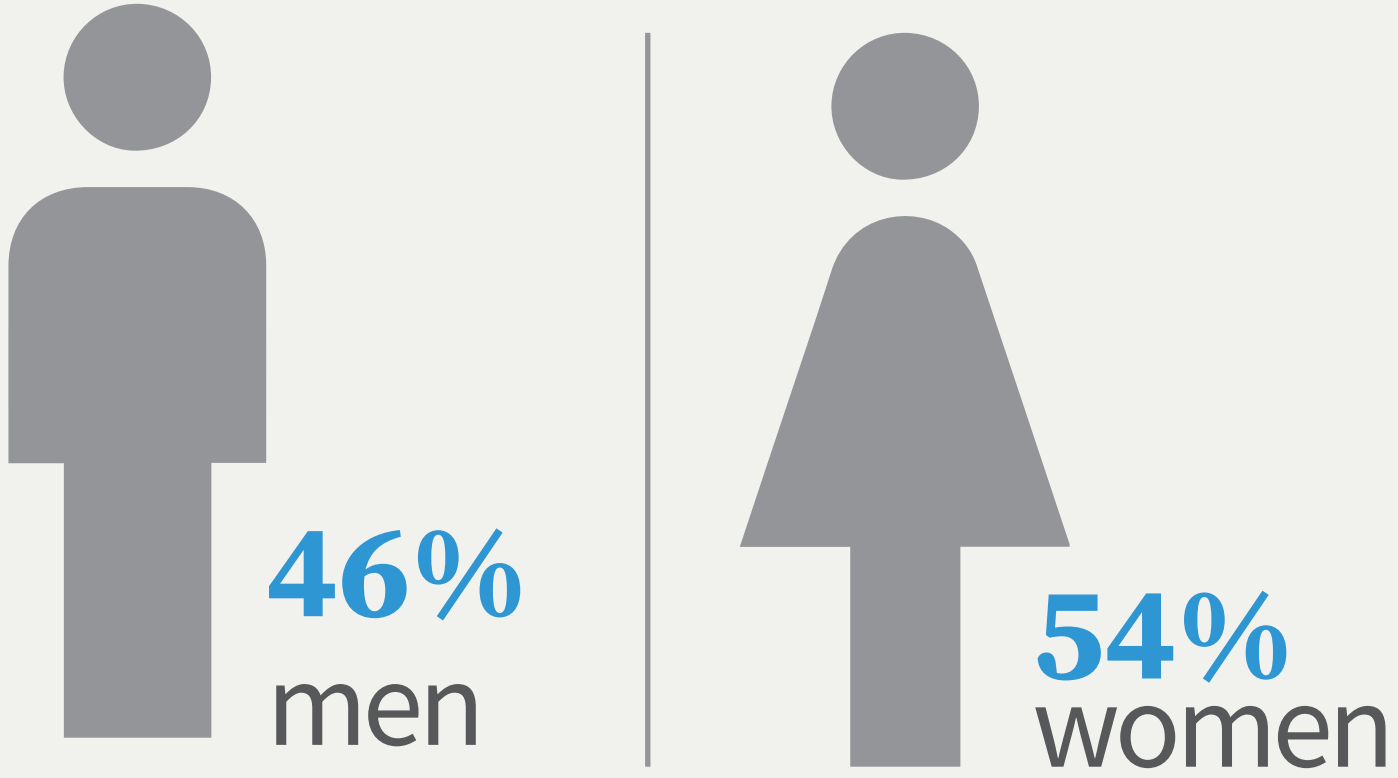
- Active sources
- Dried sources
- Ward
- Roshi Rural Municipality



Total number of wards **12**

Community resource persons trained

24 > 2 from each ward

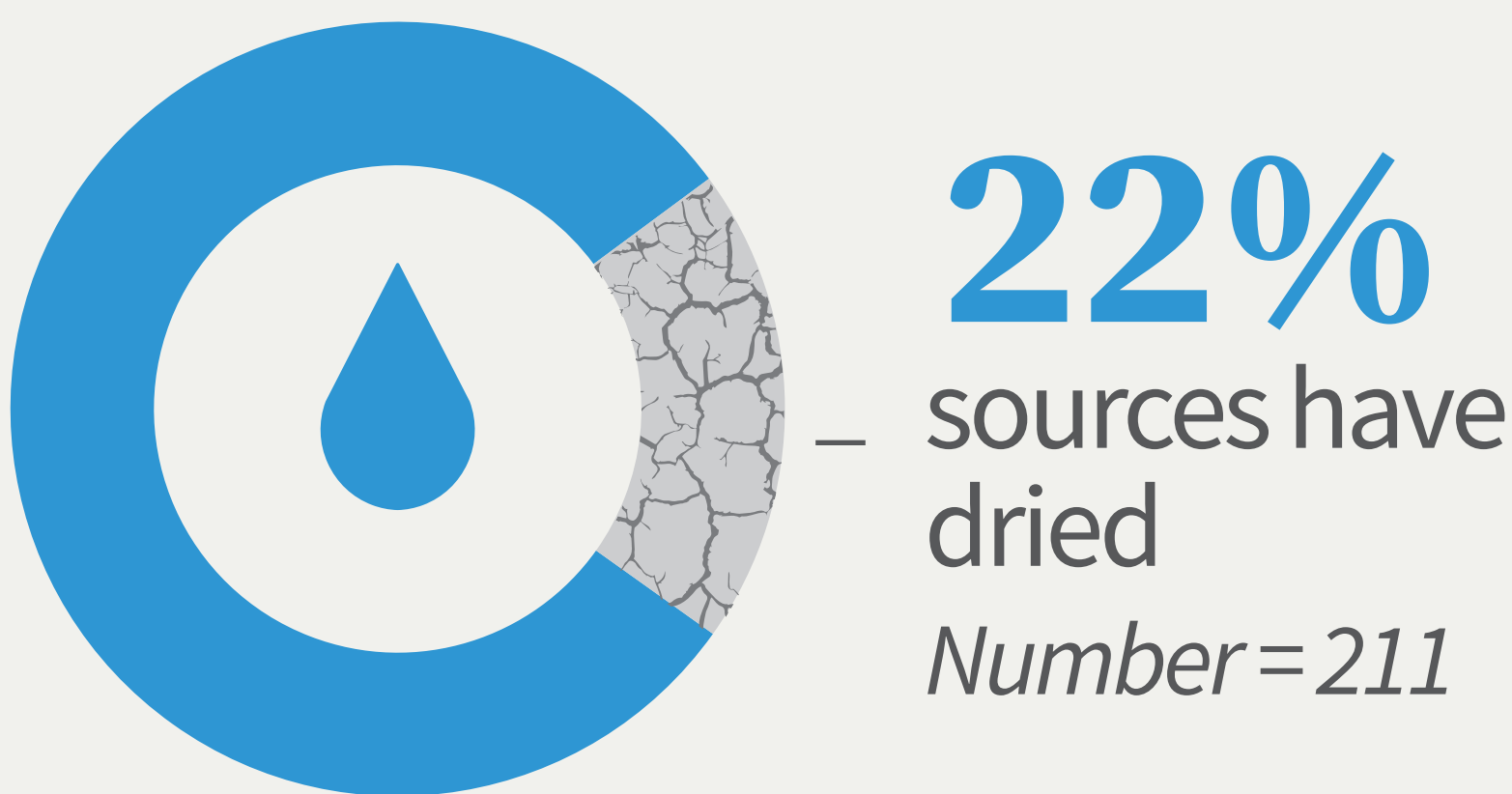


Total water sources mapped **969**

Source status

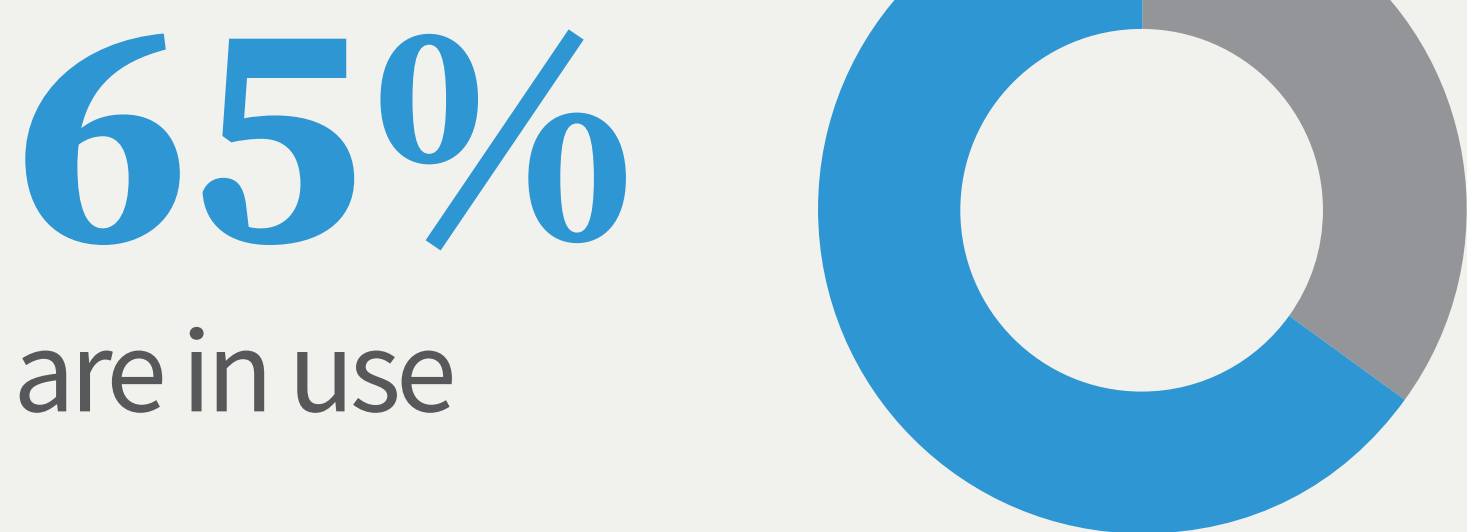
Number of springs **923**

Number of ponds **46**



Number of active sources **758**

Among the active sources



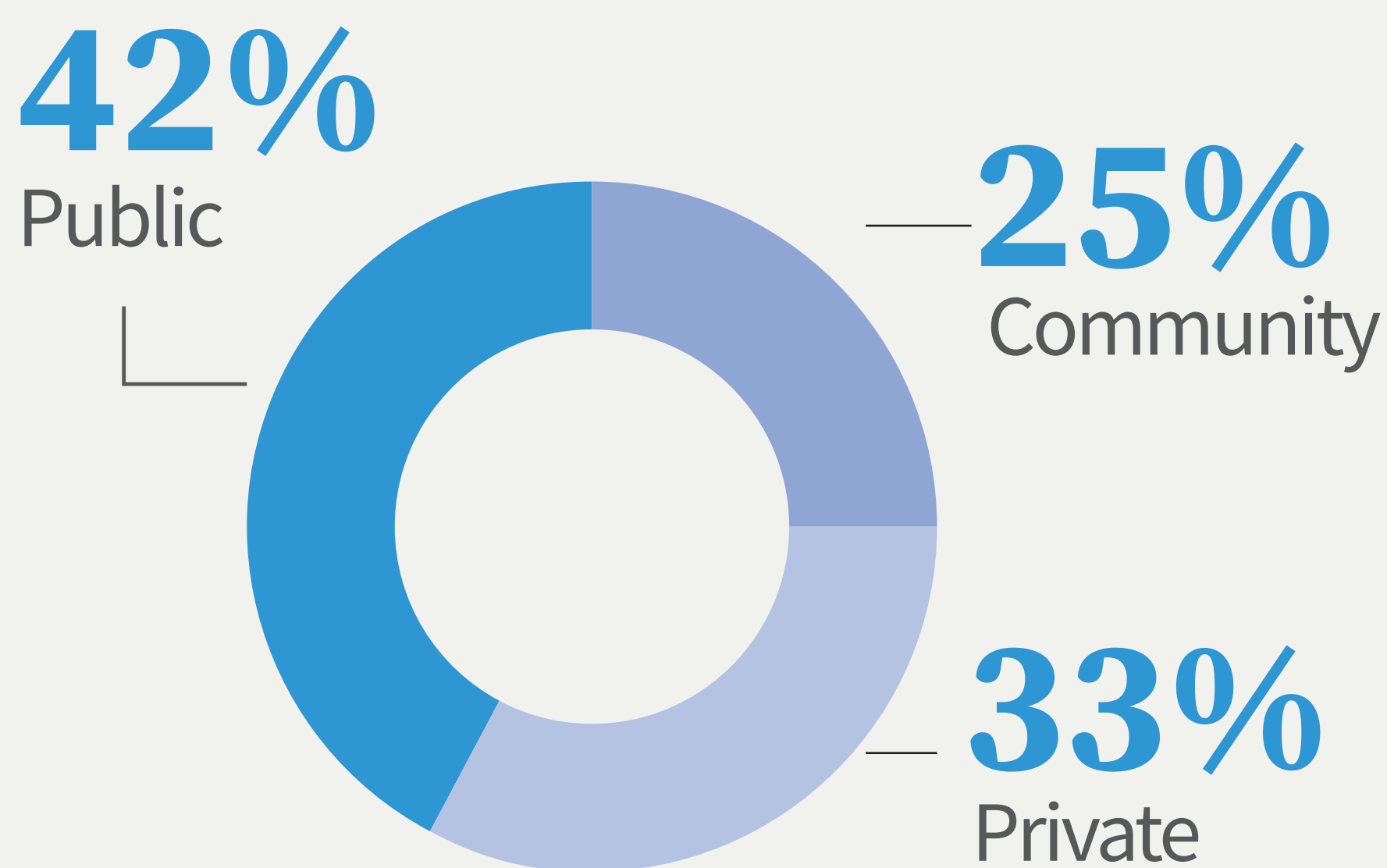
Among the active sources

54% are tapped for water supply

Among the active sources

2% sources have religious/cultural significance
(Naag puja, Kul puja, Bandeviko puja, Kriyakarma)

Source ownership



Spring density

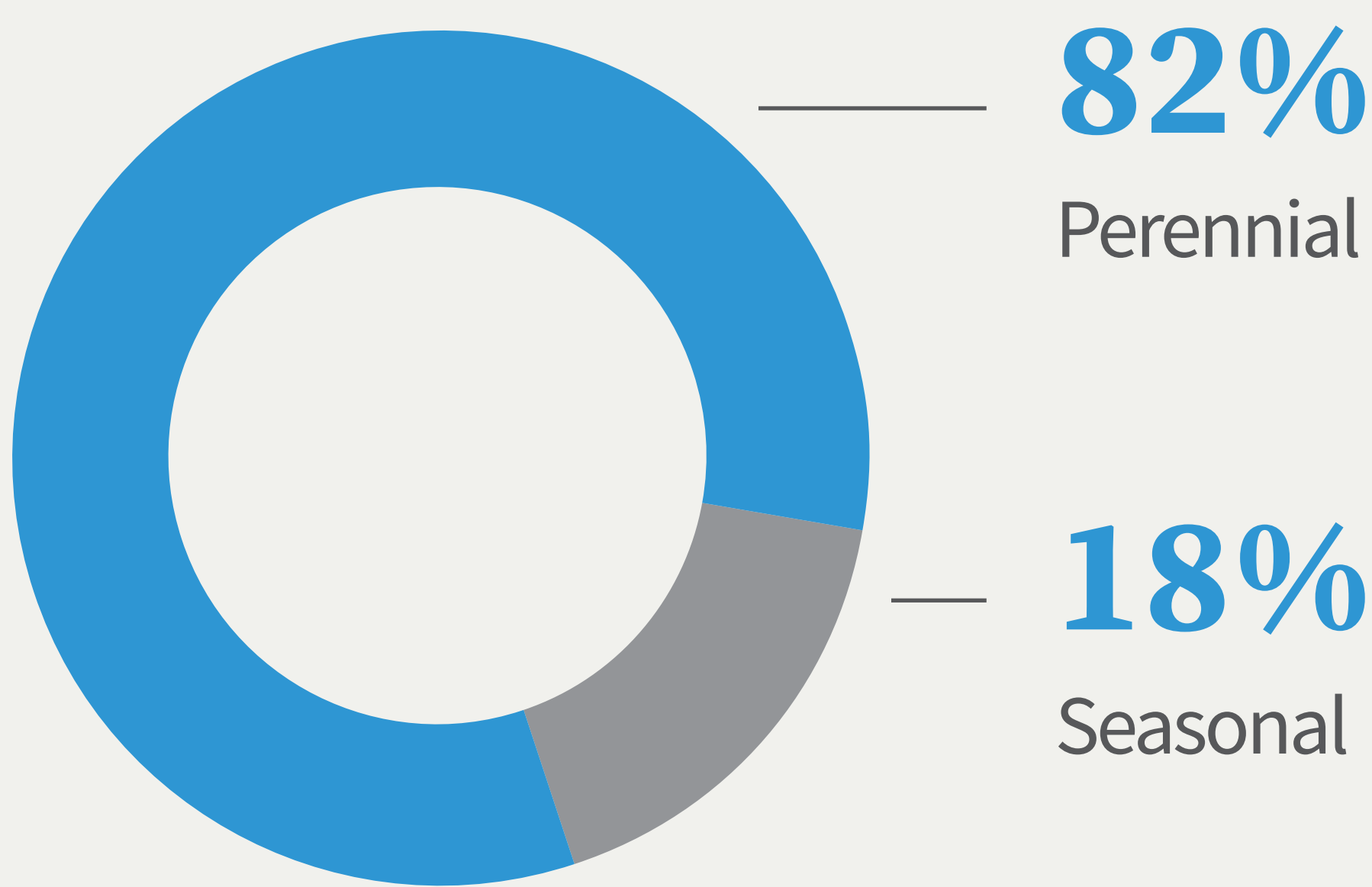


Average source dependency

Pond dependence **15** Households per pond

Spring dependence **17** Households per spring

Seasonality of spring sources



Flow trend (Community perception)

62% decreasing flows of springs

Total households (HH) in Bethanchowk Rural Municipality

6,075 (CBS, 2021)

Sources with management committees

104

Types of management committed

77 Formal | **27** Informal

Women in leadership positions

