

Landscape Initiative for the Far Eastern Himalaya

Bringing stakeholders together for improved management of shared environments and natural resources

HI-LIFE connects communities across a shared landscape spanning western Yunnan in China, northeastern India, and northern Myanmar to identify shared benefits and work towards effective policy development and management.

We bring local, national, and regional actors together to collaborate on sustainable development projects with a focus on conservation and adaptation in the context of global climate change.

Regional cooperation is key to ensuring that development and conservation objectives are aligned to benefit vulnerable communities fighting poverty, climate change, and natural disasters, as well as biodiversity threatened by poaching and illegal wildlife trade, unregulated extraction and trade of medicinal plants, habitat fragmentation, invasive alien species, and climate-related changes.

Our focus

Promote harmonized landscape conservation and development tools

Generate and disseminate landscape-level scientific data and information

Facilitate policy dialogue, and support policy changes and experiments

Strengthen regional partnerships and cooperation

Promote innovative approaches, technologies, and practices for sustainable livelihood and ecosystem management

Key features of the landscape

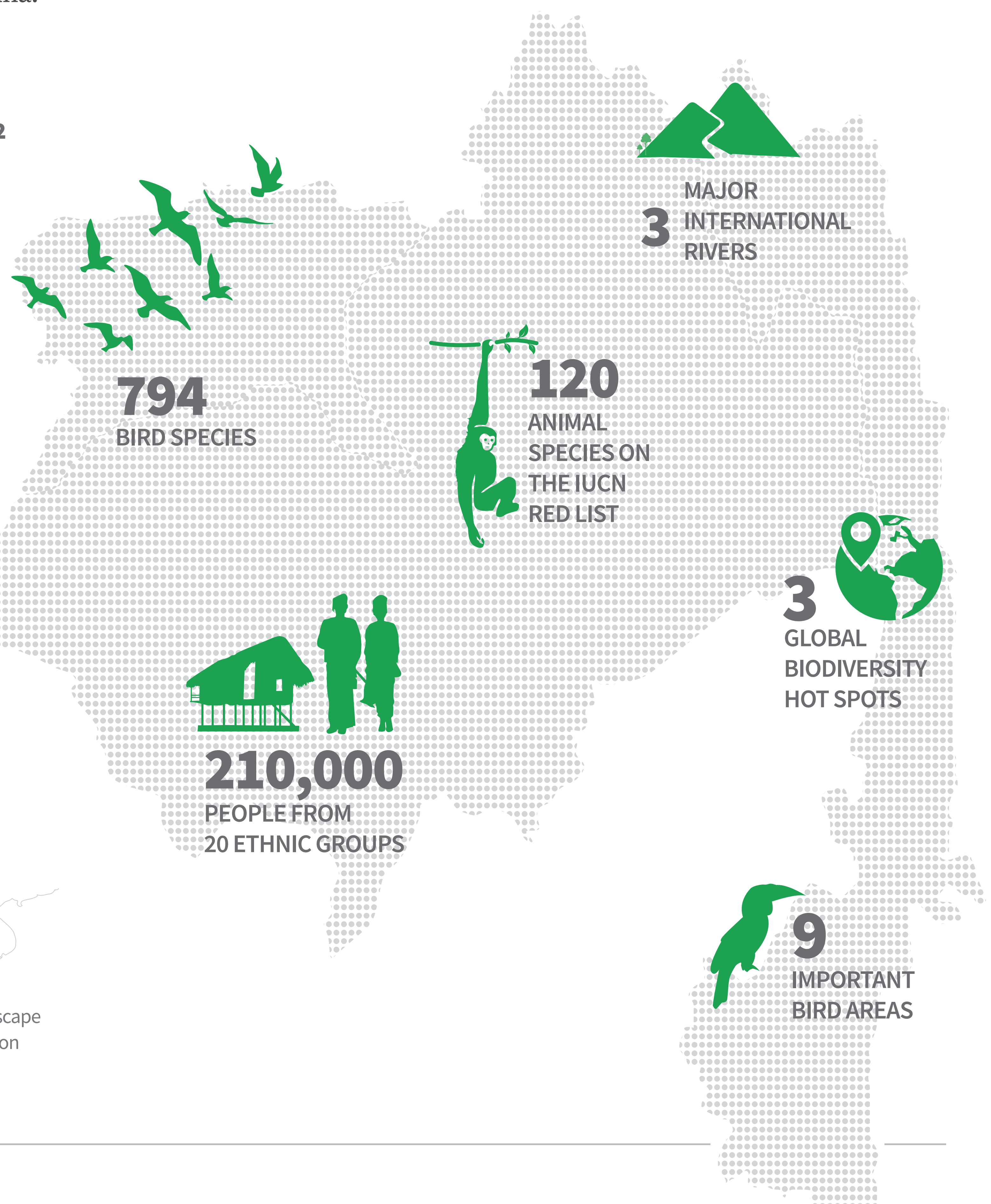
The Far Eastern Himalaya connects three global biodiversity hotspots and is home to eight ecoregions and nine important bird areas. The rivers that originate and pass through the landscape – the Irrawaddy, the Salween, and tributaries of the Brahmaputra – provide ecosystem services to communities that live far beyond its borders. The landscape, with 80% forest cover, is home to many species of rare, endemic and threatened flora and fauna.

TOTAL AREA

71,452 km²



MYANMAR
INDIA
CHINA



Our vision

A biodiversity-rich landscape whose inhabitants enjoy improved well-being and healthy ecosystems

Our mission

To ensure development projects benefit the people and protect the shared environments of the landscape

Our goal

Landscape-wide conservation and ecosystem management for strengthened livelihoods, economic development, and social-ecological resilience