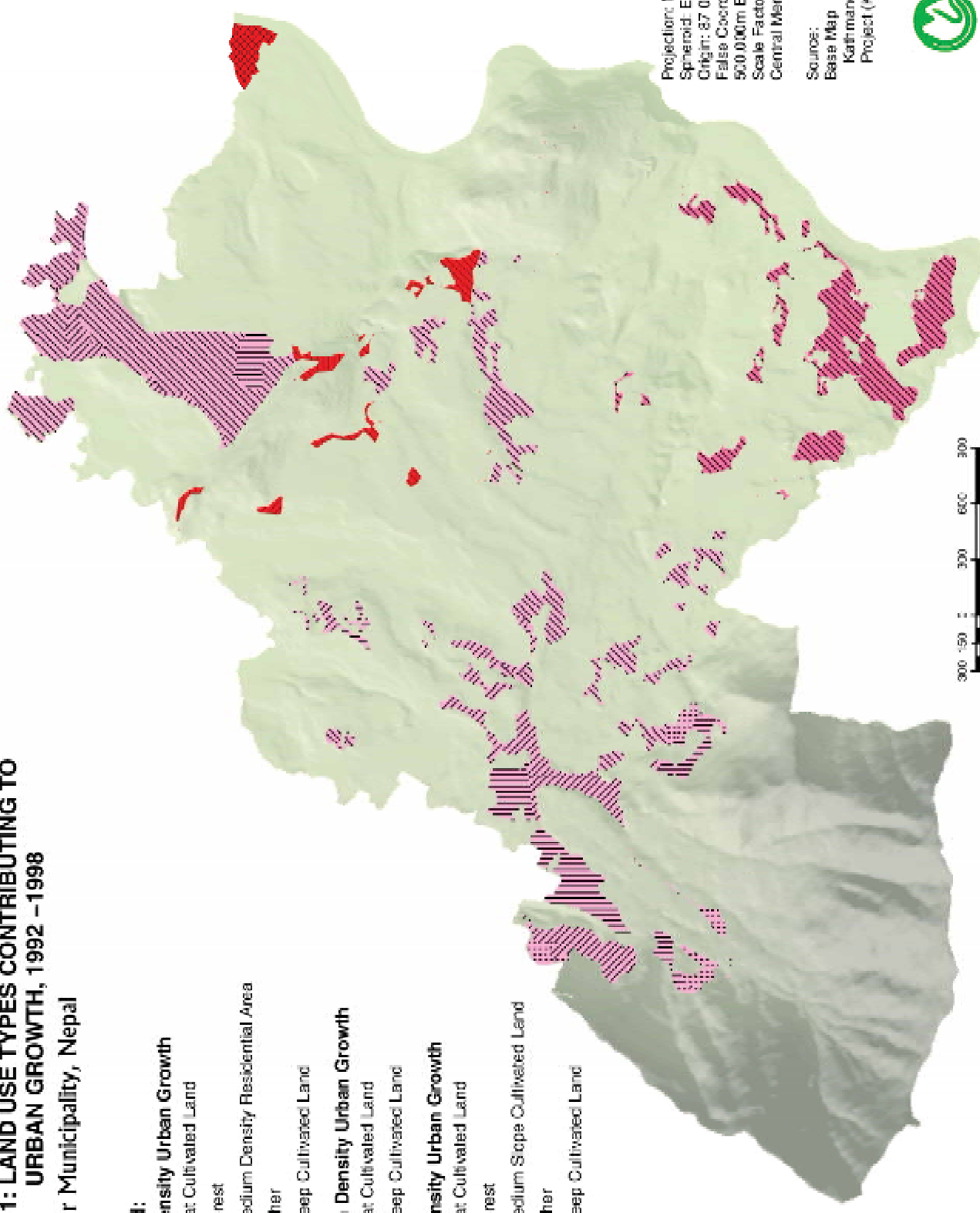
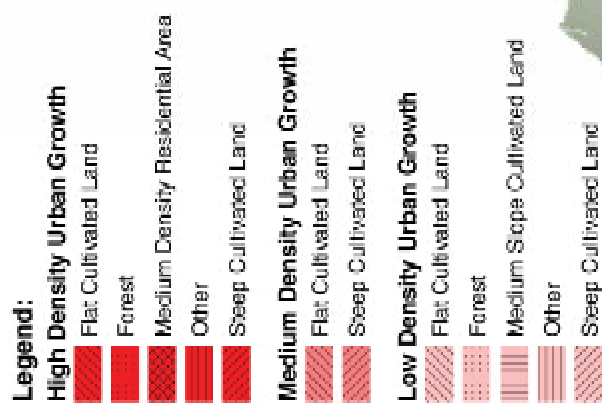


**MAP 21: LAND USE TYPES CONTRIBUTING TO
URBAN GROWTH, 1992 –1998**
Kirtipur Municipality, Nepal



Projection: Modified UTM
Spheroid: Everest 1830
Origin: 87 00 00 E, 00 00 00 N
False Coordinates of Origin:
500 000m E, 0m N
Scale Factor at
Central Meridian: 0.9999

Sources:
Base Map
Kathmandu Urban Development
Project (KUDP, 1998), Scale 1:20,000



**MAP 22: LAND USE TYPES CONTRIBUTING TO URBAN GROWTH
WITHIN 100 METRES OF MAJOR ROADS (SURFACED AND
GRAVEL), 1992-1998**

Kirtipur Municipality, Nepal

Legend:

High Density Urban Growth

- Flat Cultivated Land
- Forest
- Medium Density Residential Area
- Other
- Steep Cultivated Land

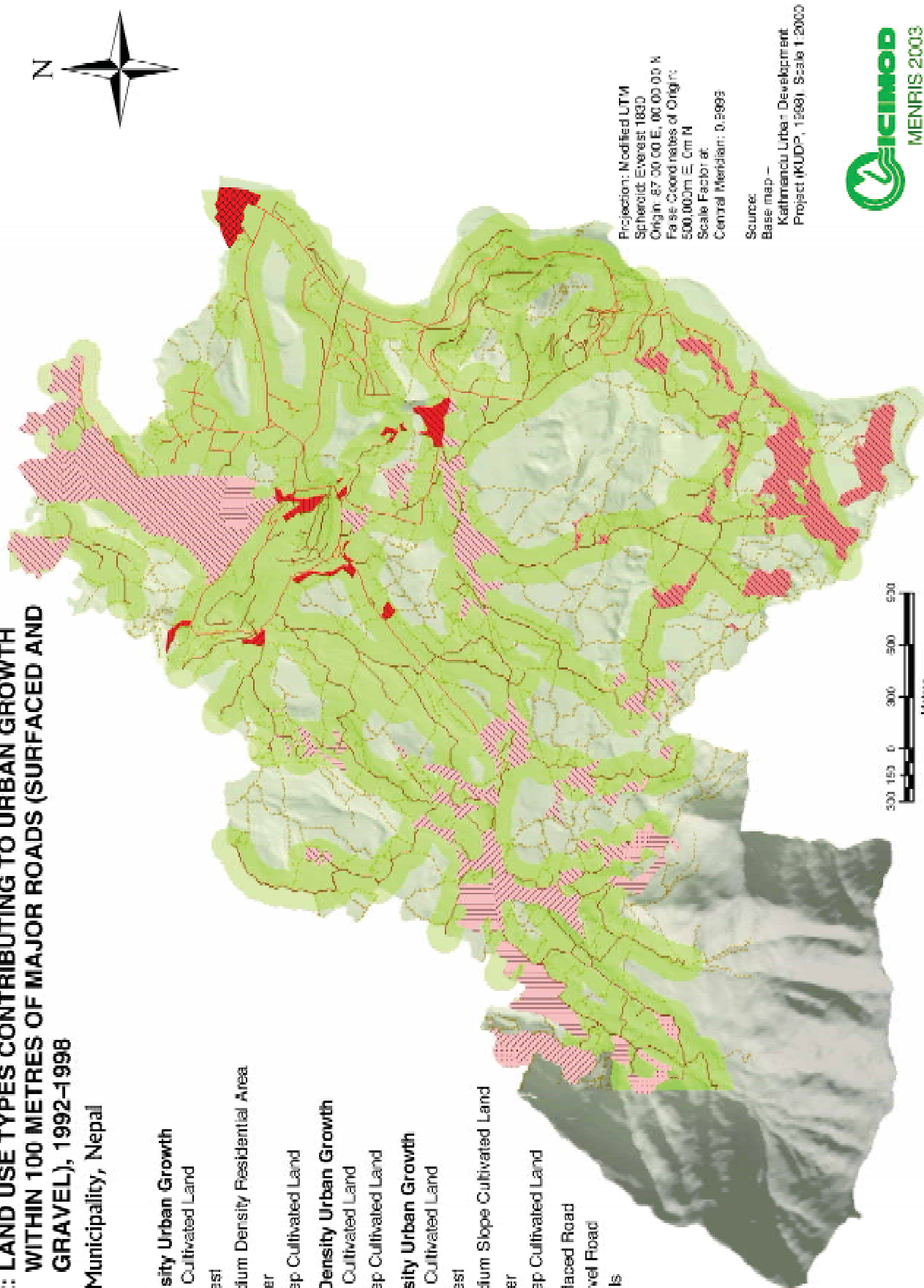
Medium Density Urban Growth

- Flat Cultivated Land
- Steep Cultivated Land

Low Density Urban Growth

- Flat Cultivated Land
- Forest
- Medium Slope Cultivated Land
- Other
- Steep Cultivated Land

- Surfaced Road
- Gravel Road
- Trails



MAP 23: POSSIBLE AREAS OF FUTURE URBAN EXPANSION

Kirtipur Municipality, Nepal

Legend:

Possible Future Expansion

Low and Medium Density to High Density Residential

Flat Cultivated Land to Residential

Medium Slope Cultivated Land to Residential

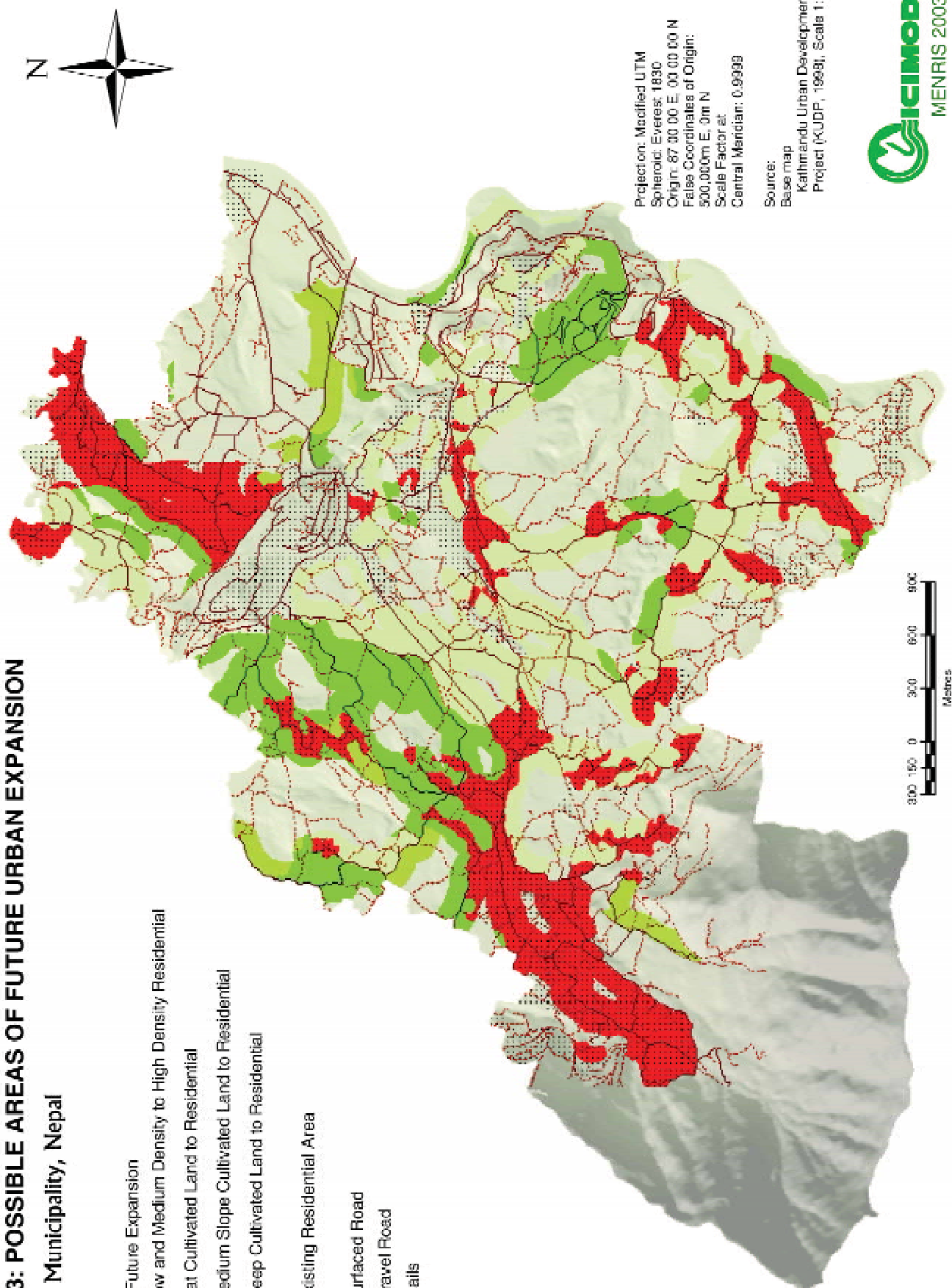
Steep Cultivated Land to Residential

Existing Residential Area

Surfaced Road

Gravel Road

Trails



Projection: Modified UTM
Spheroid: Everest, 1830
Origin: 87 00 00 E, 00 00 00 N
False Coordinates of Origin:
500,000m E, 0m N
Scale Factor: 1
Central Meridian: 0.9999

Source:

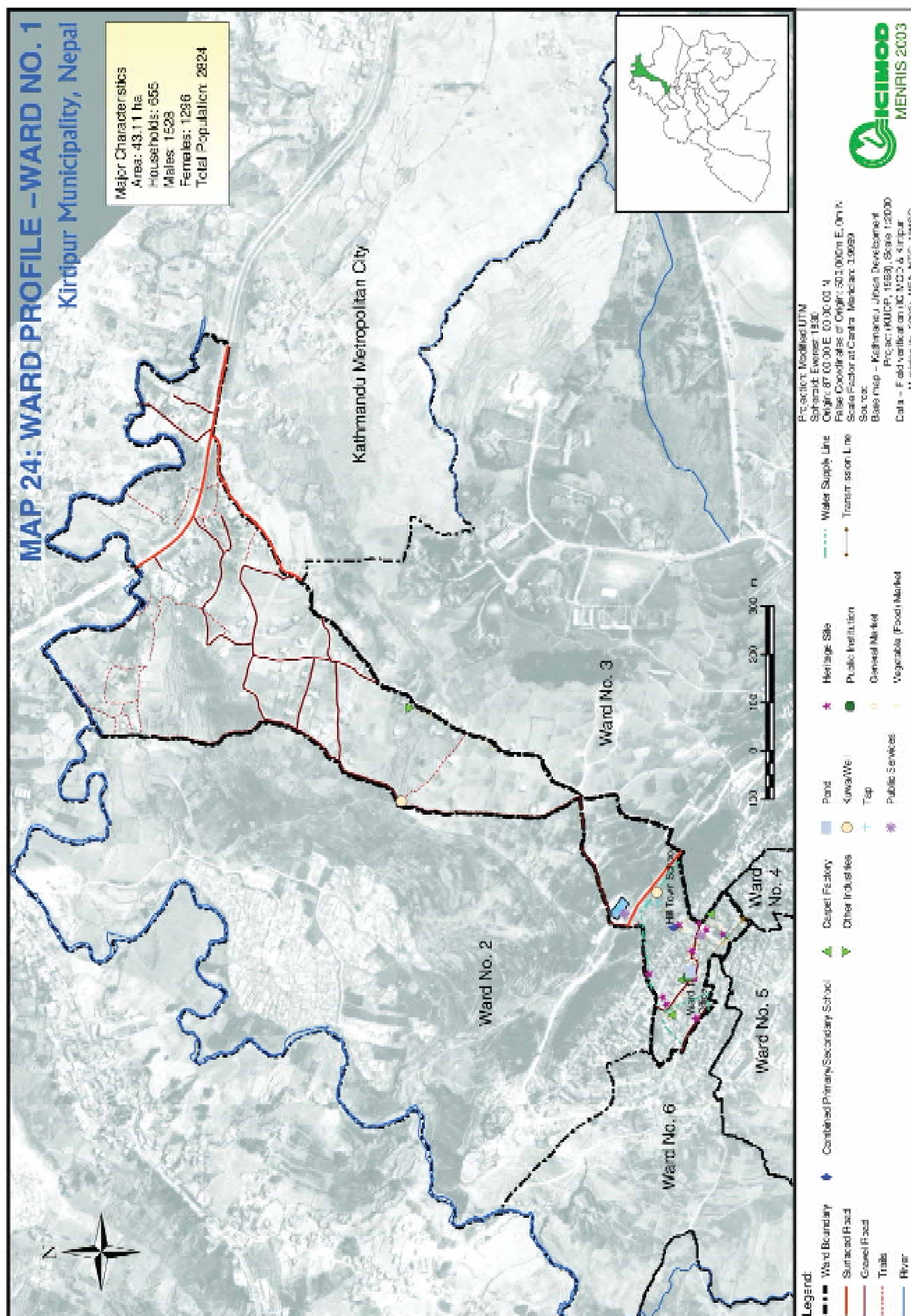
Base map

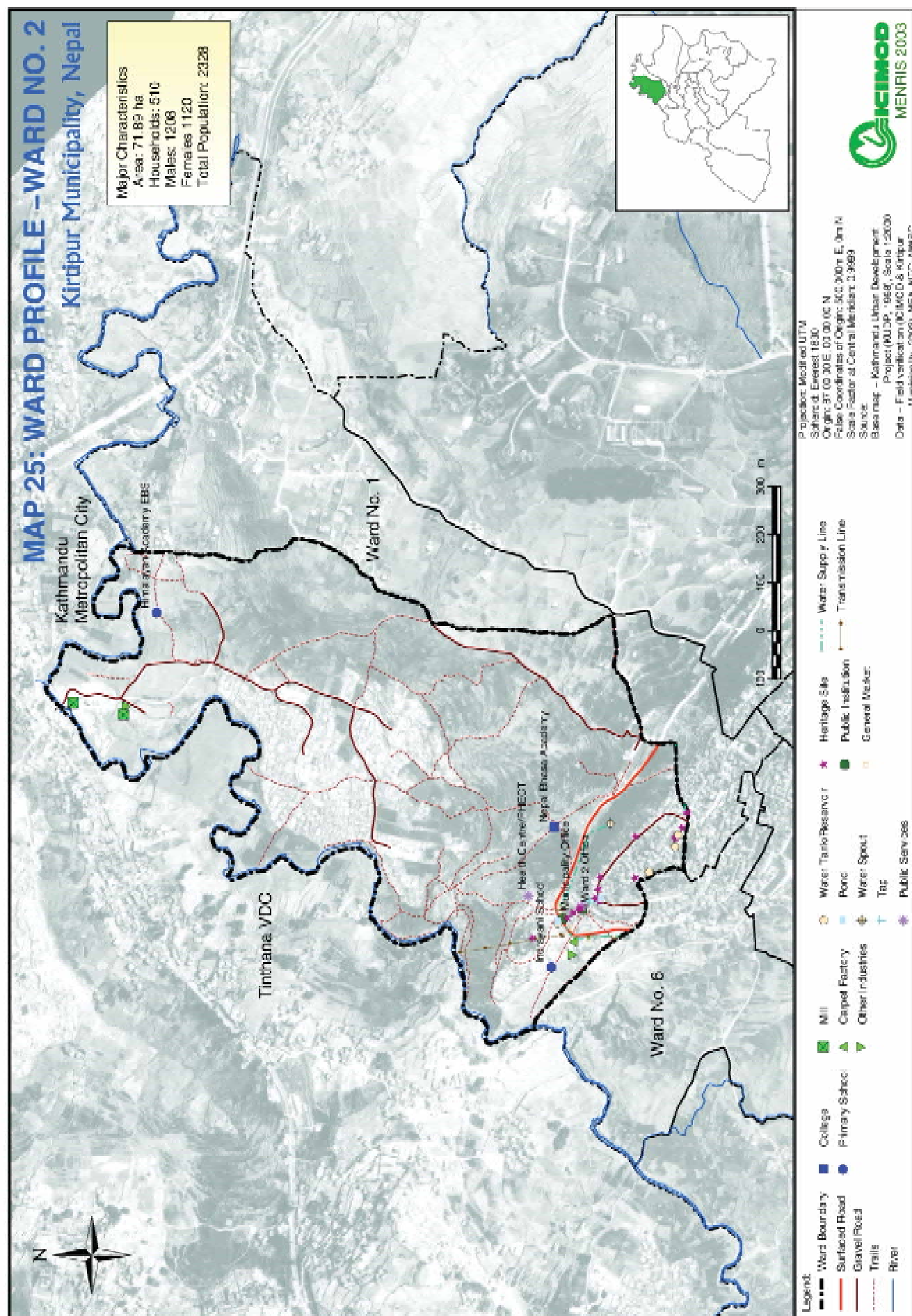
Kathmandu Urban Development

Project (KUDP), 1999, Scale 1:2000



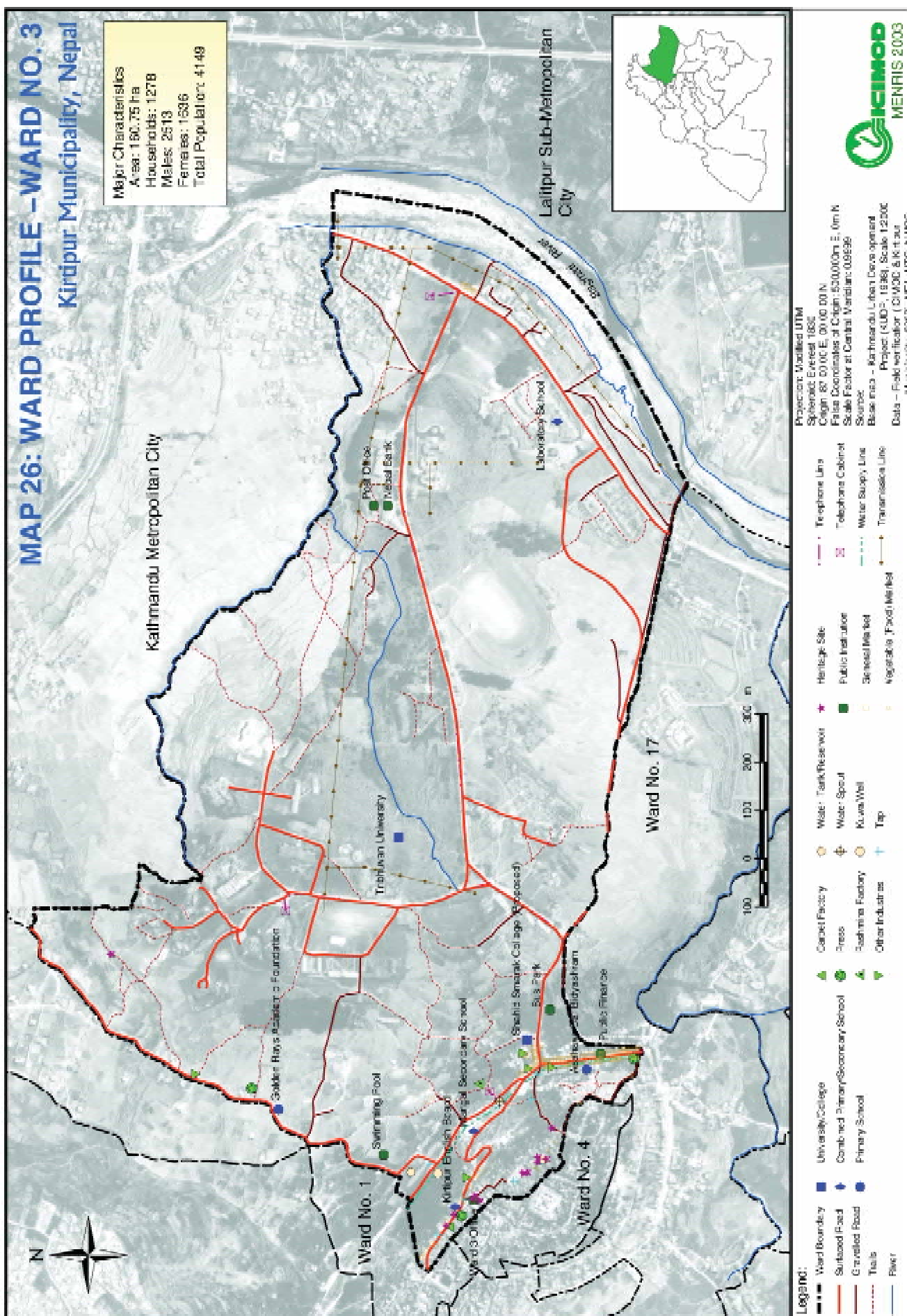
MENRIS 2003





MAP 26: WARD PROFILE –WARD NO. 3 Kirtipur Municipality, Nepal

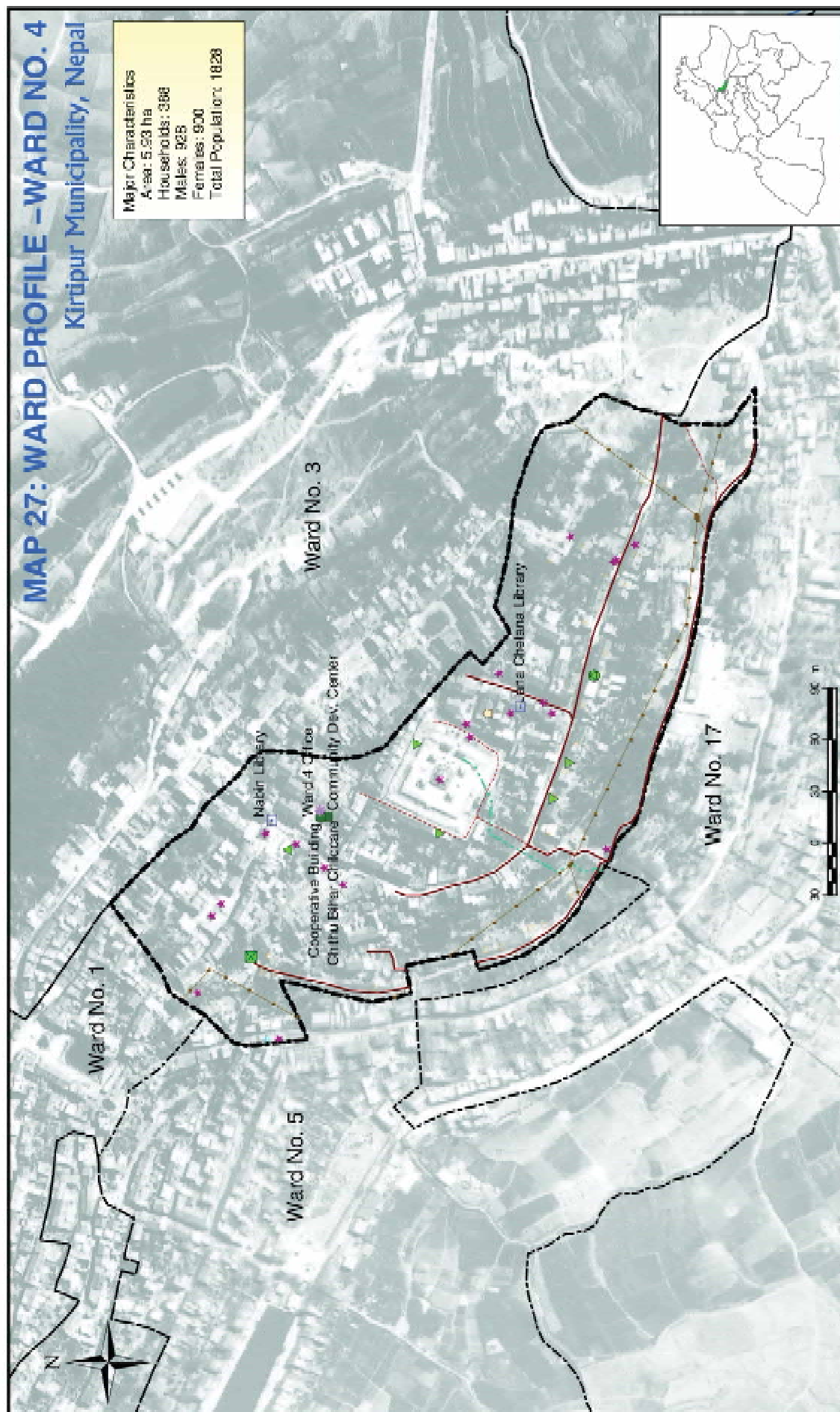
Major Characteristics
Area: 180.75 ha
Households: 1278
Males: 2513
Females: 1536
Total Population: 4149



MAP 27: WARD PROFILE – WARD NO. 4

Kirtipur Municipality, Nepal

Major Characteristics
Area: 5.33 ha
Households: 388
Males: 928
Females: 900
Total Population: 1828



Projected on: Modified UTM
Spheroid: Everest 1880
Datum: 85 5010 E, 00 00 30 N
False Coordinates of Origin: 500000m E, 0m N
Scale Factor at Central Meridian: 0.9996
Source:
Base map – Kathmandu Urban Development
Project (KUDP, 1996), Scale 1:200
Data – Field verification (CIMOD & Kirtipur
Municipality, 2023), h.E.S., NTC, MWSC

- Legend**
- Ward Boundary
 - Gravel Road
 - Trails
 - Flow
 - Primary School
 - Library
 - Mill
 - Carpet Factory
 - Press
 - Other Industries
 - Water Tank/Reservoir
 - Tap
 - Public Services
 - Heritage Site
 - Public Institution
 - General Market
 - Vegetable (Food) Market
 - Water Supply Line
 - Transmission Line



