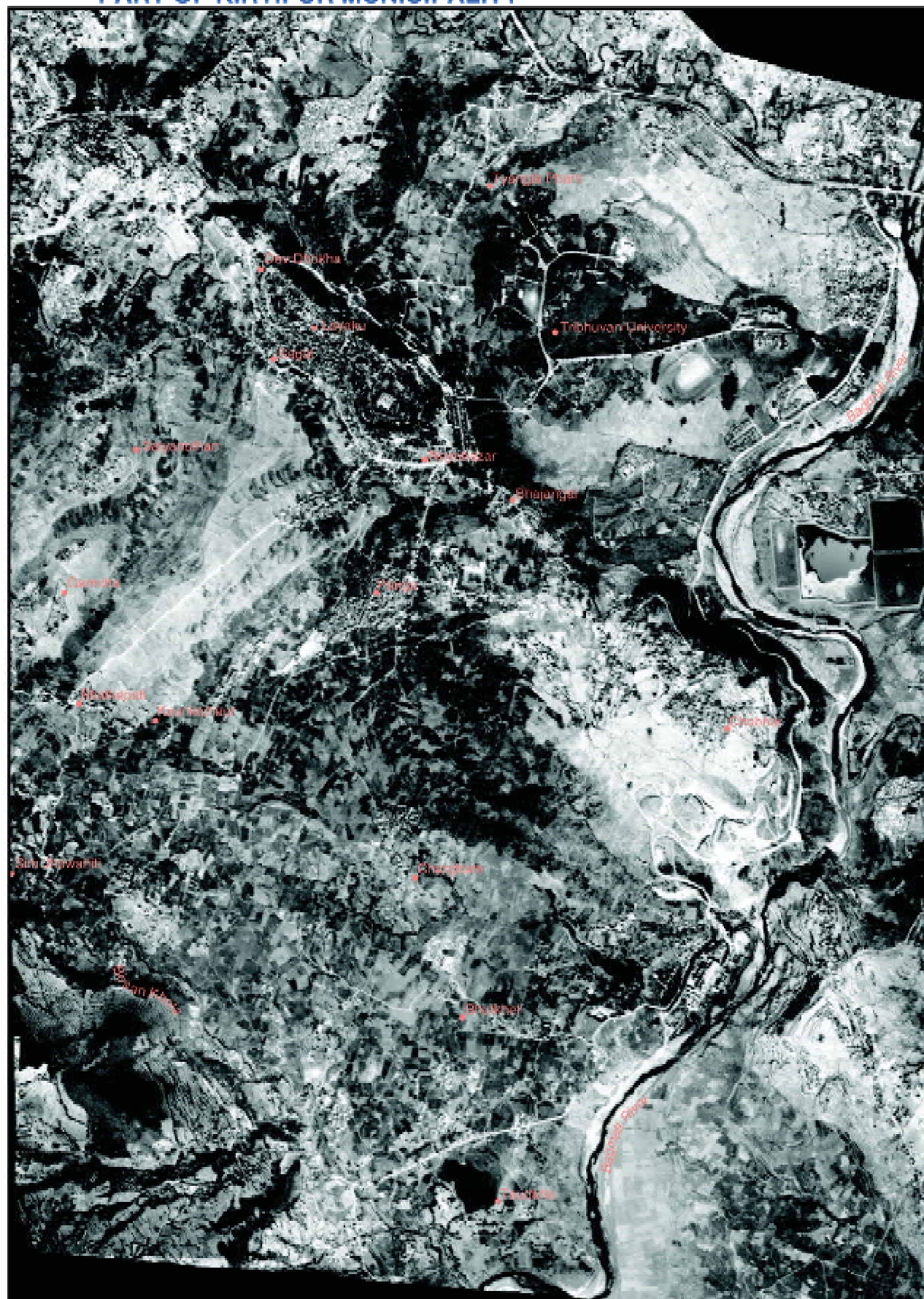


MAP 1: ORTHORECTIFIED AERIAL PHOTO FOR PART OF KIRTIPUR MUNICIPALITY

Acquisition Date: 18 March 1992



Projection: Modified UTM
Spheroid: Everest 1830
Origin: 87 00 00 E, 00 00 00 N
False Coordinates of Origin: 500,000m E, 0m N
Scale Factor at Central Meridian: 0.9999

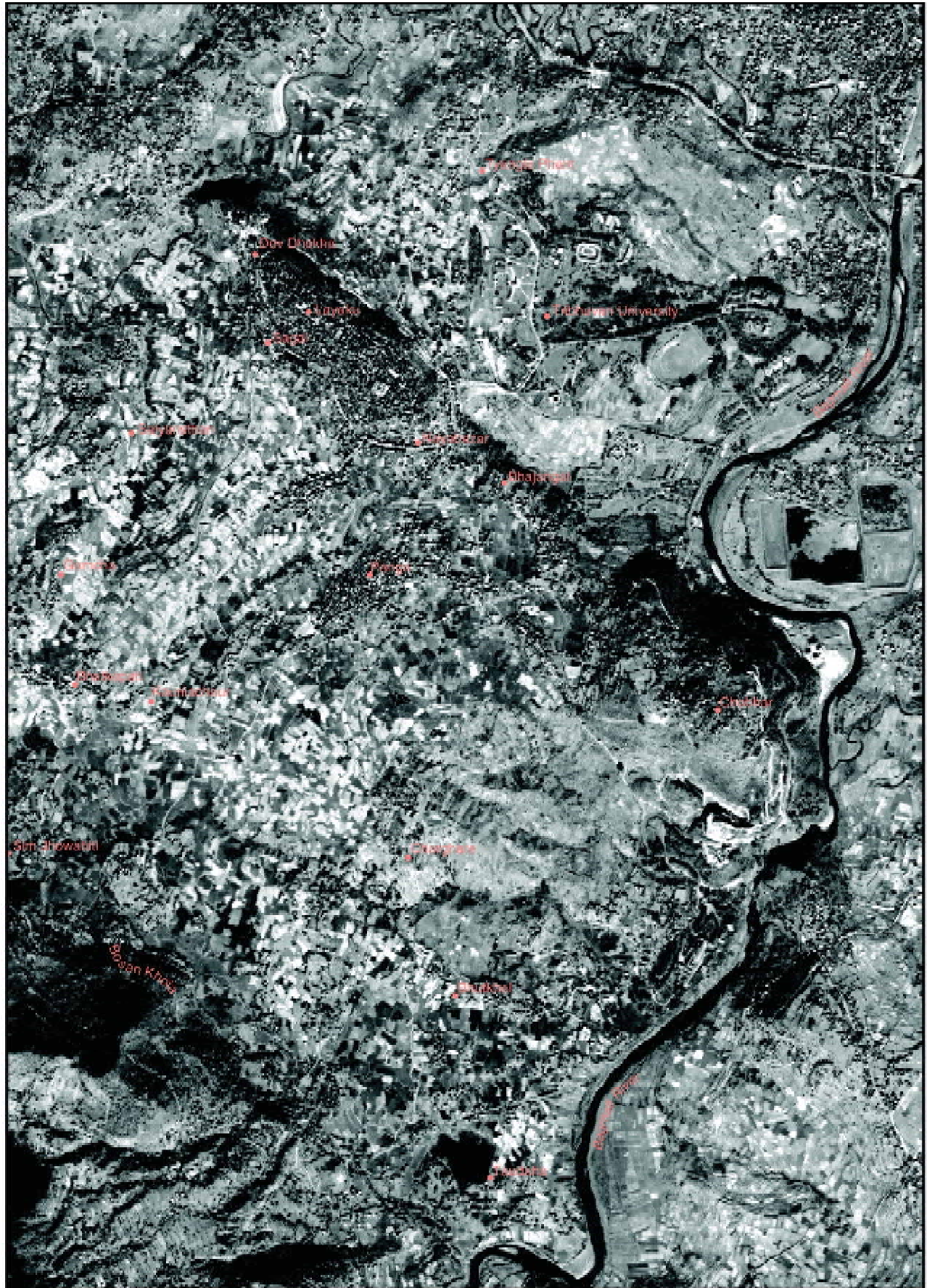


200 100 0 200 400 600 Metres



MAP 2: IKONOS SATELLITE IMAGE FOR PART OF KIRTI PUR MUNICIPALITY

Acquisition Date: 10 November 2001



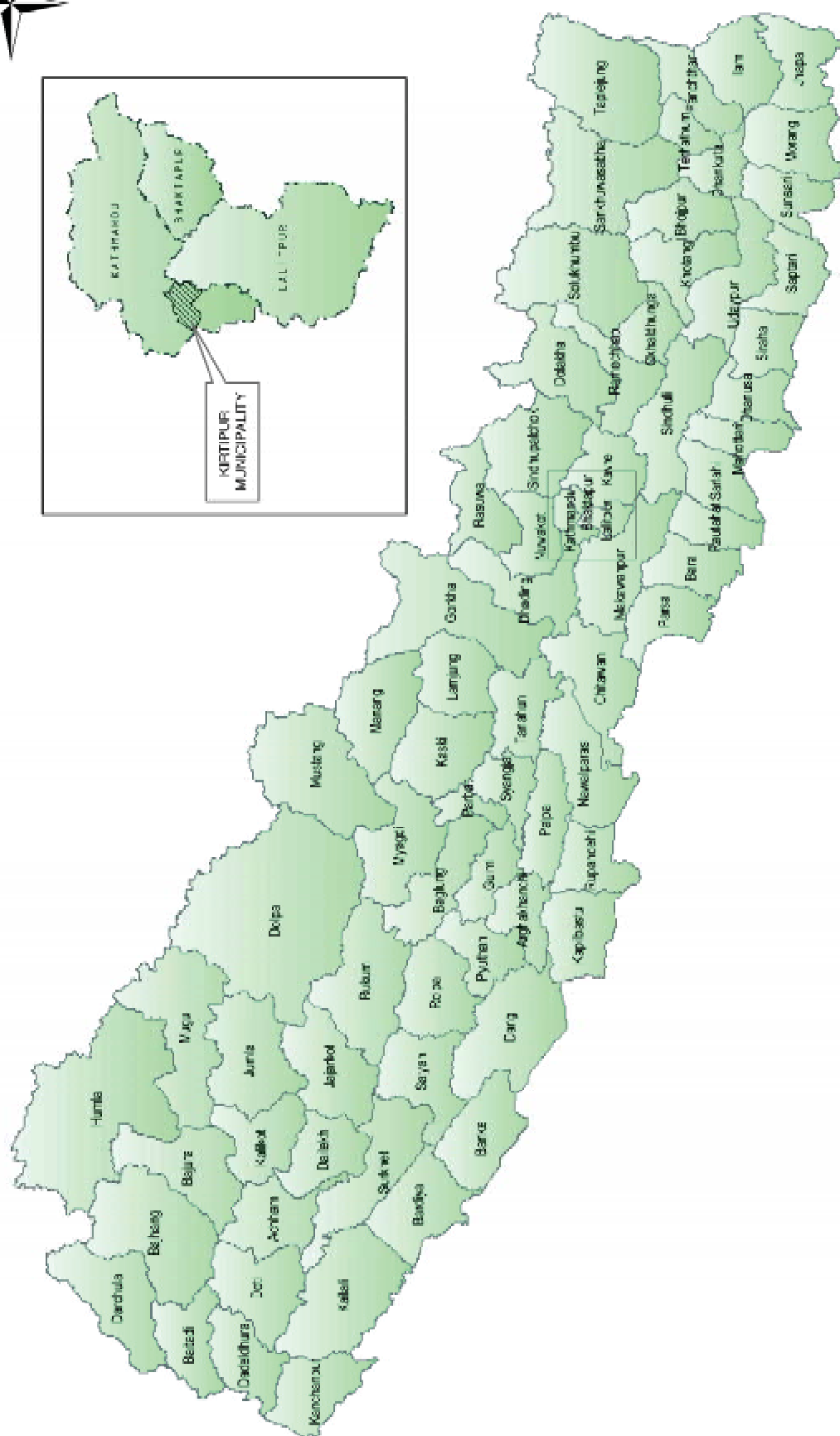
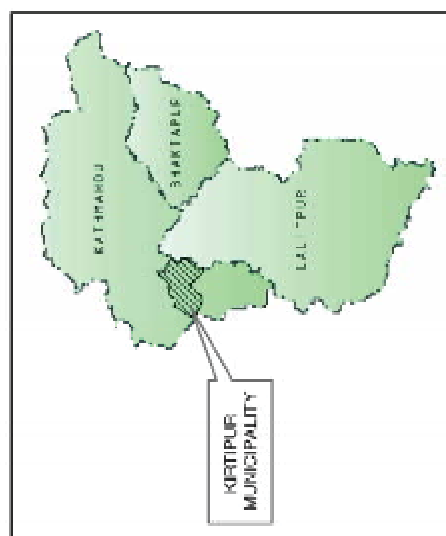
Projection: Modified UTM
Spheroid: Everest 1830
Origin: 47 00 00 E, 00 00 00 N
False Coordinates of Origin: 500,000m E, 0m N
Scale Factor at Central Meridian: 0.9999



200 100 0 200 400 600 Metres



Kirtipur Municipality, Nepal



Source:
Base map of Nepal
Topographical Zonal Map, Scale 1:250,000
Department of Survey, 1988



Kirtipur Municipality, Nepal

 Municipal Boundary

River

1 Ward Number

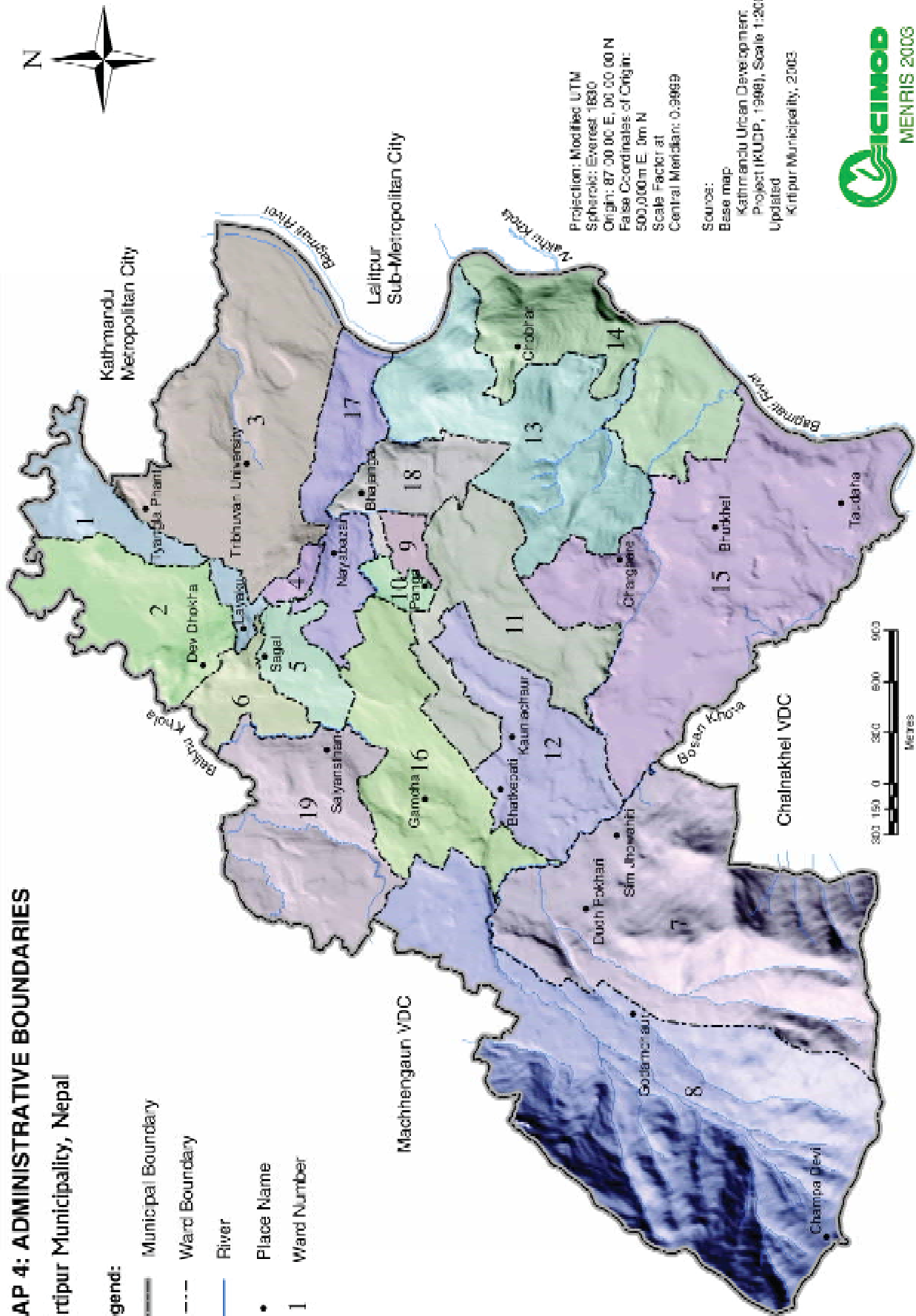
Machhengaun VDC

Kathmandu
Metropolitan City

Lalitpur
Sub-Metropolitan City

Projection: Modified UTM
Spheroid: Everest 1830
Origin: 87 00 00 E, 00 00 00 N
False Coordinates of Origin:
500,000 m E, 0 m N
Scale Factor at
Central Meridian: 0.9999

Source:
Base map
Kathmandu Urban Development
Project (KUDP, 1998), Scale 1:2000
Updated
Kirtipur Municipality, 2003

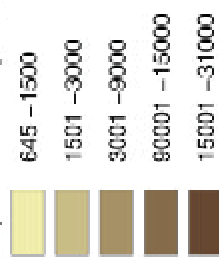


MAP 5: POPULATION DISTRIBUTION, 2001

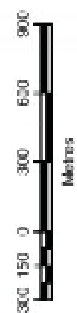
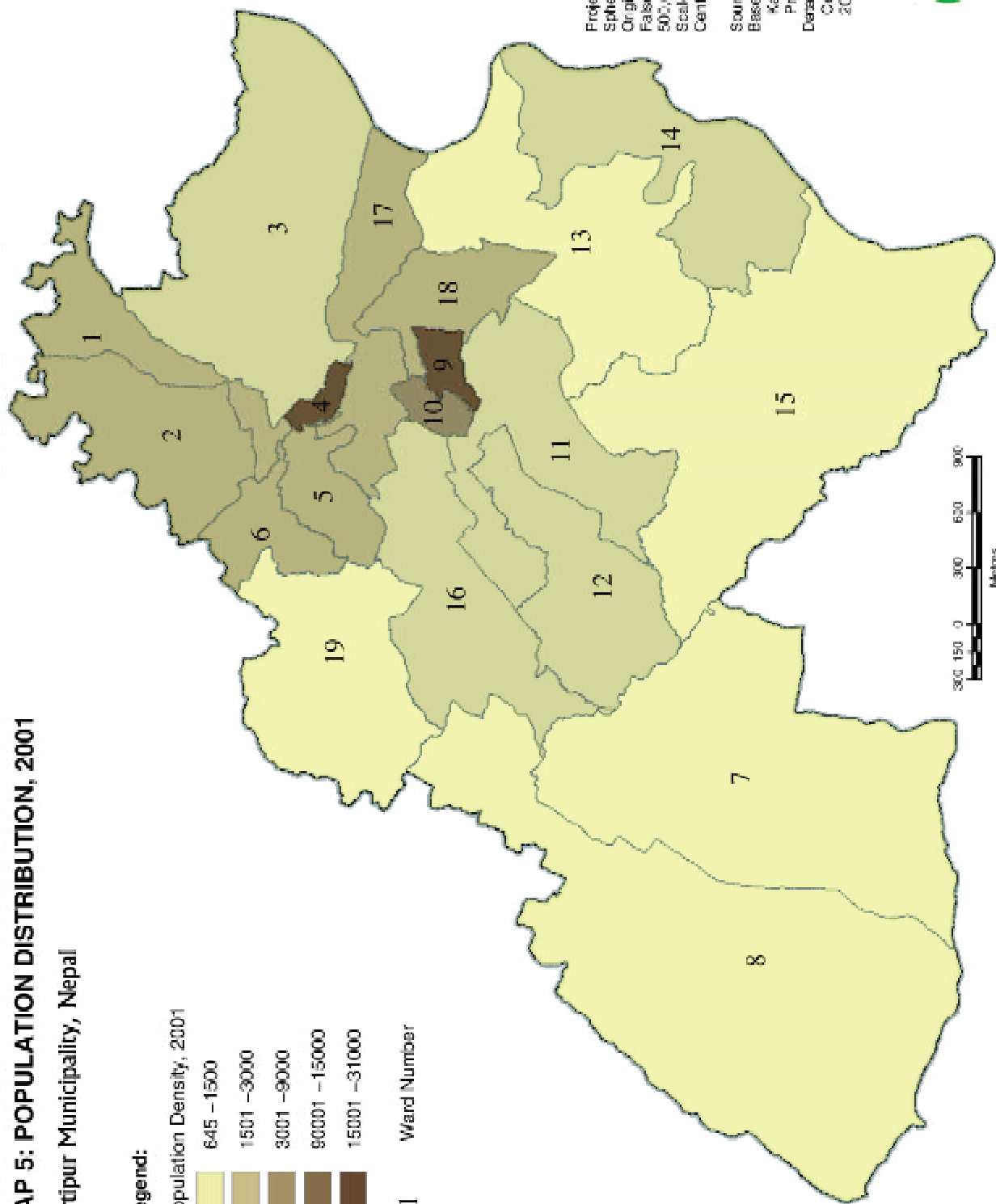
Kirtipur Municipality, Nepal

Legend:

Population Density, 2001



1 Ward Number



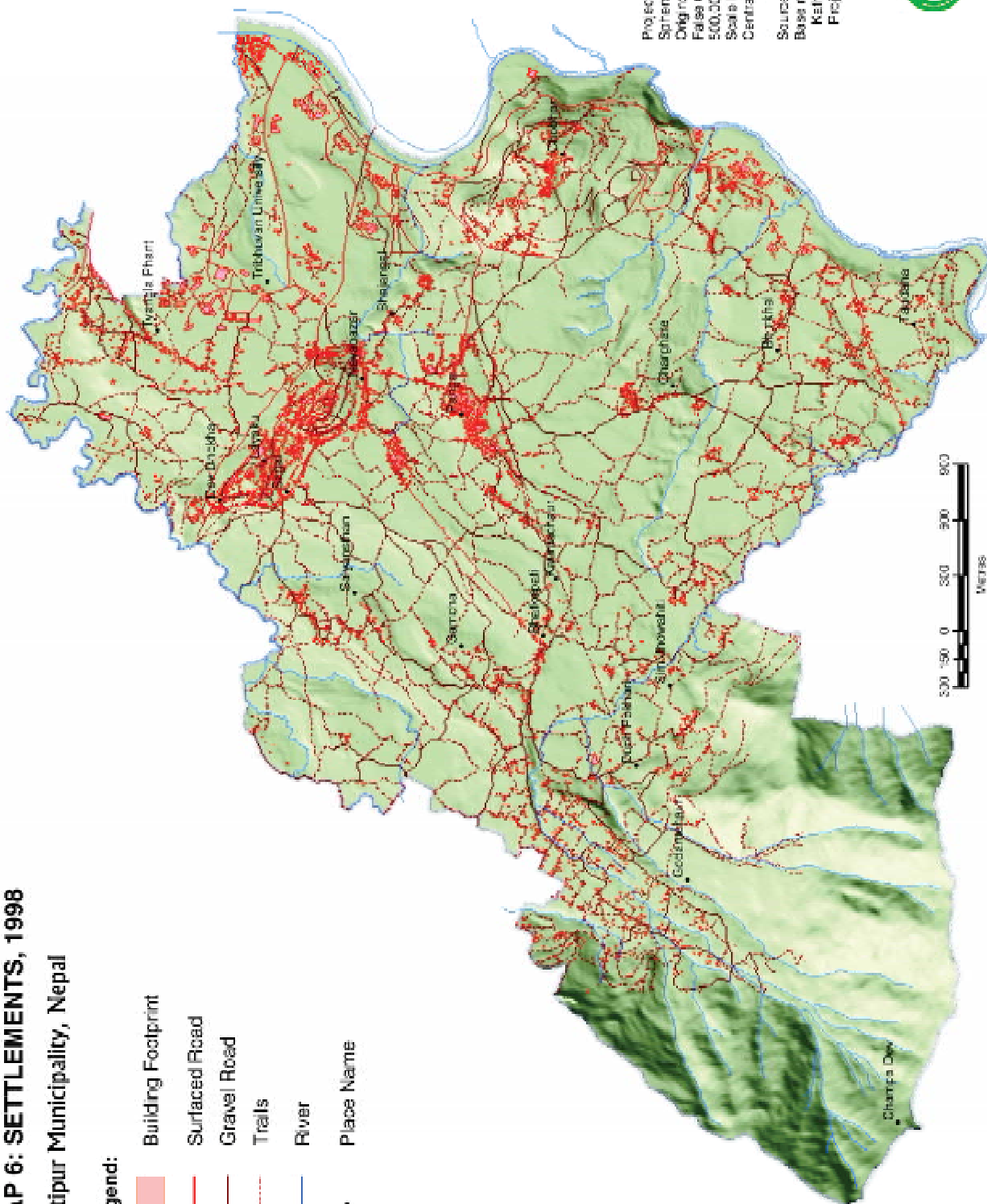
Projection: Modified UTM
Spheroid: Everest 1830
Origin: 87 00 00 E, 00 00 00 N
False Coordinates of Origin:
500,000m E, 0m N
Scale Factor at
Central Meridian: 0.9999

Source:
Base map
Kathmandu Urban Development
Project (KUDP, 1992), Scale 1:20,000
Data
Central Bureau of Statistics (CBS),
2001 Census



Kirtipur Municipality, Nepal

Building Footprint
 Surfaced Road
 Gravel Road
 Trails
 River
 Place Name



Source:
Base map
Kahramanli Urban Development
Project (KUDP, 1993). Scale : 2000

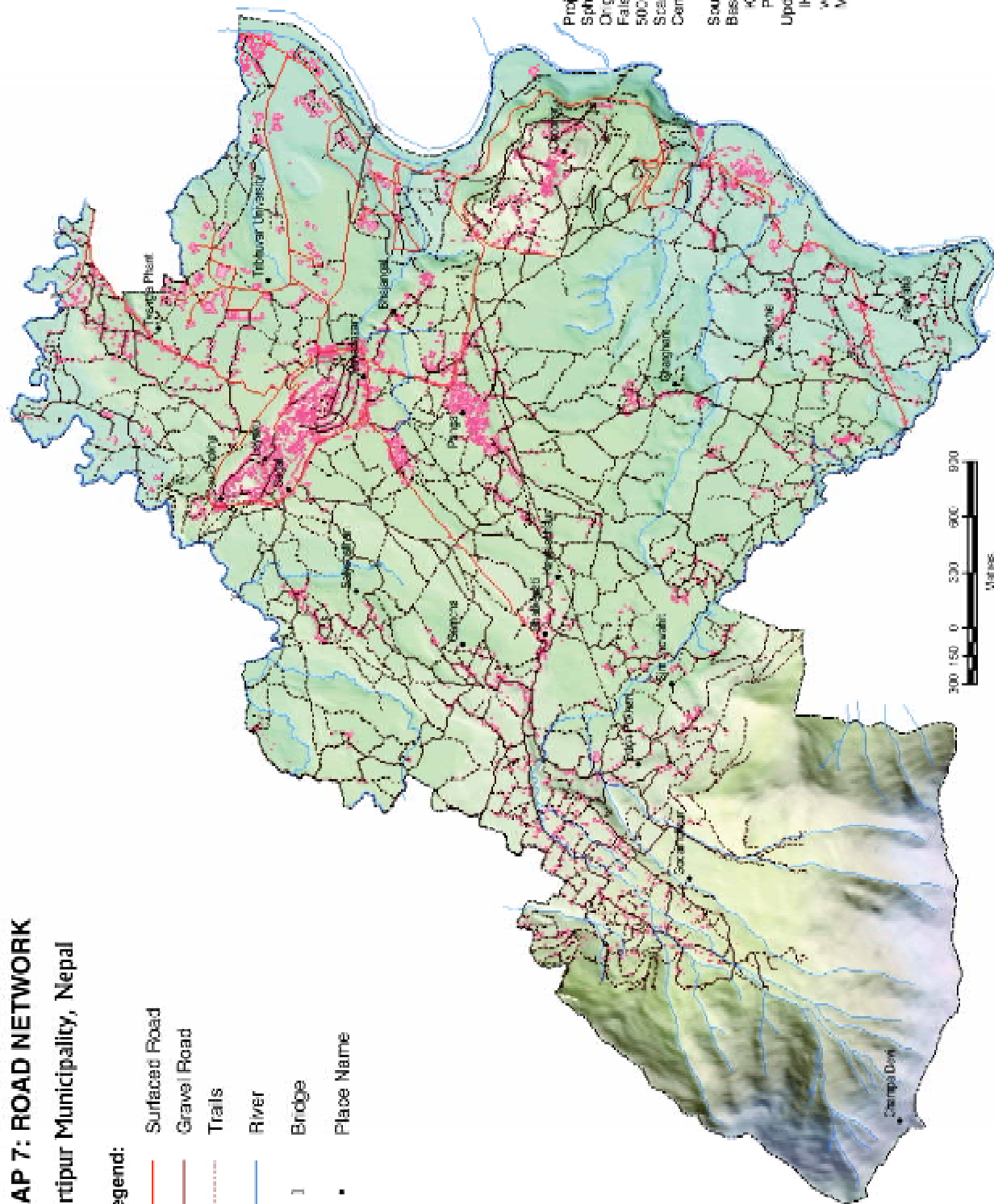


MAP 7: ROAD NETWORK

Kirtipur Municipality, Nepal

Legend:

- Surfaced Road
- Gravel Road
- Trails
- River
- | Bridge
- Place Name

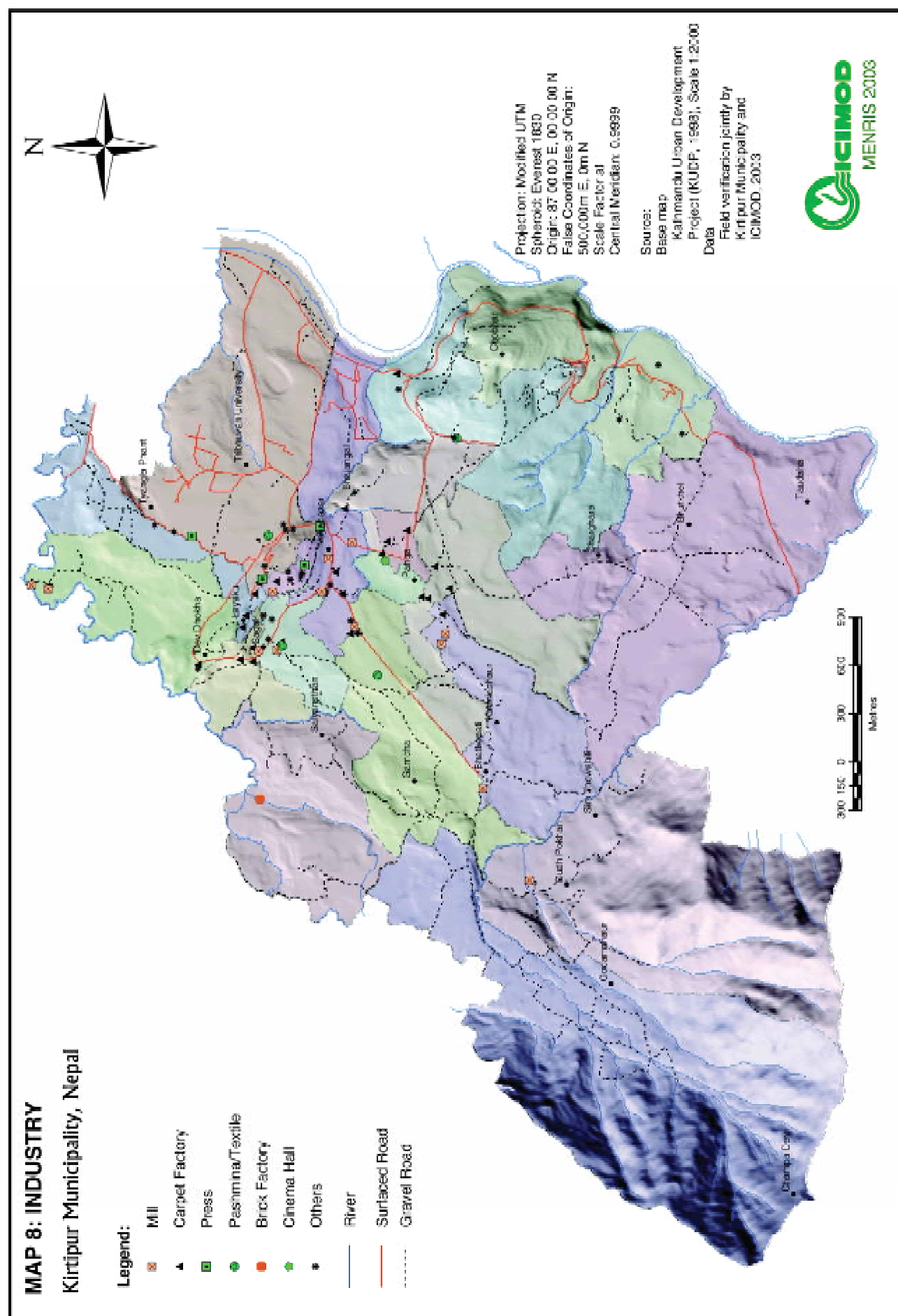


Projection: Modified UTM
 Spheroid: Everest 1830
 Origin: 87 00 00 E, 00 00 00 N
 False Coordinates of Origin:
 500,000 m E, 0m N
 Scale Factor at
 Central Meridian: 0.9939

Source:

Base map
 Kathmandu Urban Development
 Project (KUDP, 1993), Scale 1:25,000
 Updated
 IKONOS image (2001), field
 verification jointly by Kirtipur
 Municipality and ICIMOD, 2003





Kirtipur Municipality, Nepal

Transmission Line
Telephone Line
Surfaced Road
Gravel Road
Telephone Cabinet
Transformer









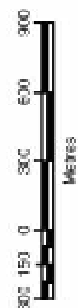
Projection: Modified UTM
Spheroid: Everest 1830
Origin: 87 00 00 E, 00 00 00 N
False Coordinates of Origin:
500,000m E, 0m N
Scale Factor:
Central Meridian: 0.9999
Source:
Base map
Kathmandu Urban Development
Project (KUDP, 1998). Scale: 1:2000
Data
Nepal Electricity Authority (NEA),
Nepal Telecommunications
Corporation (NTC)



Kirtipur Municipality, Nepal

--- Water Supply Line

- | | | | | | | |
|---|---|---|---|---|---|---|
| Water Source | Water Tank/Reservoir | Pond | Water Spout | Kuwa/Well | Tap | River |
|  |  |  |  |  |  |  |



Projection: Modified UTM
Spheroid: Everest 1830
Origin: 87 00 00 E, 00 00 00 N
False Coordinates of Origin:
500,000m E, 0m N
Scale Factor: 1
Central Meridian: 0.9939

Sources:
Base map
Kahmandu Urban Development
Project (KUDP, 1998); Scale 1:2000
Data
Nepal Water Supply Corporation
(NWSC)

