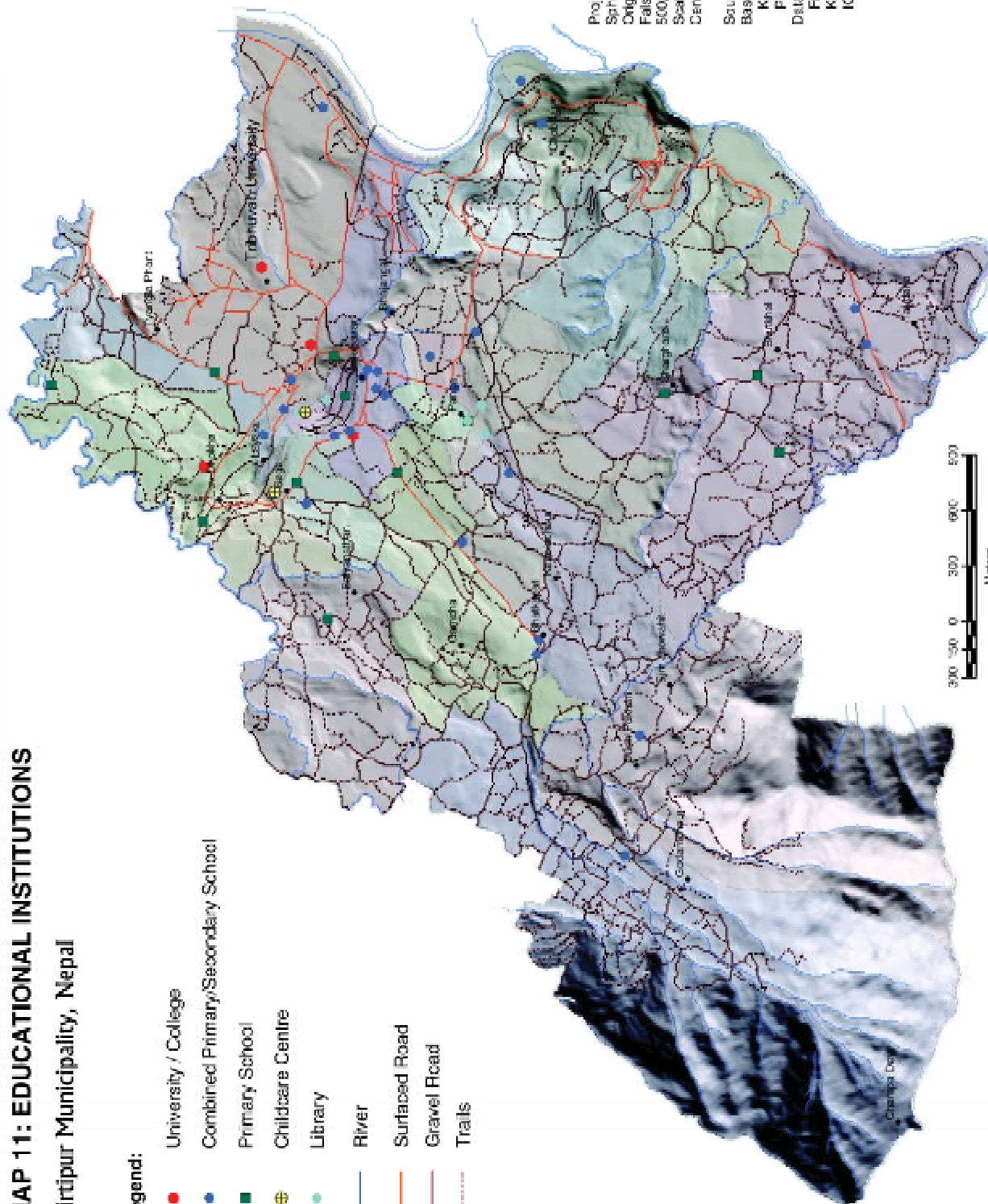


## MAP 11: EDUCATIONAL INSTITUTIONS

Kirtipur Municipality, Nepal

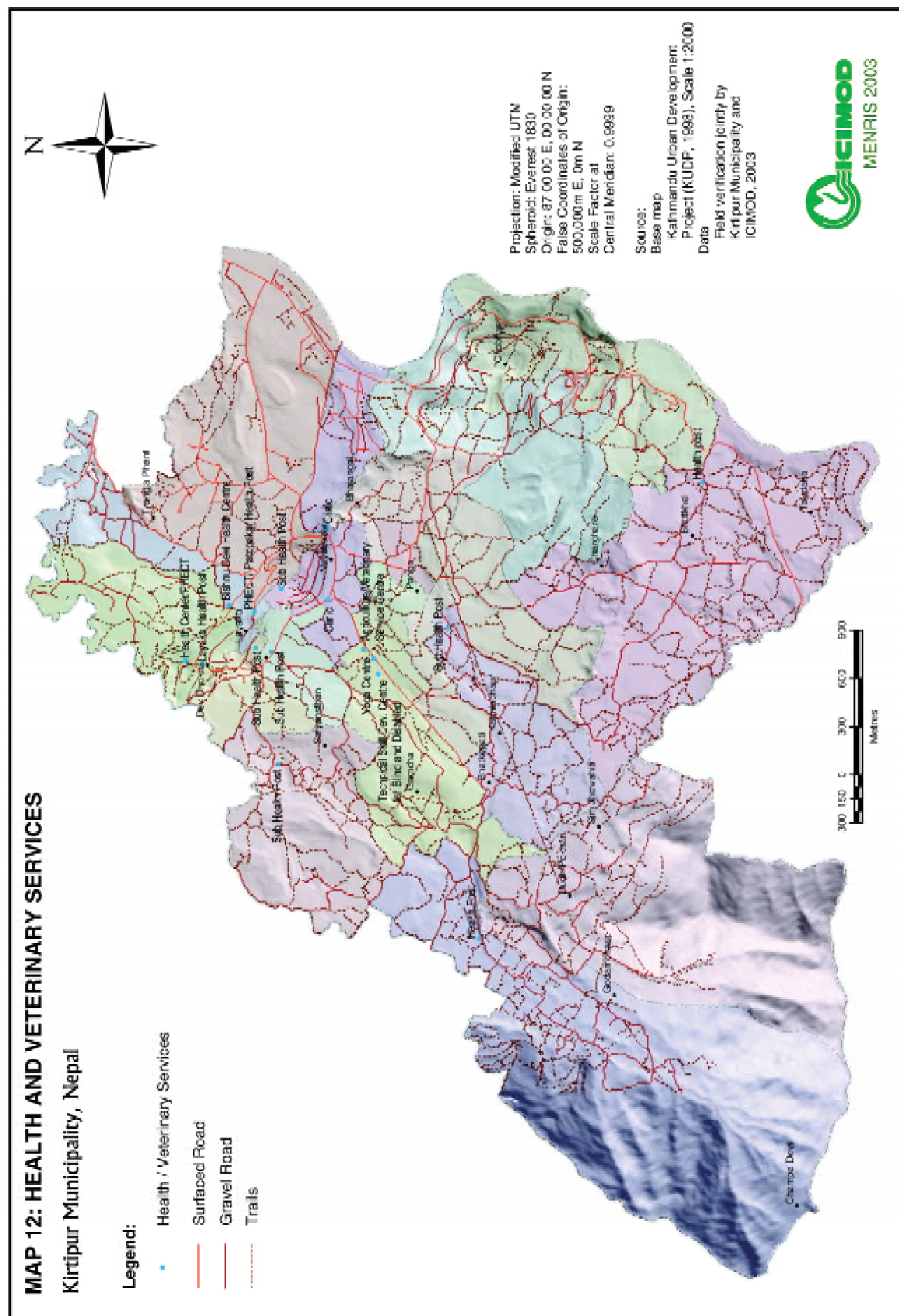
### Legend:

- University / College
- Combined Primary/Secondary School
- Primary School
- Childcare Centre
- Library
- River
- Surfaced Road
- Gravel Road
- Trails



Projection: Modified UTM  
Spheroid: Everest 1830  
Origin: 87°00'00" E, 28°00'00" N  
False Coordinates of Origin:  
500,000m E, 0m N  
Scale Factor at  
Central Meridian: 0.9932

Sources:  
Base map  
Kathmandu Urban Development  
Project (KUDP, 1993), Scale 1:2000  
Data  
Field verification jointly by  
Kirtipur Municipality and  
ICIMOD, 2003

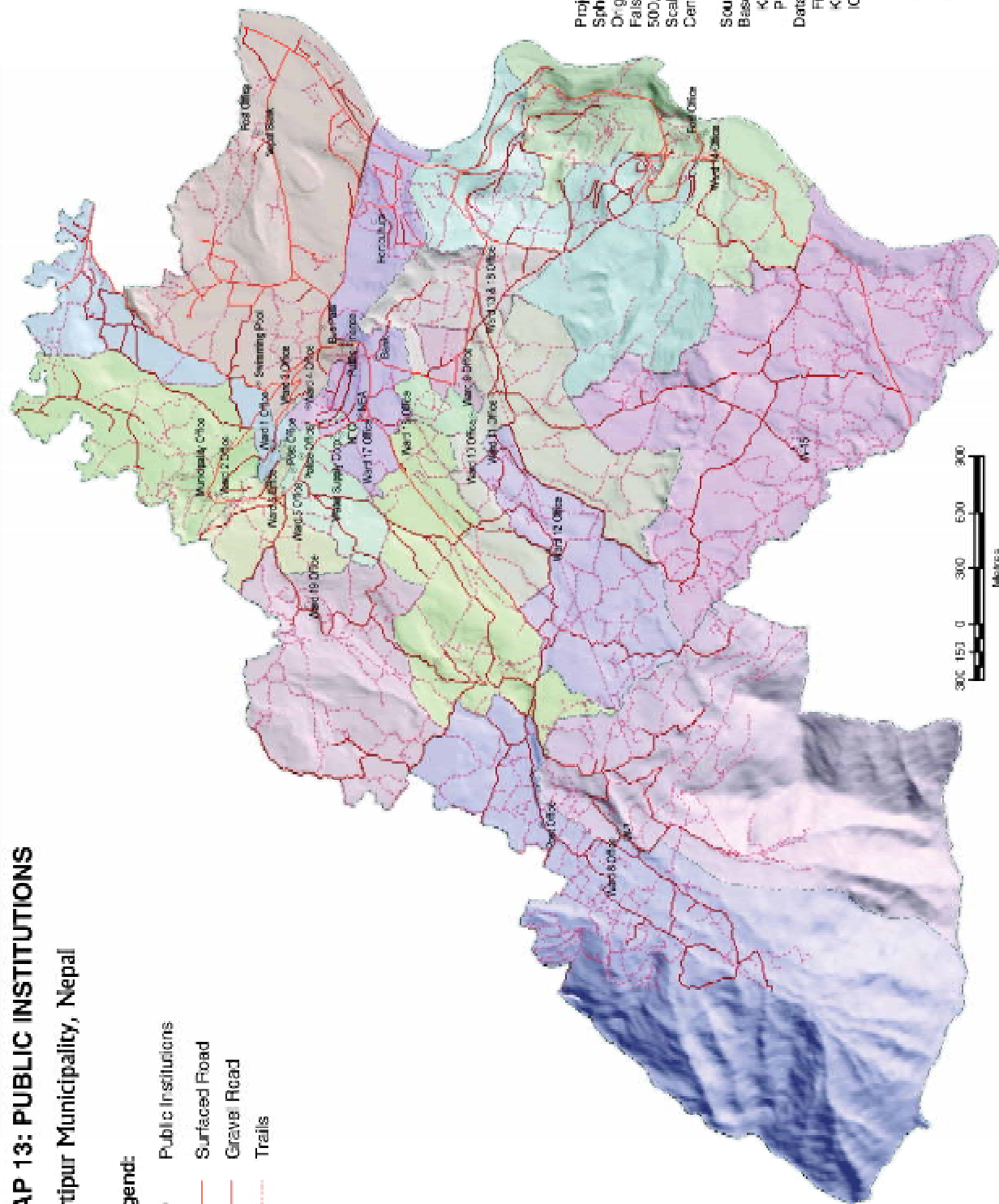


## MAP 13: PUBLIC INSTITUTIONS

Kirtipur Municipality, Nepal

### Legend:

- Public Institutions
- Surfaced Road
- Gravel Road
- Trails



Projection: Modified UTM  
 Spheroid: Everest 1830  
 Origin: 87 00 00' E, 00 00 00' N  
 False Coordinates of Origin:  
 500,000 m E, 0m N  
 Scale Factor at  
 Central Meridian: 0.9999

### Sources:

Base map:  
 Kathmandu Urban Development  
 Project (KUDP, 1998), Scale 1:2000  
 Data:  
 Field verification jointly by  
 Kirtipur Municipality and  
 ICIMOD, 2003

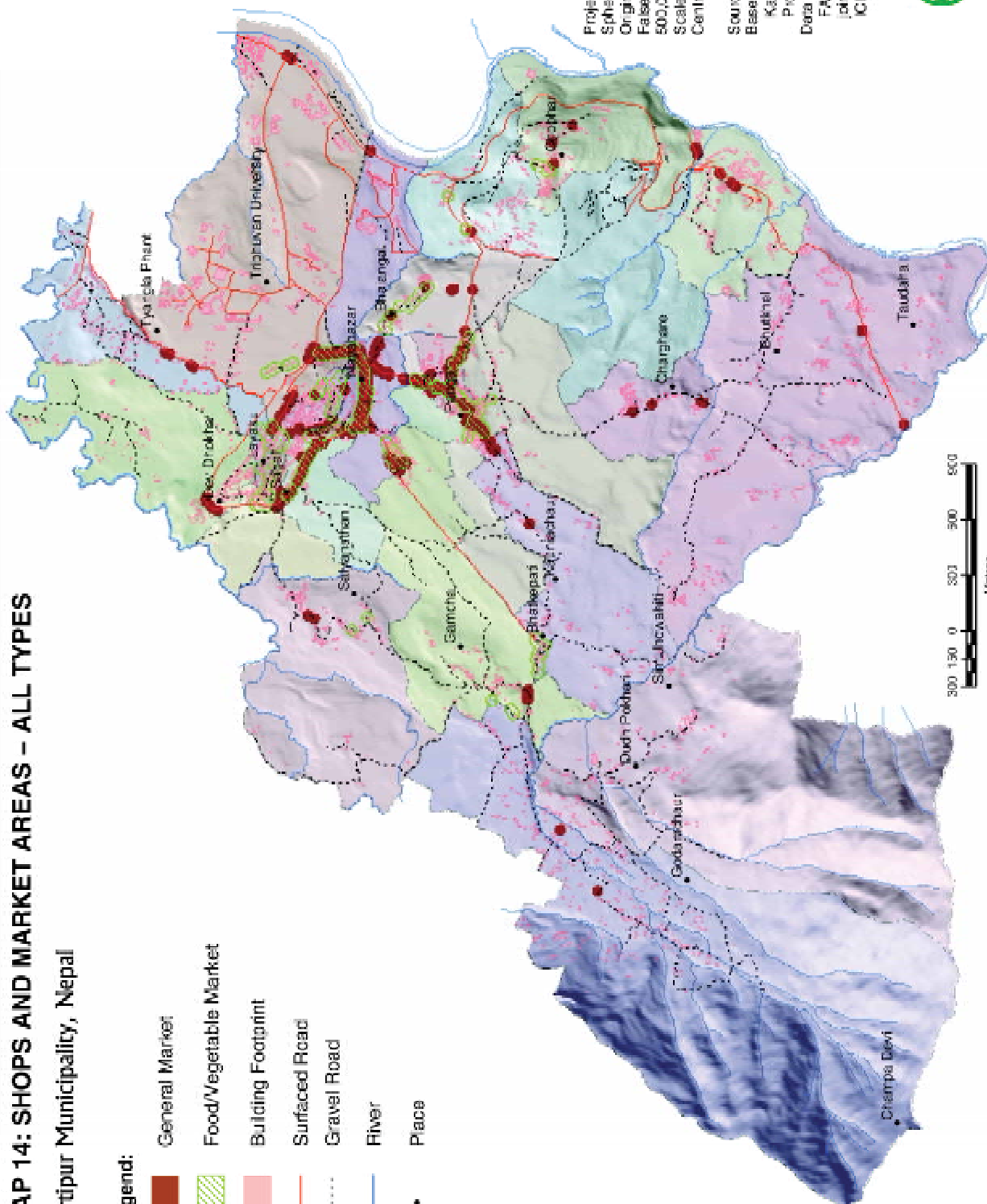


## MAP 14: SHOPS AND MARKET AREAS – ALL TYPES

Kirtipur Municipality, Nepal

### Legend:

- General Market
- Food/Vegetable Market
- Building Footprint
- Surfaced Road
- Gravel Road
- River
- Place



Projection: Modified UTM  
Spheroid: Everest 1830  
Origin: 87 00 00° E, 00 00 00° N  
False Coordinates of Origin:  
500,000 m E, 0m N  
Scale Factor at  
Central Meridian: 0.9999

### Source:

Base map  
Kathmandu Urban Development  
Project (KUDP, 1998), Scale 1:2000  
Data  
FAC, 2000; Field verification  
jointly by Kirtipur Municipality and  
ICIMOD, 2003



## Kirtipur Municipality, Nepal

Food and Vegetable Markets/Shops

Building Footprint

Surfaced Road

Gravel Road

River

Place



Projection: Modified UTM  
Spheroid: Everest 1830  
Origin: 87 00 00 E, 00 00 00 N  
False Coordinates of Origin:  
500,000 m E, 0 m N  
Scale Factor at  
Central Meridian: 0.9999

Source:  
Base map  
Kathmandu Urban Development  
Project (KUDP, 1993), Scale 1:2000  
Data  
FAC, 2002; field verification  
jointly by Kirtipur Municipality and  
ICIMOD, 2003

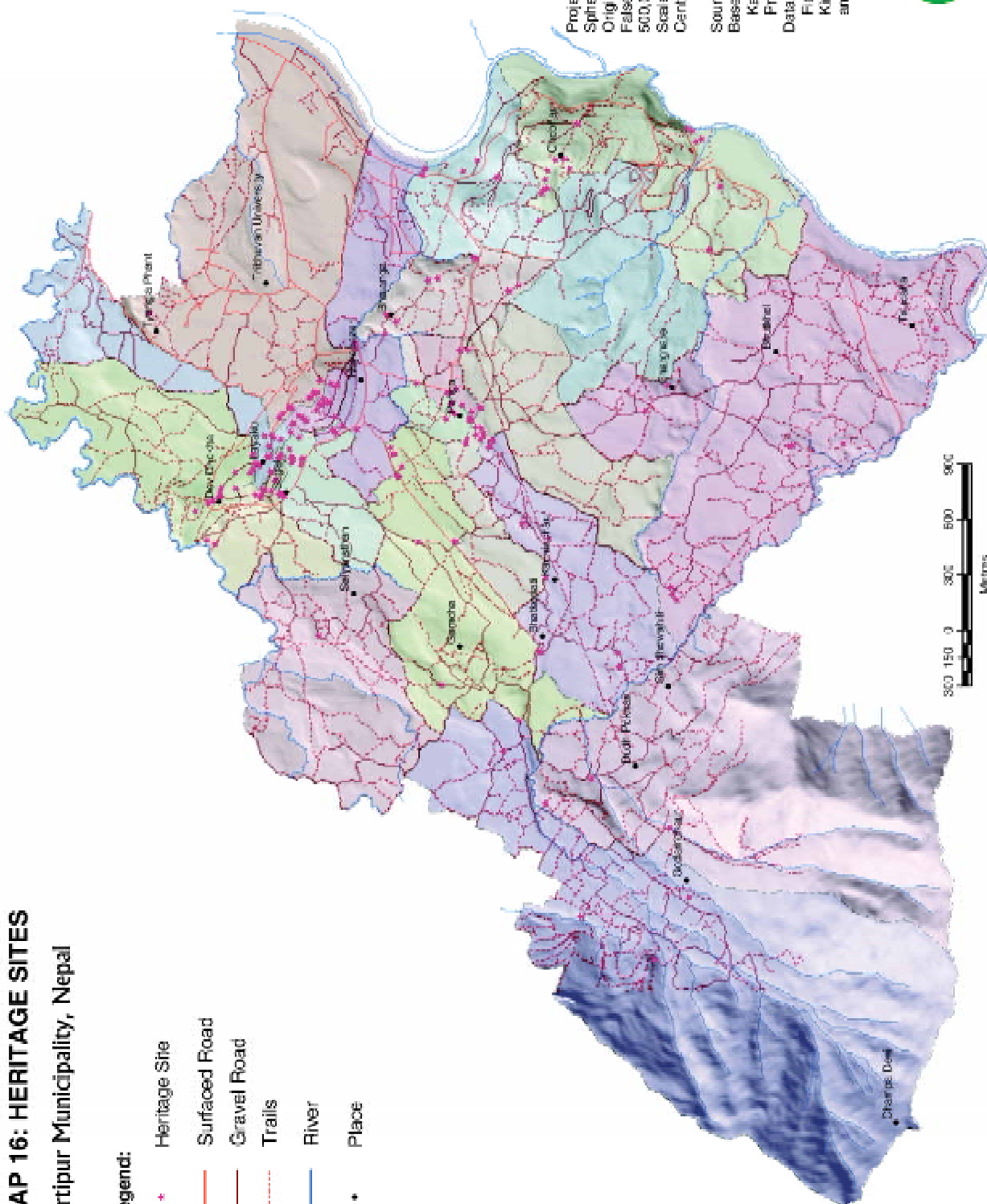


## MAP 16: HERITAGE SITES

Kirtipur Municipality, Nepal

### Legend:

- \* Heritage Site
- Surfaced Road
- Gravel Road
- Trails
- River
- Place



Projection: Modified UTM  
 Spheroid: Everest 1830  
 Origin: 87 00 00 E, 00 00 00 N  
 False Coordinates of Origin:  
 500,000m E, 0m N  
 Scale Factor at  
 Central Meridian: 0.9998

### Source:

Base map  
 Kathmandu Urban Development  
 Project (KUDP, 1998), Scale 1:2000  
 Data  
 Field verification jointly by  
 Kirtipur Municipality  
 and ICIMOD, 2003

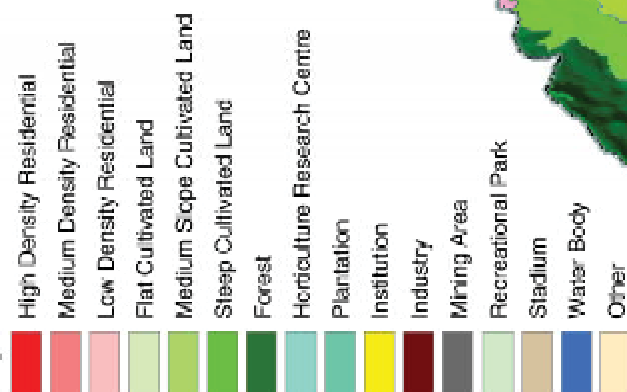




**MAP 17: LAND USE AND LAND COVER MAP 1992**

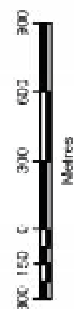
Kirtipur Municipality, Nepal

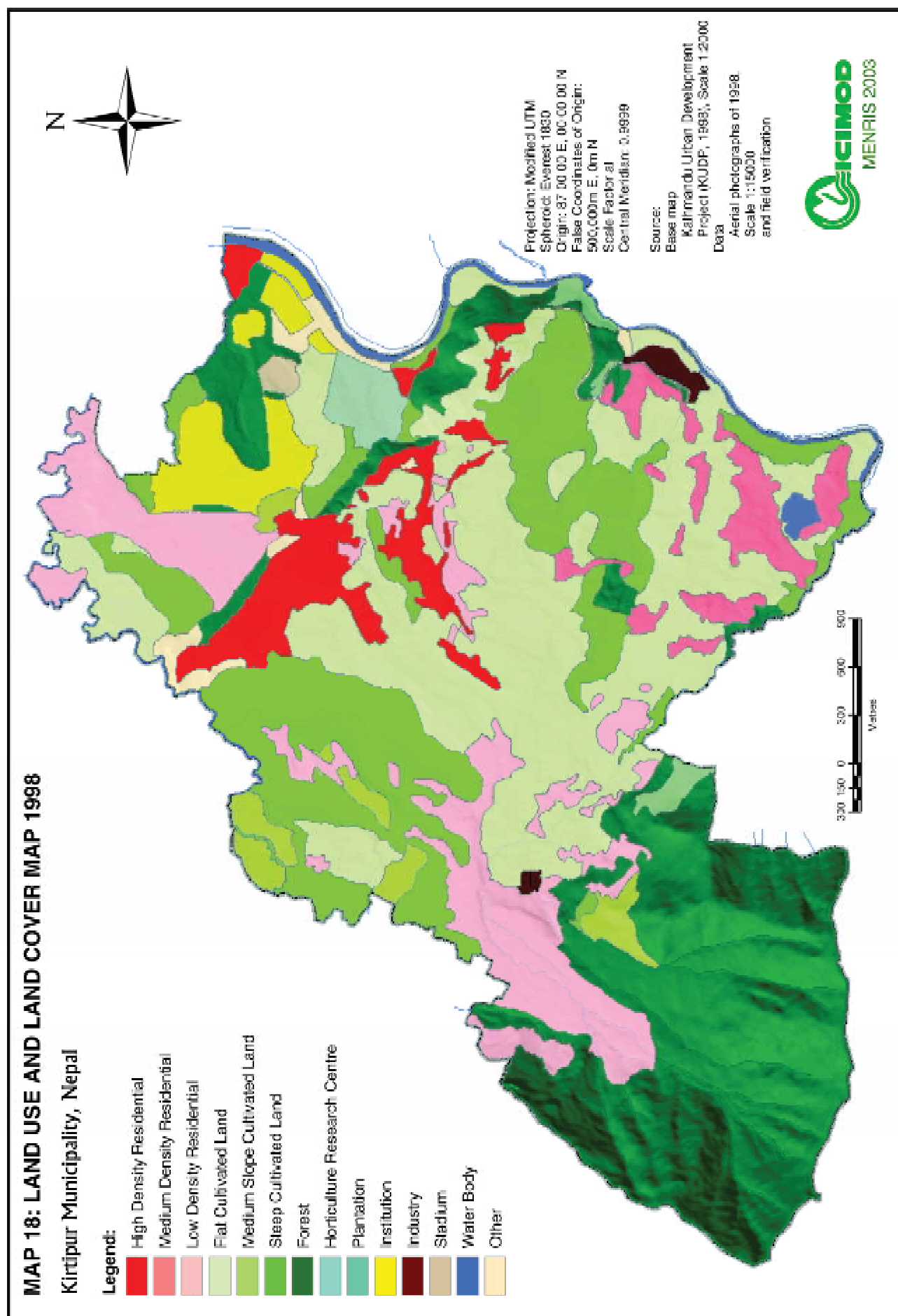
**Legend:**



Projection: Modified UTM  
 Spheroid: Everest 1830  
 Origin: 87 00 00 E, 00 50 00 N  
 False Coordinates of Origin:  
 500,000m E, 0m N  
 Scale Factor at  
 Central Meridian: 0.9999

Source:  
 Base map  
 Kathmandu Urban Development  
 Project (KUDP, 1988), Scale 1:2000  
 Data  
 Aerial photographs of 1992  
 scale 1:10000





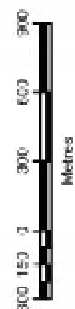
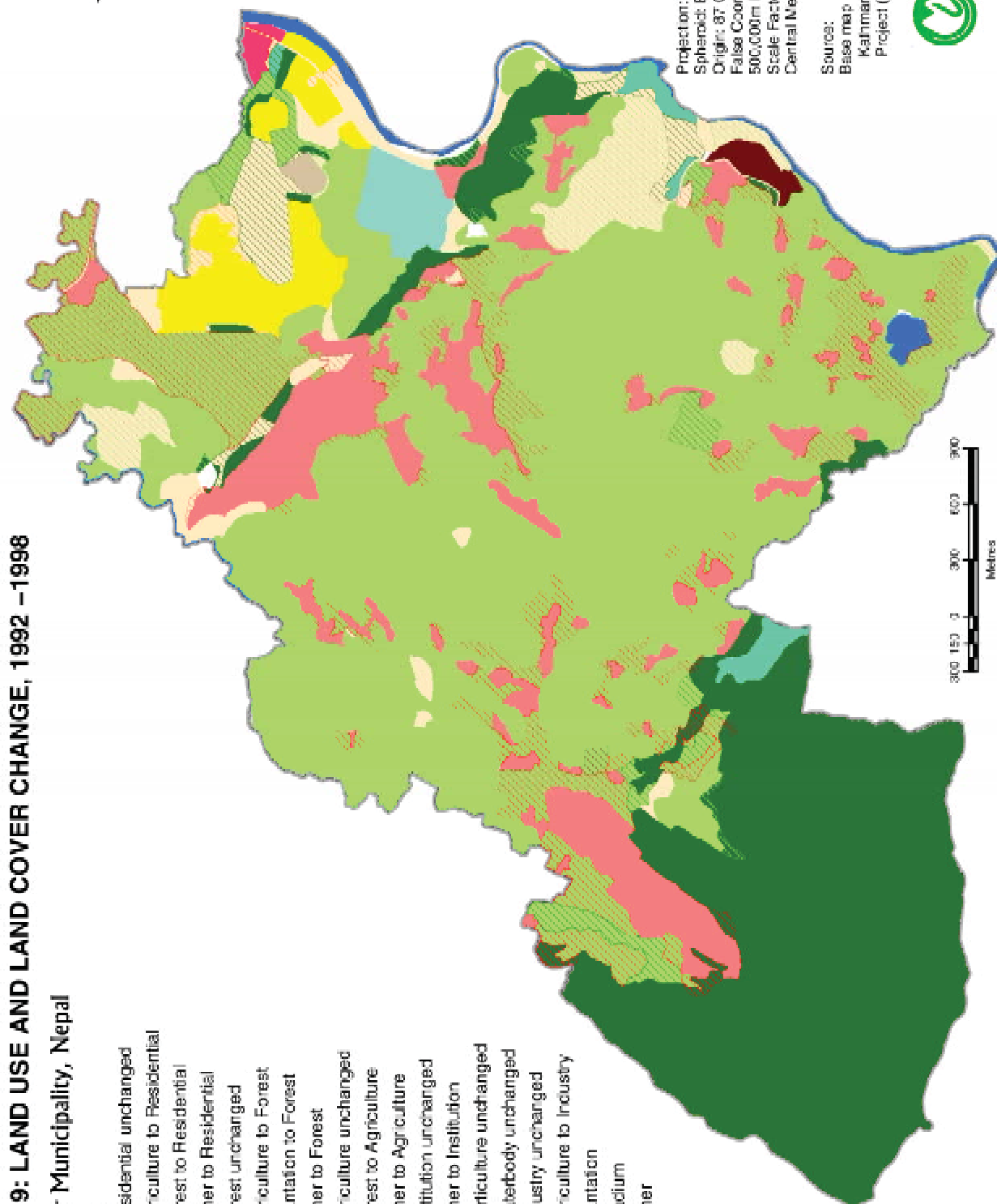


**MAP 19: LAND USE AND LAND COVER CHANGE, 1992 –1998**

Kirtipur Municipality, Nepal

**Legend:**

- Residential unchanged
- Agriculture to Residential
- Forest to Residential
- Other to Residential
- Forest unchanged
- Agriculture to Forest
- Plantation to Forest
- Other to Forest
- Agriculture unchanged
- Forest to Agriculture
- Other to Agriculture
- Institution unchanged
- Other to Institution
- Horticulture unchanged
- Waterbody unchanged
- Industry unchanged
- Agriculture to Industry
- Plantation
- Stadium
- Other



Projection: Modified UTM  
 Spheroid: Everest 1830  
 Origin: 87 00 00 E, 00 00 00 N  
 False Coordinates of Origin:  
 500,000m E, 0m N  
 Scale Factor at  
 Central Meridian: 0.9999

Sources:  
 Base map  
 Kathmandu Urban Development  
 Project (KUDP, 1993), Scale 1:20,000



# **MAP 20: URBAN GROWTH, 1992 –1998**

## **Kirtipur Municipality, Nepal**

### **Legend:**

#### **Urban Growth**

- Growth to High Density
- Growth to Medium Density
- Growth to Low Density



Projection: Modified UTM  
 Spheroid: Everest 1830  
 Origin: 87 00 00 E, 00 00 00 N  
 False Coordinates of Origin:  
 500,000m E, 0m N  
 Scale Factor at  
 Central Meridian: 0.9999

Sources:  
 Base map  
 Kathmandu Urban Development  
 Project (KUDP, 1996), Scale 1:2000

