



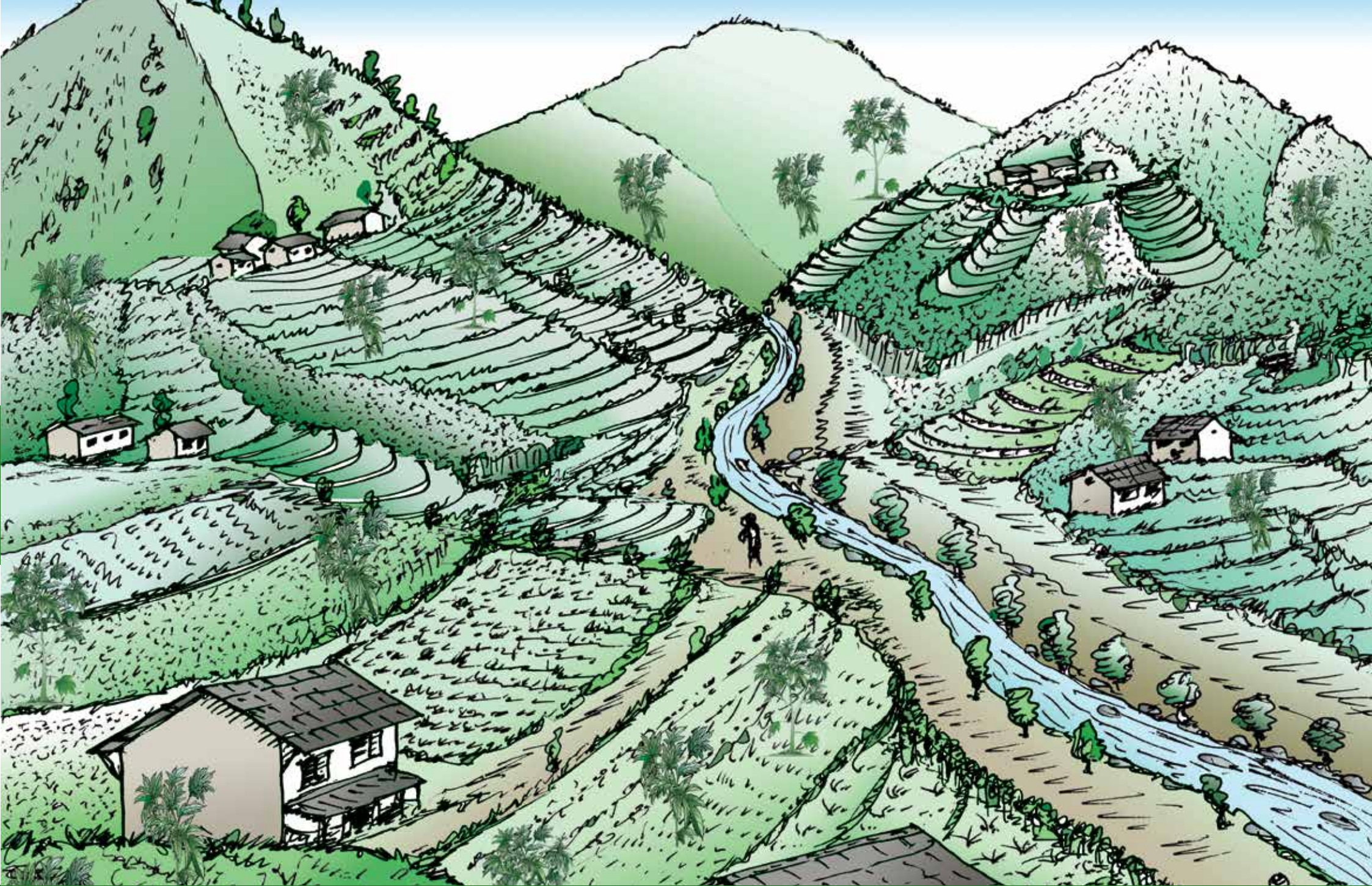
1 Allo plant

ICIMOD



sabah
Nepal





2 Allo plants in hilly landscape





3 Women separating allo bark from its stem



हस्तकला अल्लो उत्पादित सामानहरु



4 Handicraft shop in Kathmandu





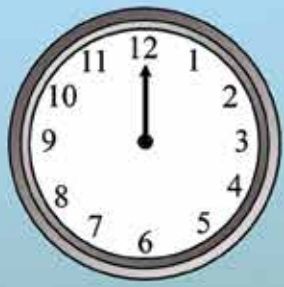
5 Local market place in a village





6 Allo harvest from November to January (Mangsir to Magh)





24 hours



चीसो पानी



7 Allo bark soaked in cold water





8 Women adding ash to water





9 No use of caustic soda





10 Allo bark cooking in boiling water on an improved cooking stove





11 Women washing allo bark in river



कमेरो



11a Afterwards soaking in white clay





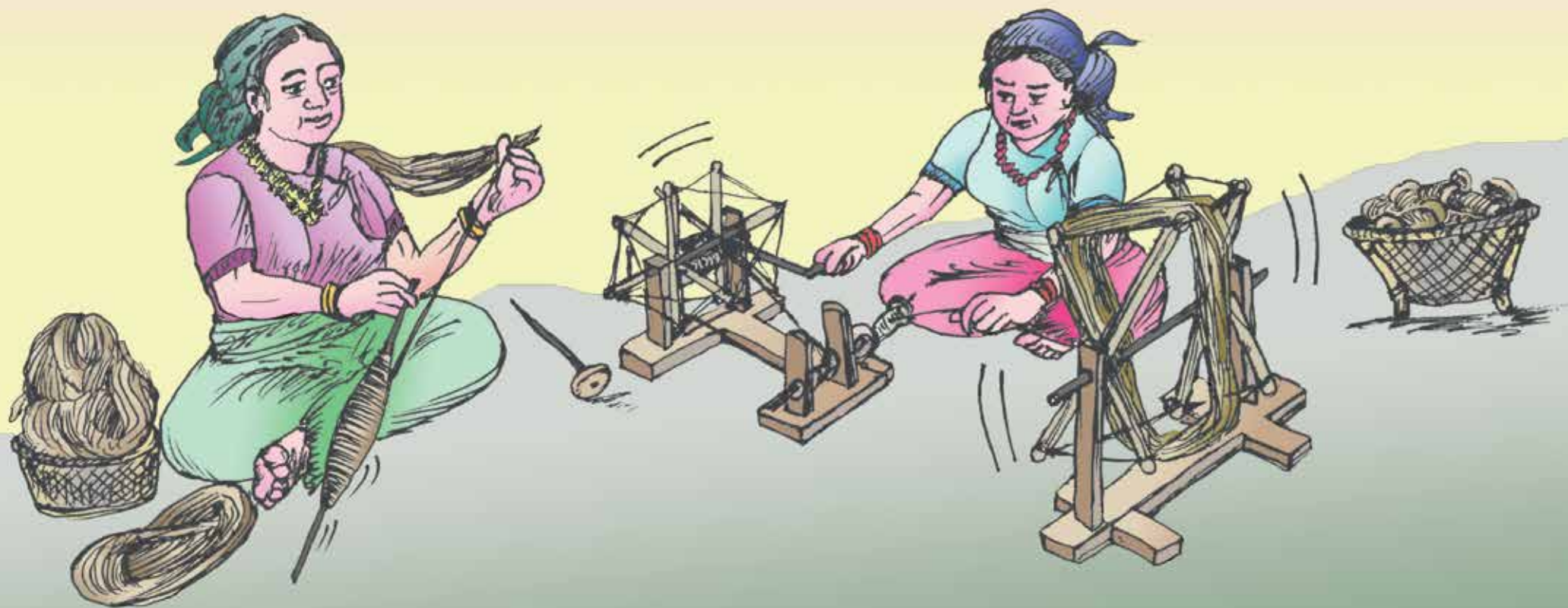
12 Allo bark hanging to dry in the sun





13 Women separating the woolen material from the treated allo bark





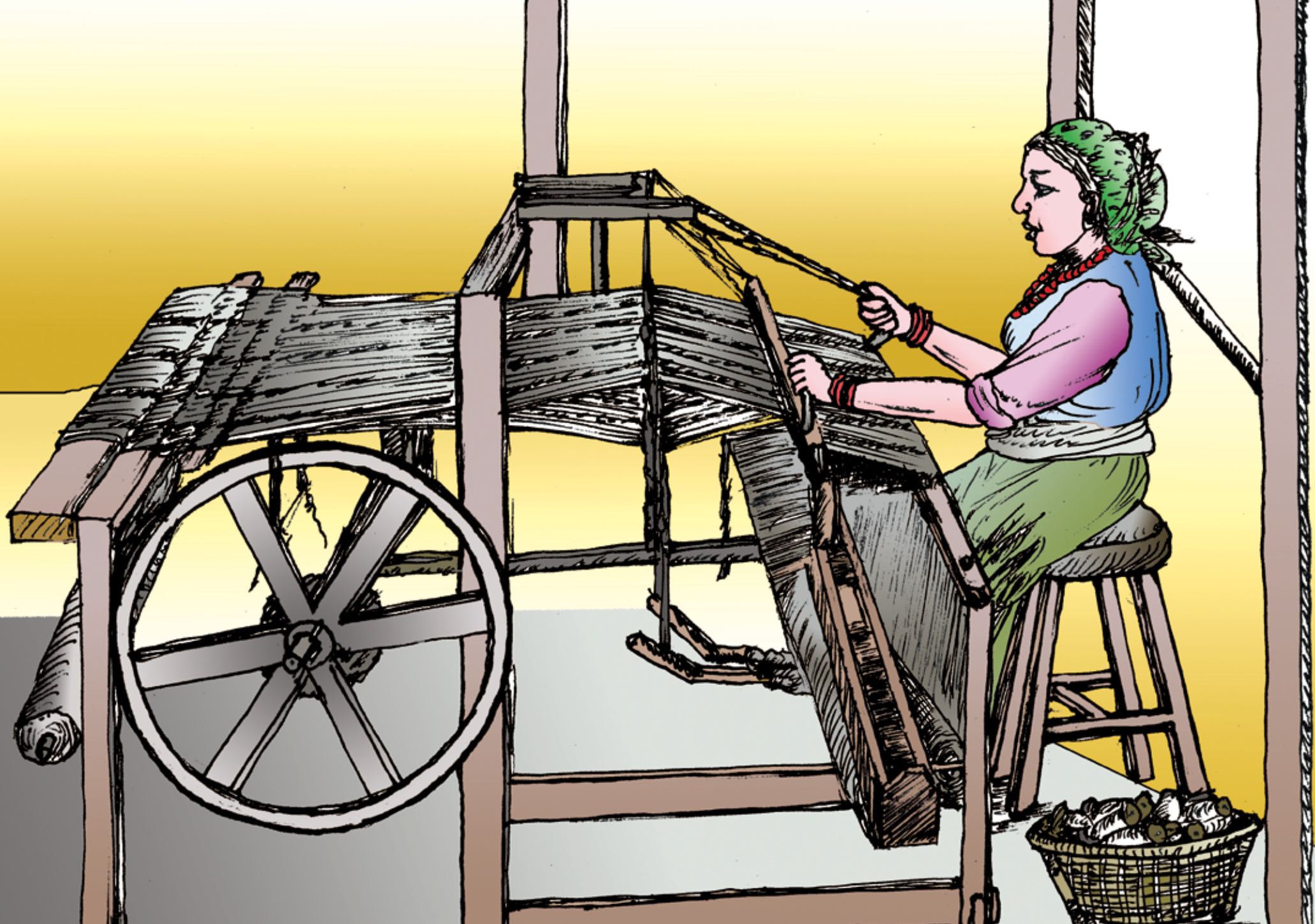
14 Women spinning allo by hand and women ordering the thread





15 Woman spinning thread using a spinning machine





16 Woman using a loom to make fabric





17 Women knitting allo thread





18 Women using sewing machines to make allo products





19 Allo preparation and processing chain





20 Random shop selling different products





21 Packaging of allo products





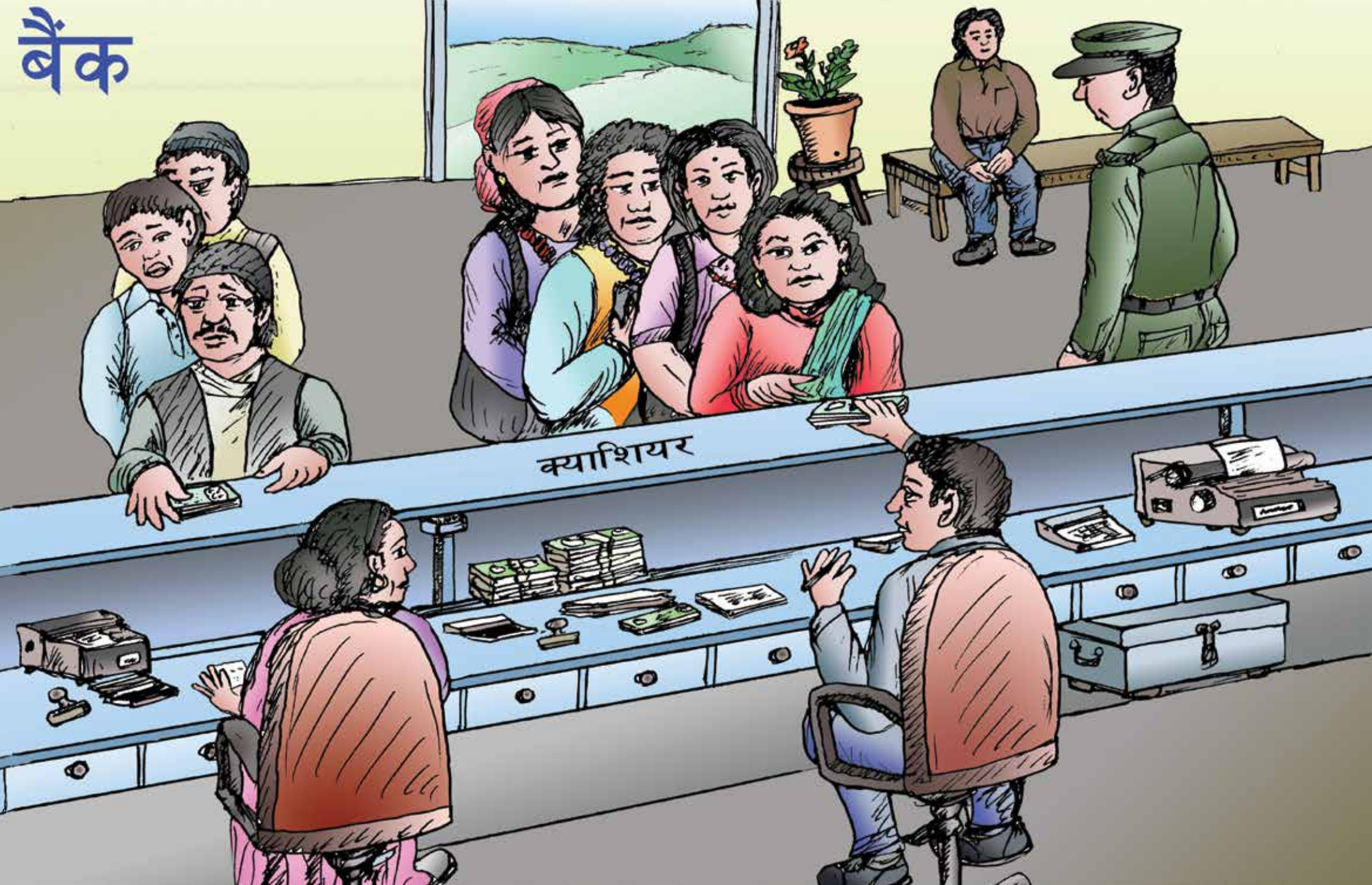
kailash

TRULY SACRED



22 “Kailash – Truly Sacred” brand





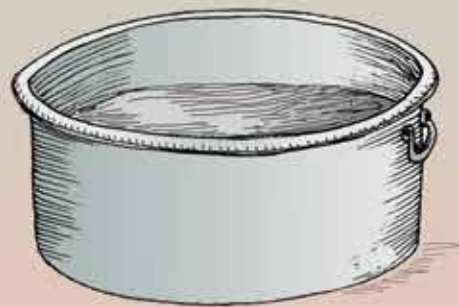
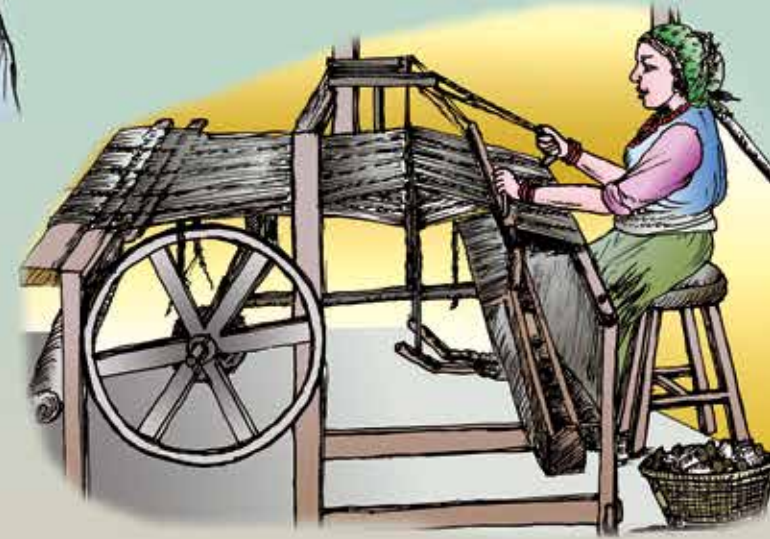
23 People depositing money in bank





24 Trust between member of allo community groups





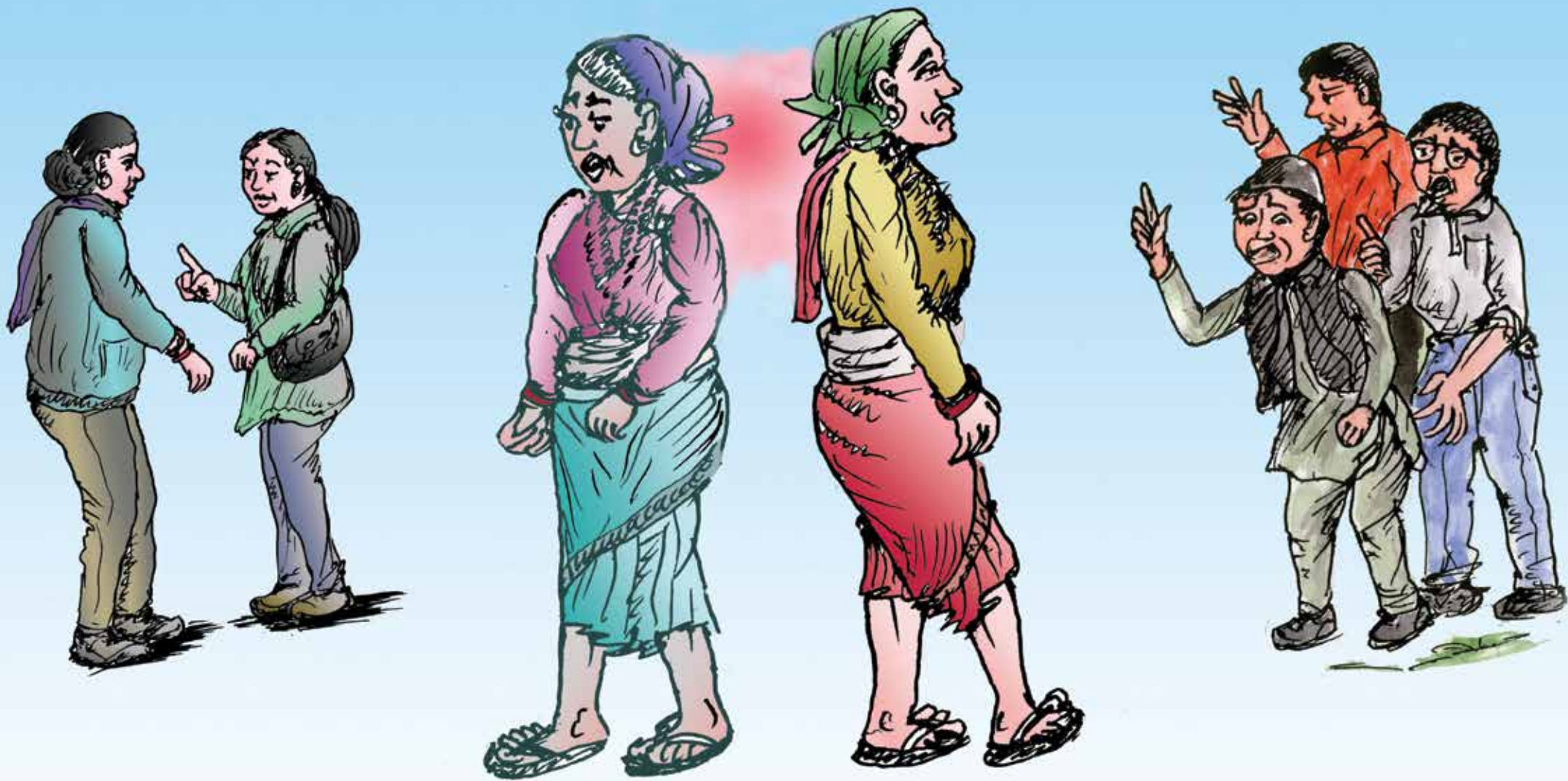
25 Members of the allo community group handling different tasks





26 Allo community group discussion and rule setting





27 Allo community group fights



सामूदायिक अल्लो उत्पादन केन्द्र



28 Community Facility Centre





बैंक



29 Allo community group receiving loan from bank





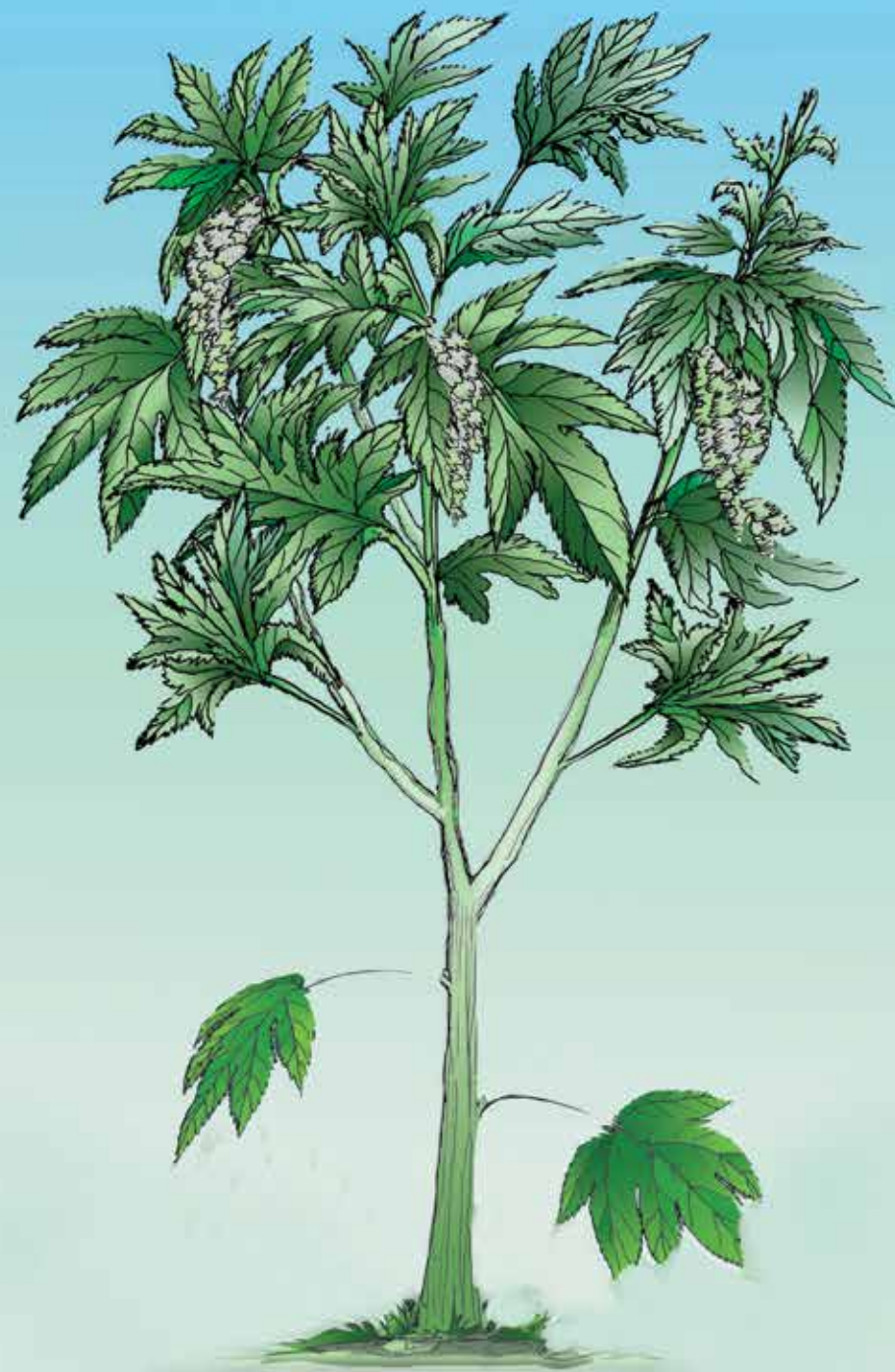
30 Trainer giving allo community group training





31 Do not cut allo plants with thin stems and lots of branches





32 Do cut allo plants with thick stems and few branches





33 Do cut mature allo with a knife three inches above the ground, and use gloves





34 Do not ripallo plants out of the ground





35 Nurture the ground with allo leaves

