

AT A GLANCE

Journey of the Landscape Initiative for the Far-eastern Himalayas (HI-LIFE)



ICIMOD

FOR MOUNTAINS AND PEOPLE



Start-Up Phase

2009–2014

Developing a shared understanding

- HI-LIFE boundary outlined
- Key partners:
 - Kunming Institute of Botany, China
 - GB Pant National Institute of Himalayan Environment and Sustainable Development, India
 - Forest Department, Ministry of Natural Resources and Environmental Conservation, Myanmar
- Country feasibility reports and regional synthesis
- Country conservation development strategies, country comprehensive environmental and socioeconomic monitoring strategies, and regional synthesis
- Regional implementation plan/monitoring and evaluation framework
- Regional cooperation framework



Pre-Implementation Phase

2015–2016

Identifying interventions for integrated landscape management

- Identification of pilot sites
- Landscape journey (all pilot areas)
- Ecosystem services and livelihoods assessment in protected areas
- Regional training of trainers on innovative livelihoods
- Formation of national coordination committee (India)
- Baseline survey to understand innovative livelihoods and integrated land and water management (Myanmar)
- Community information resource centre (Myanmar)
- National training on bamboo value chain development (India)
- Inventory of wild edibles/homestay exposure trip (China) *ongoing*



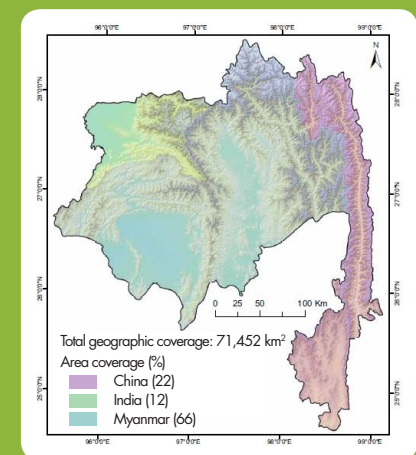
Implementation Phase

2017 onwards

Strengthening transboundary cooperation

- Co-produce regional, transboundary knowledge
- Strengthen regional partnerships
- Strengthen bilateral collaboration
- Develop partnerships and provide technical support to integrated conservation and development in pilot areas

HI-LIFE Boundary





Focal partners:



For further information: Bandana Shakya bandana.shakya@icimod.org

Photos: Yang Yongping, Aaranyak, Myint Kyaw

ICIMOD gratefully acknowledges the support of its core donors: the governments of Afghanistan, Australia, Austria, Bangladesh, Bhutan, China, India, Myanmar, Nepal, Norway, Pakistan, Switzerland, and the United Kingdom.

© ICIMOD 2016

International Centre for Integrated Mountain Development

Tel +977 1-5003222 **Email** info@icimod.org **Web** www.icimod.org