

1

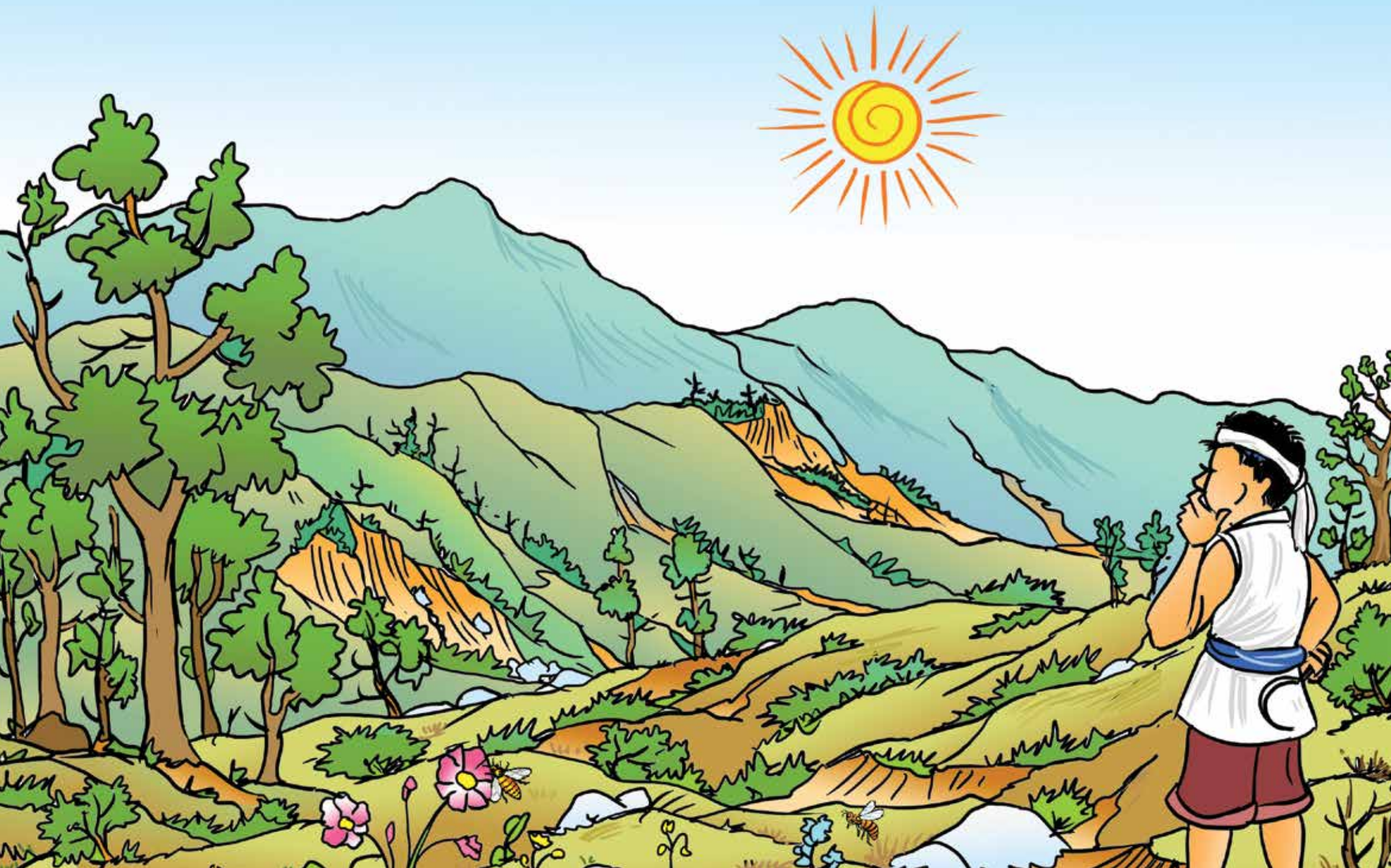
ICIMOD



# 1 Field of flowers with bees







## 2 People observe landscape with fewer flowers and bees









### 3 Plantation of trees in new area

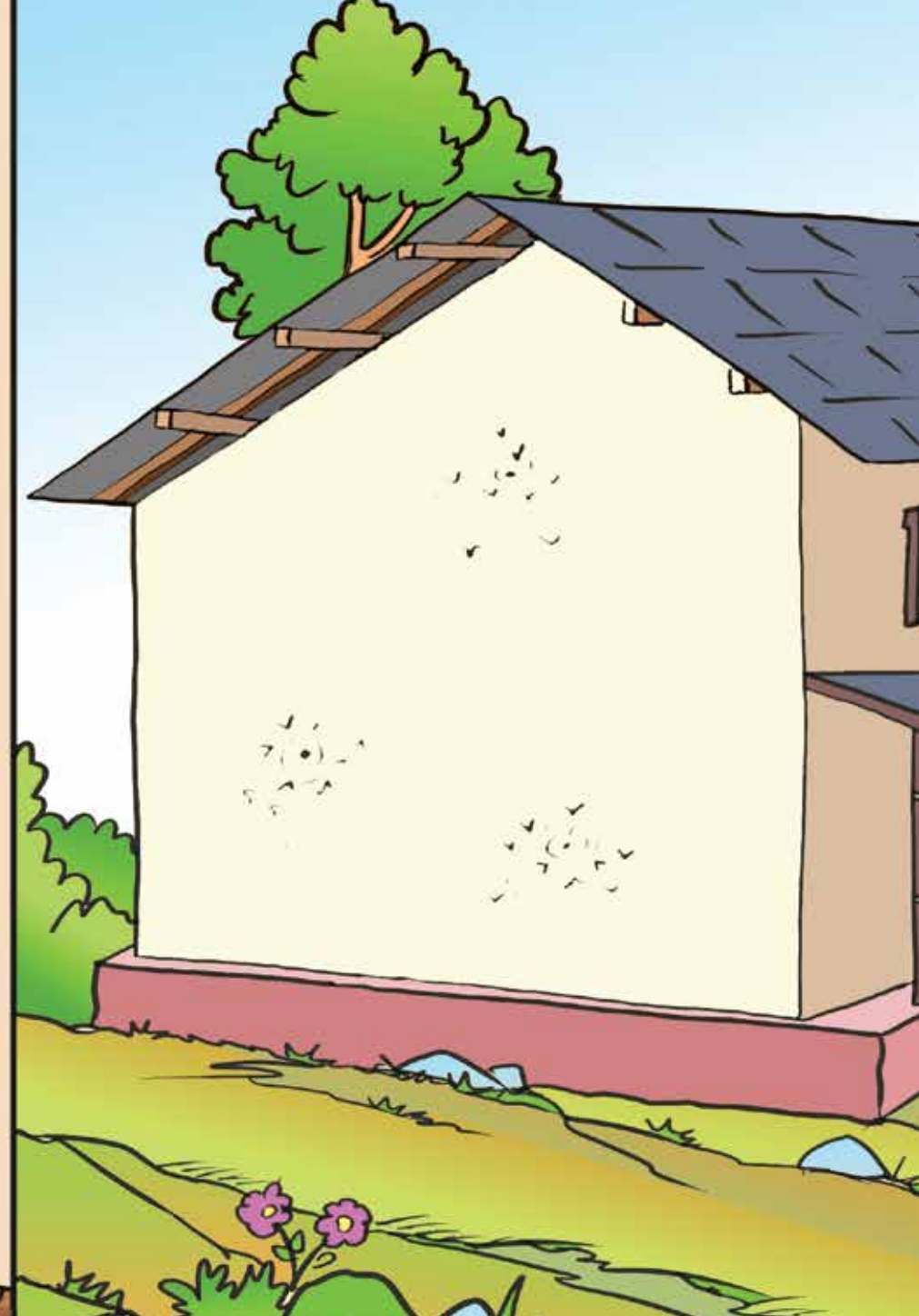
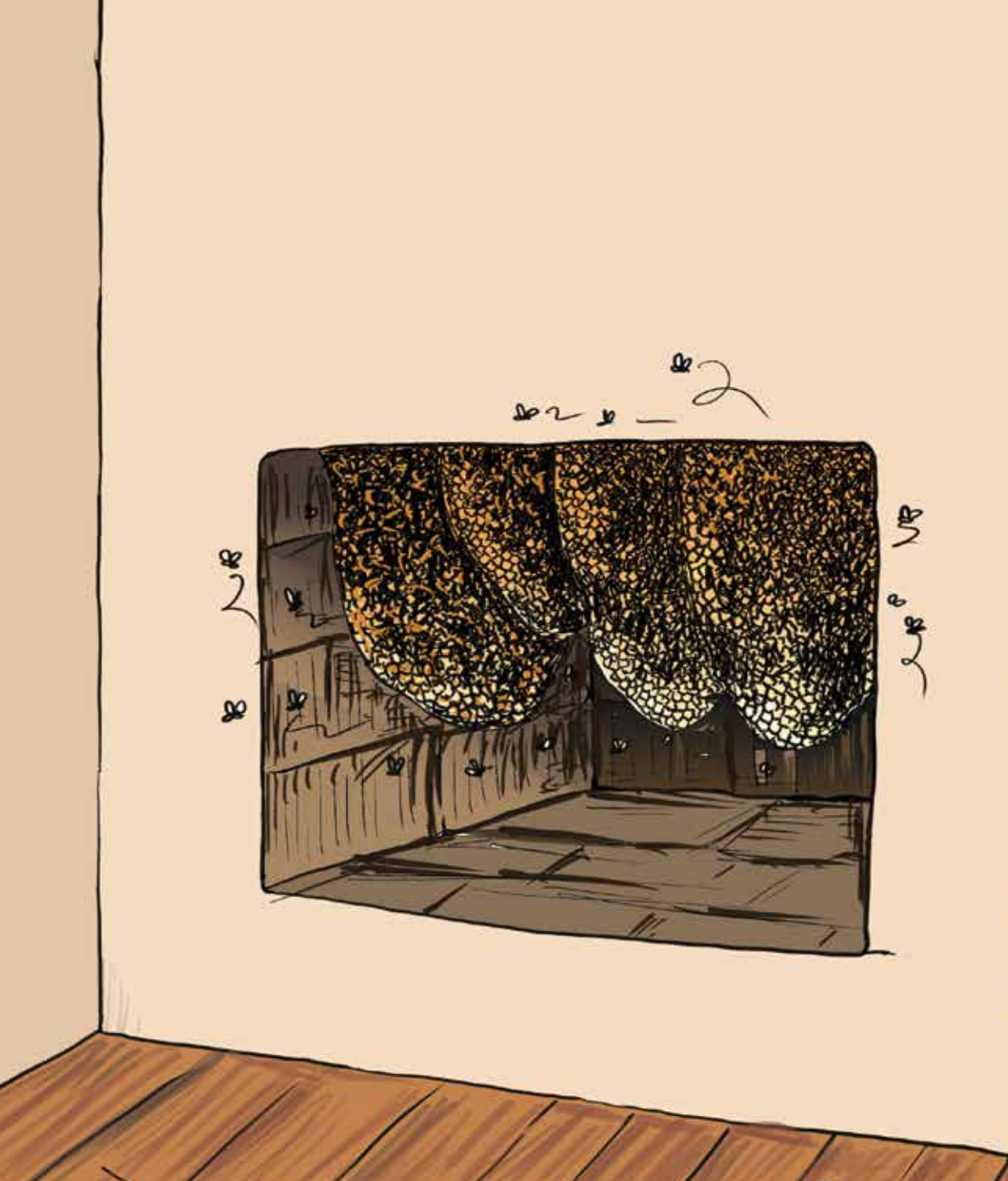




## 4 Traditional log hives



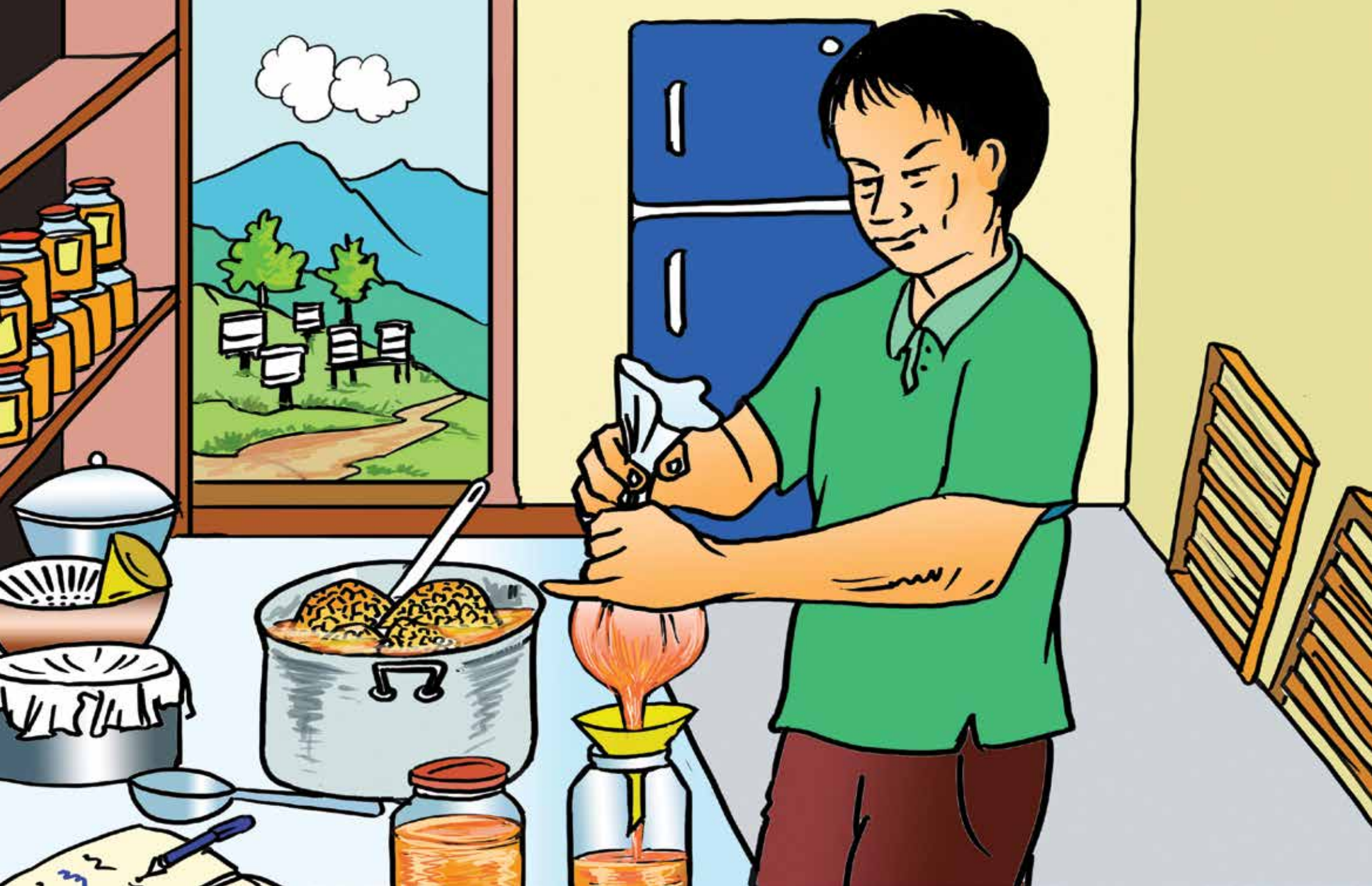




## 5 Traditional wall hives







## 6 Traditional method of honey squeezing







## 7 Traditional packaging of honey







## 8 Individual selling/trading of honey in the village







## 9 Consumption of honey in the village







## 10 Improved beehives



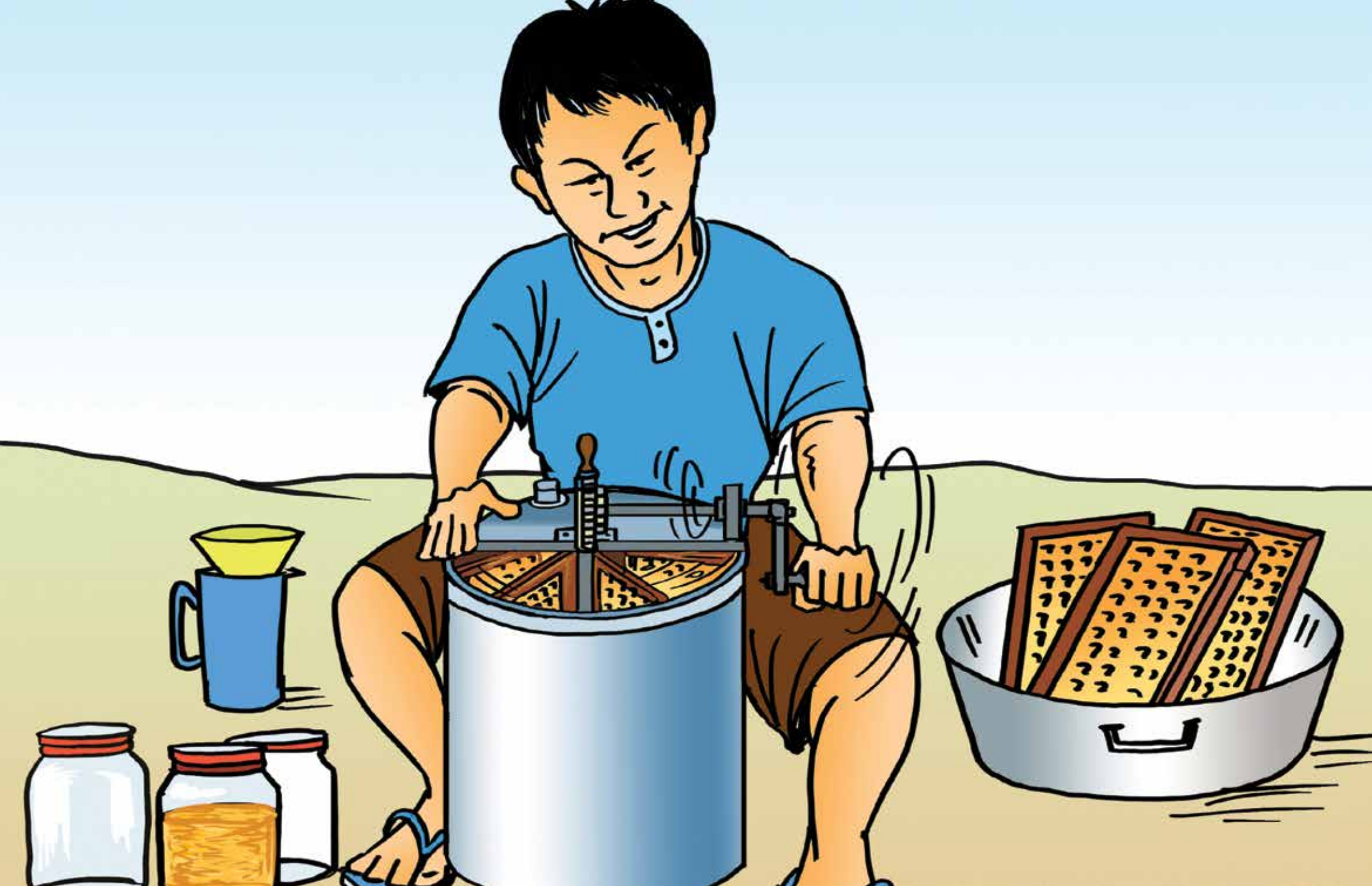




## 11 Beekeeping training







## 12 Use of honey extractor







## 13 Groups equipped with containers, labels and hygienic packaging







## 14 Sale of honey in market







## 15 Access to bank and microfinance by group





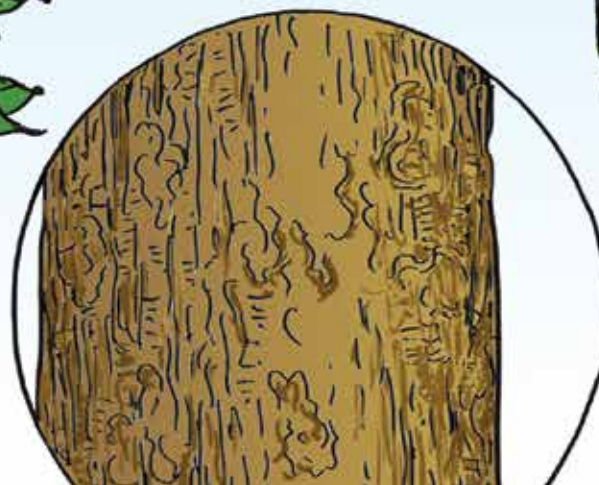
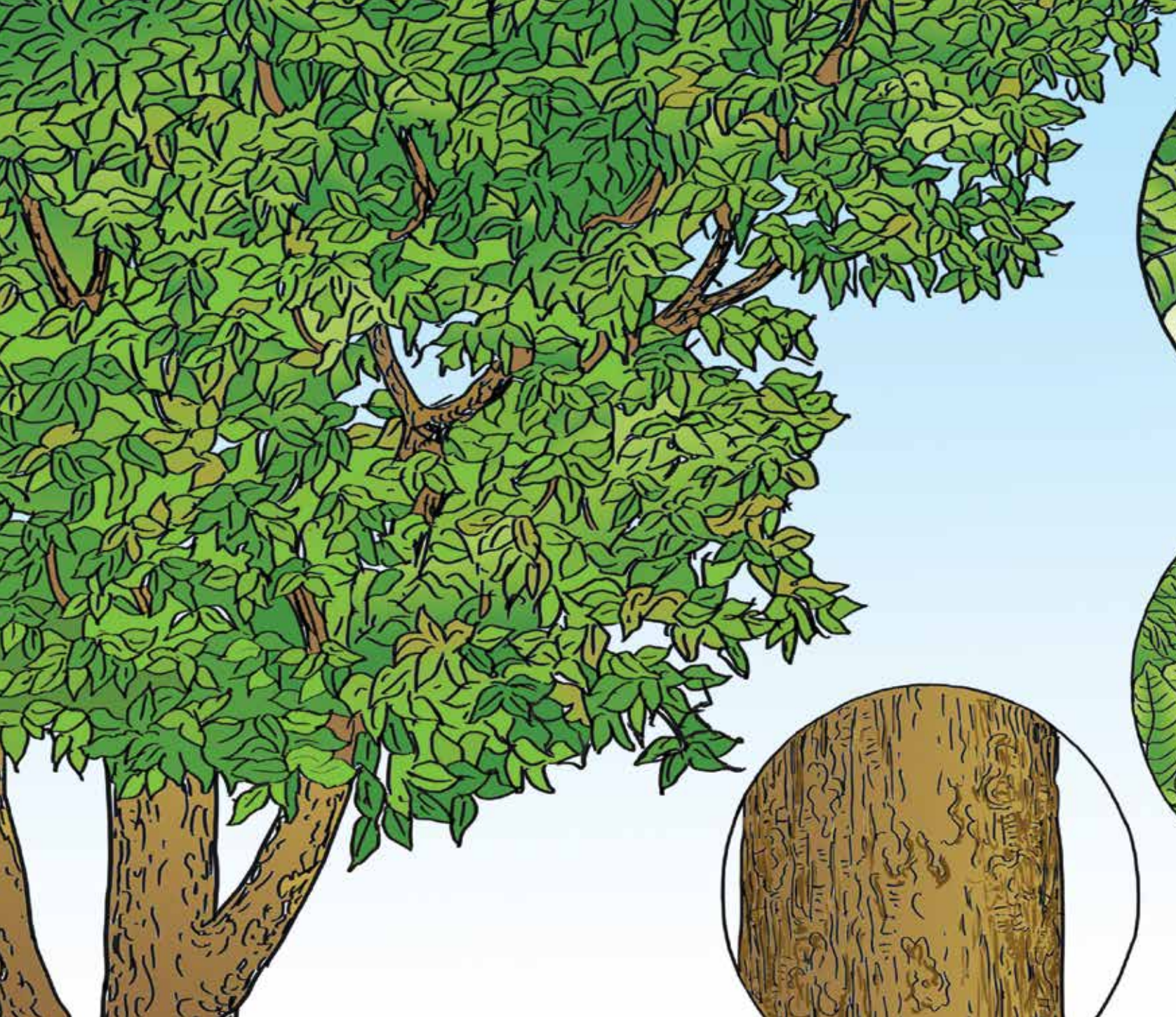




## 16 Landscape with chyura trees









## 17 Chyura tree with details of leaves, seeds and bark









## 18 Farmer lops chyura tree for fodder









## 19 Collecting chyura seeds







## 20 Storing seeds







## 21 Boiling seeds



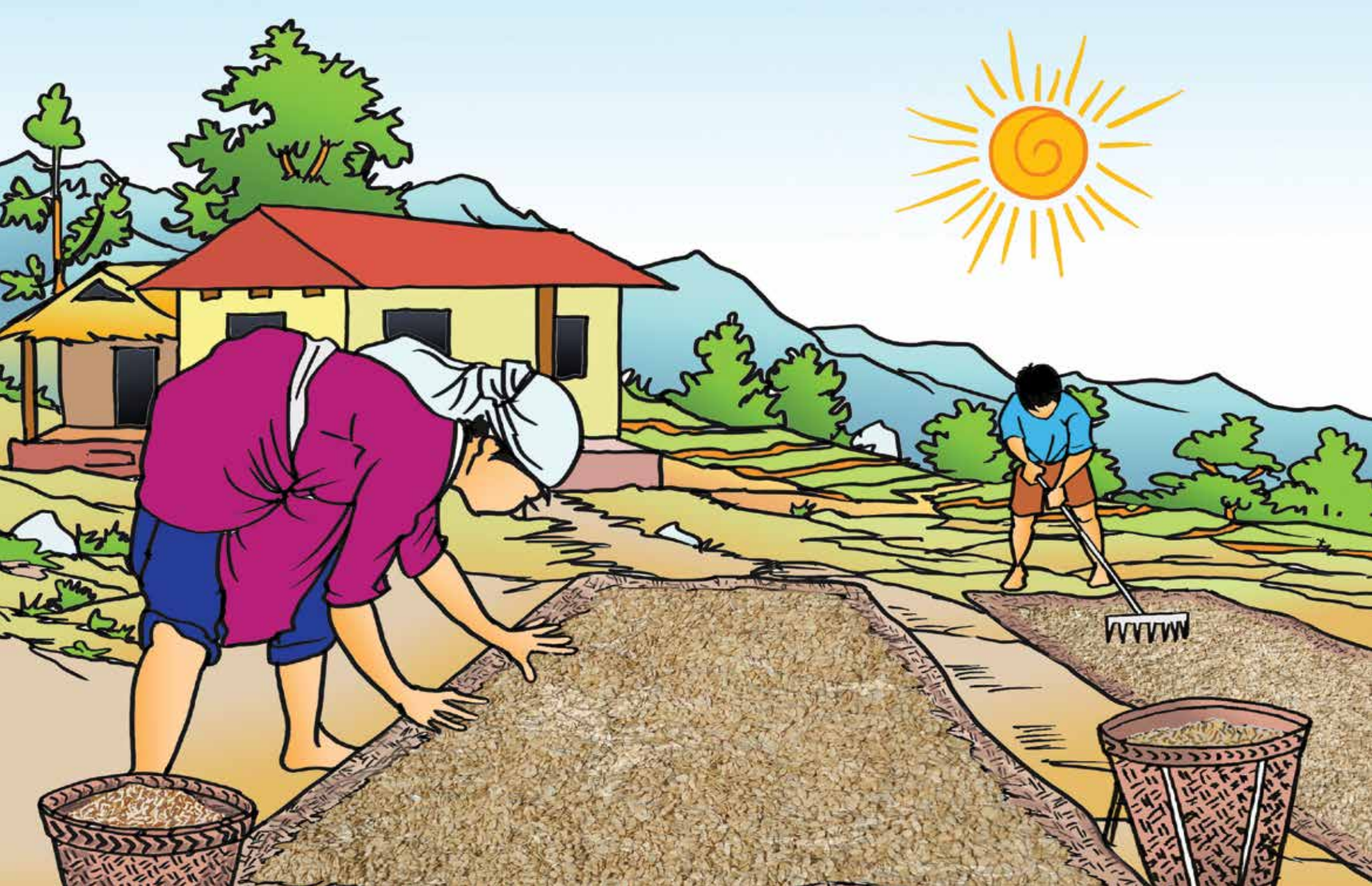




## 22 Shelling seeds







## 23 Drying seed kernels in the sun







## 24 Roasting seed kernels on fire







## 25 Extracting oil using oil expeller







## 26 Heating oil with butter milk to clarify and improve the quality







## 27 Household consumption of chyura butter









## 28 Farmers sit together to discuss formation of SHG



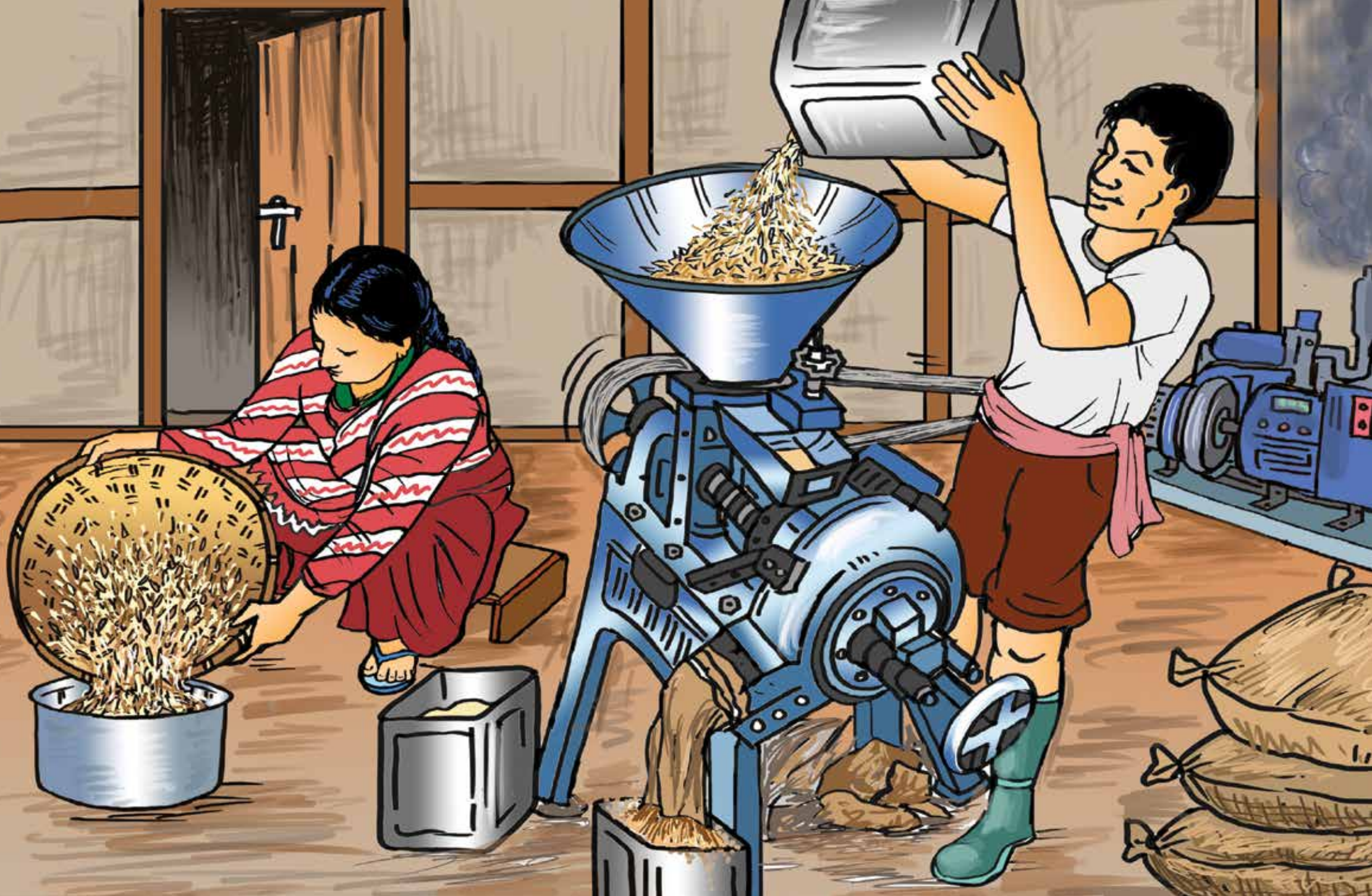




## 29 Self-help group sits together to agree on rules







## 30 Use of decorticator for seed shelling







## 31 Soap making training







## 32 Branding and packaging







### 33 Chyura products being sold at market in town







## 34 Access to bank account

