





1 Fully grown yarshagumba

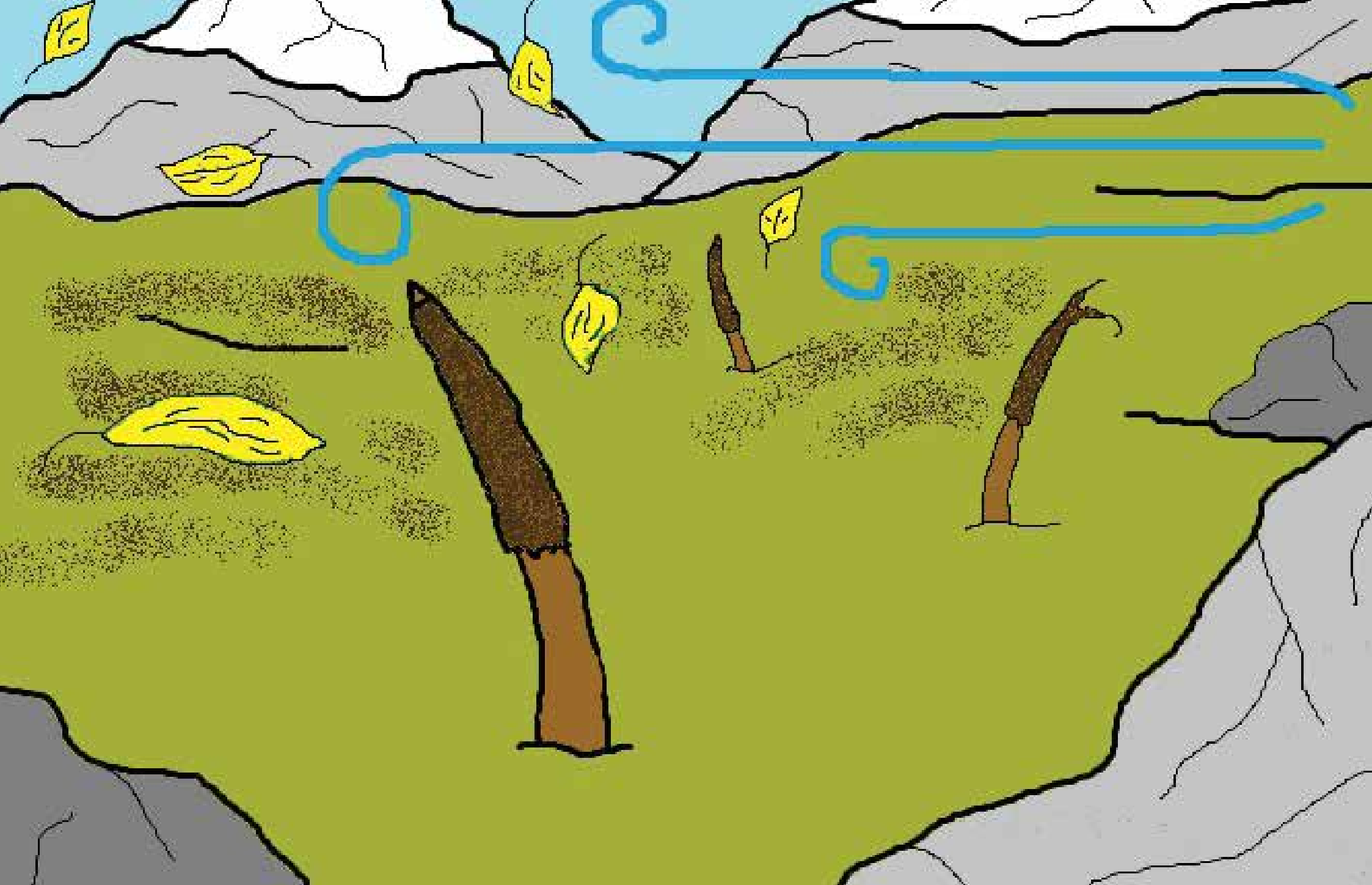







2 Unharvested, mature yarshagumba







3 Wind spreads the spores of unharvested, mature yarshagumba







4 Caterpillar in the ground





A



5 Fully grown moth







6 Eggs of the moth



D





7 Pupa of the moth





8 High-altitude grassland





9 White rhododendron bushes on a mountain slope





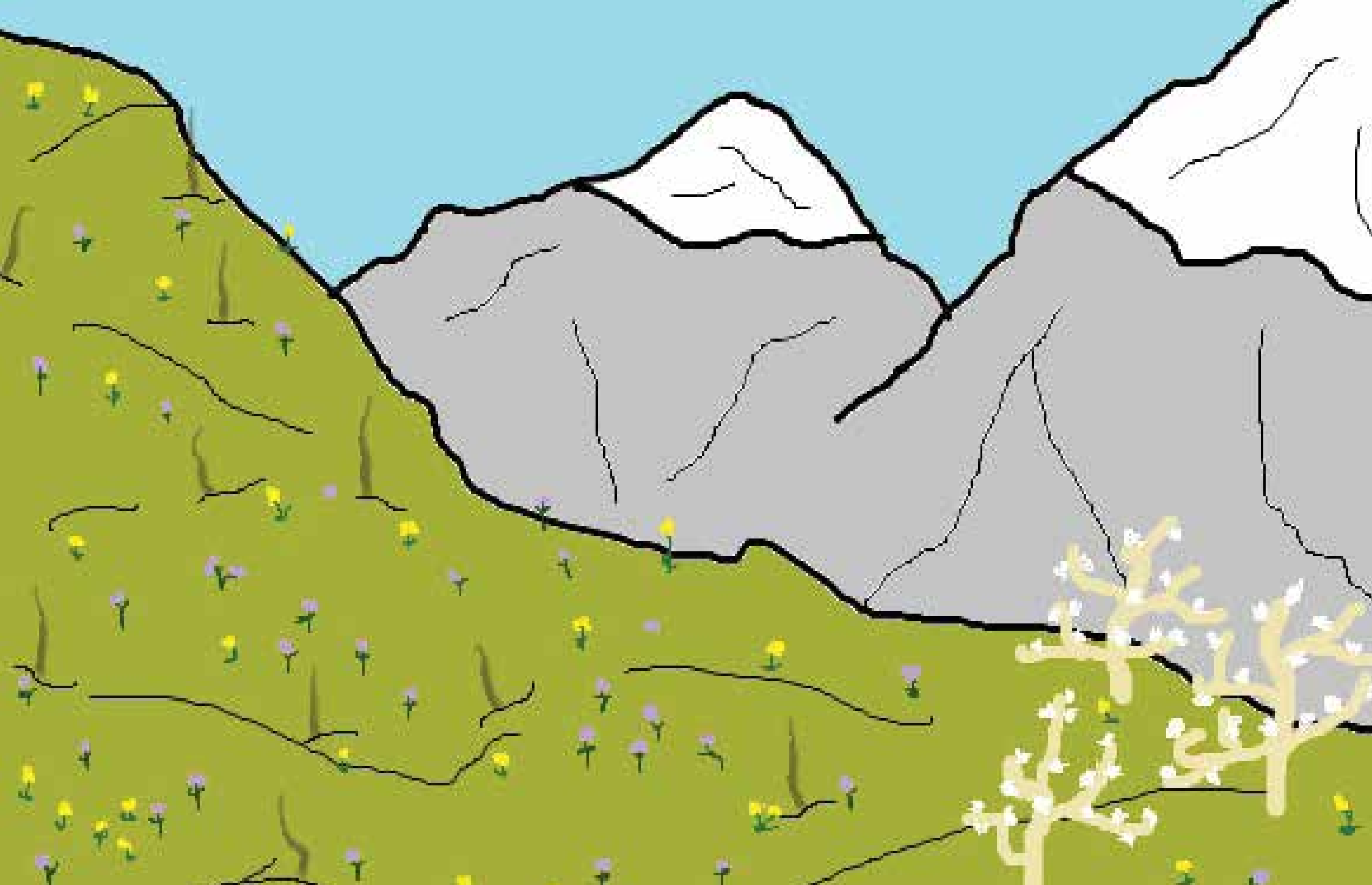
10 Shrubland located below high altitude grasslands and above forests





11 Thick forest at lower altitudes







12 Plentiful yarshagumba in a healthy environment





13 Yarshagumba collectors' composite with clear signs of deforestation







14 Yarshagumba collectors' composite at a lower altitude





15 Landscape littered with waste and no yarshagumba

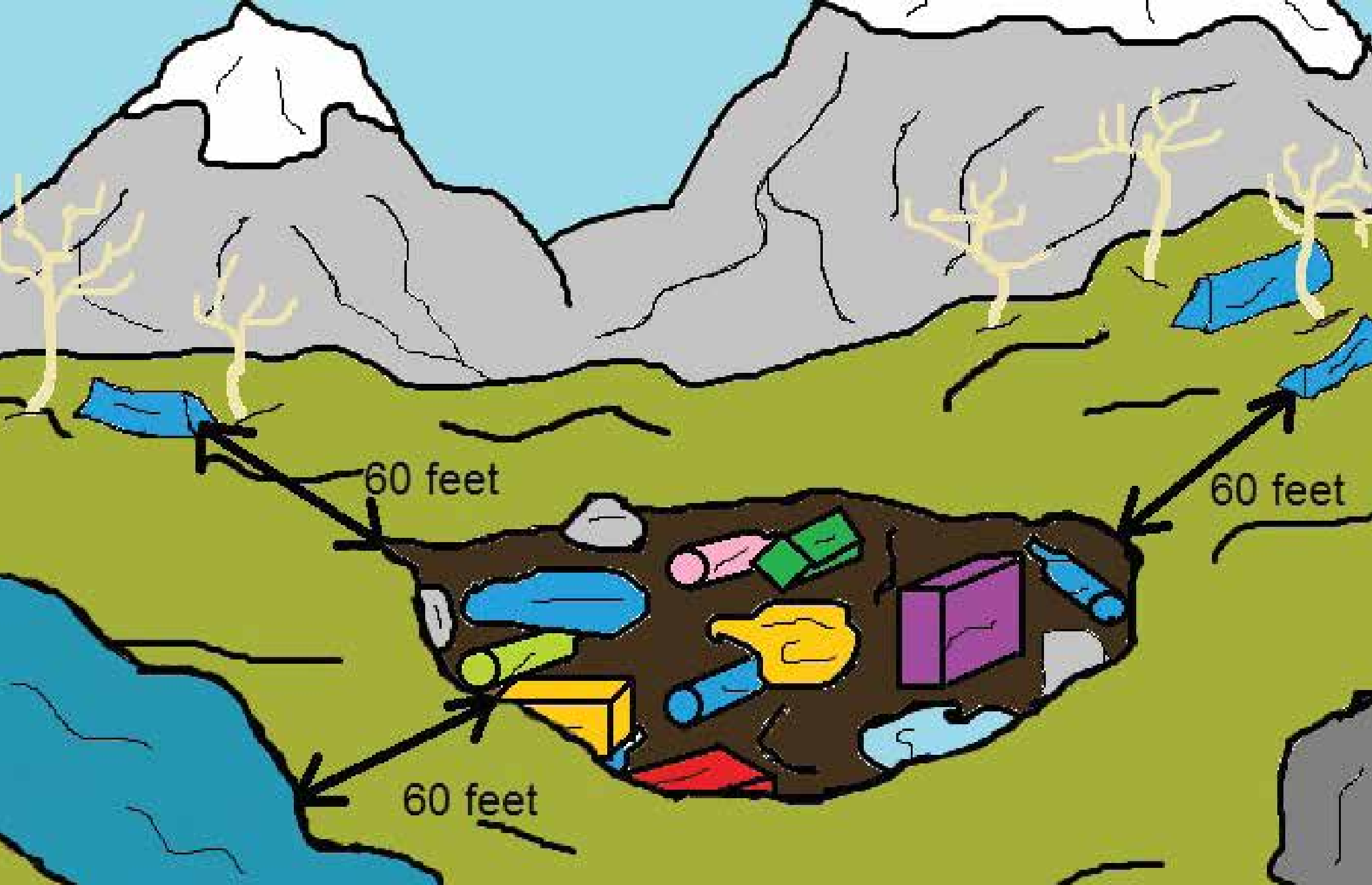







16 Sparse yarshagumba in a degraded environment







17 Waste pit dug at least 60 feet away
from tents and the nearest water source

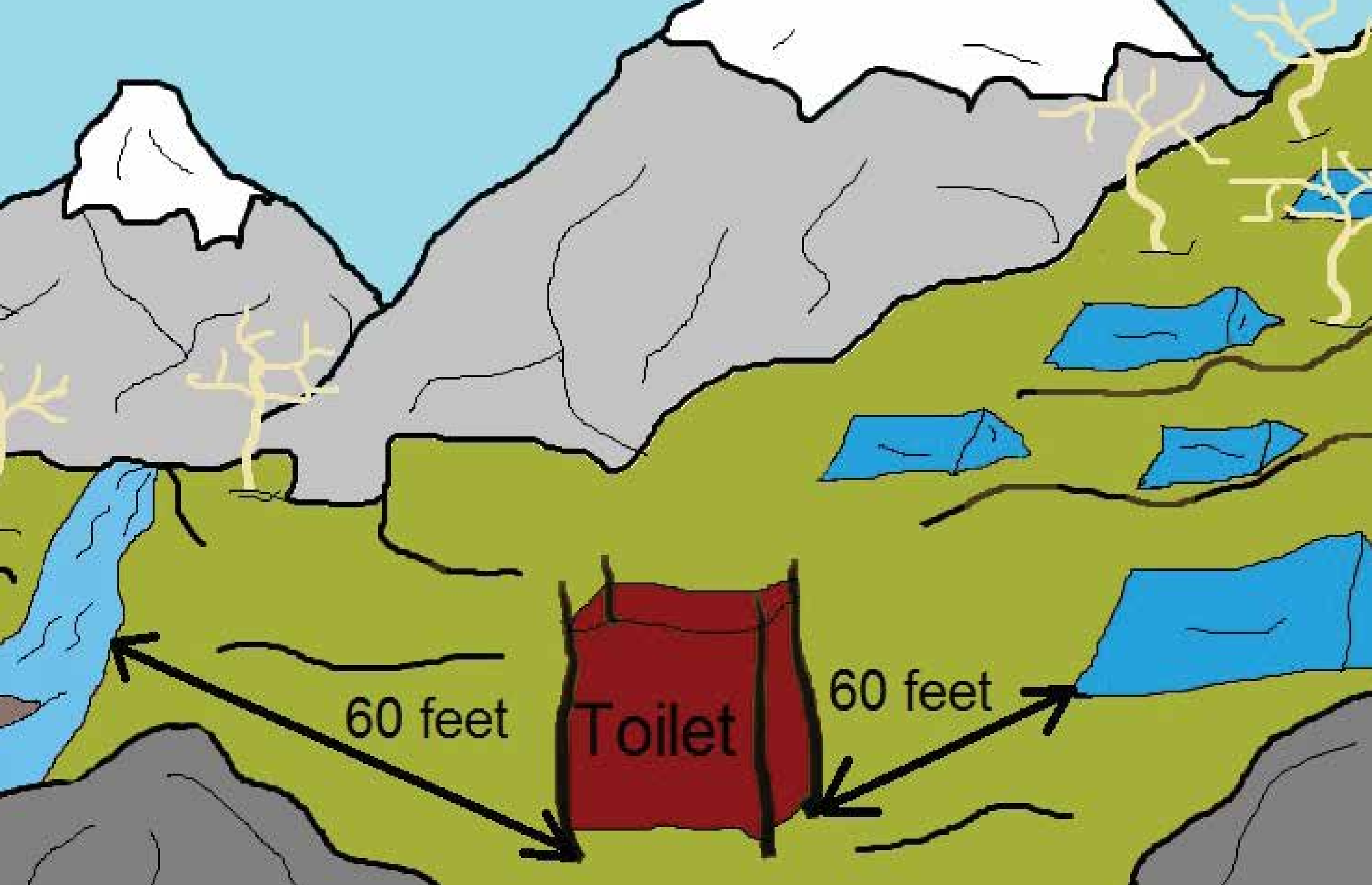






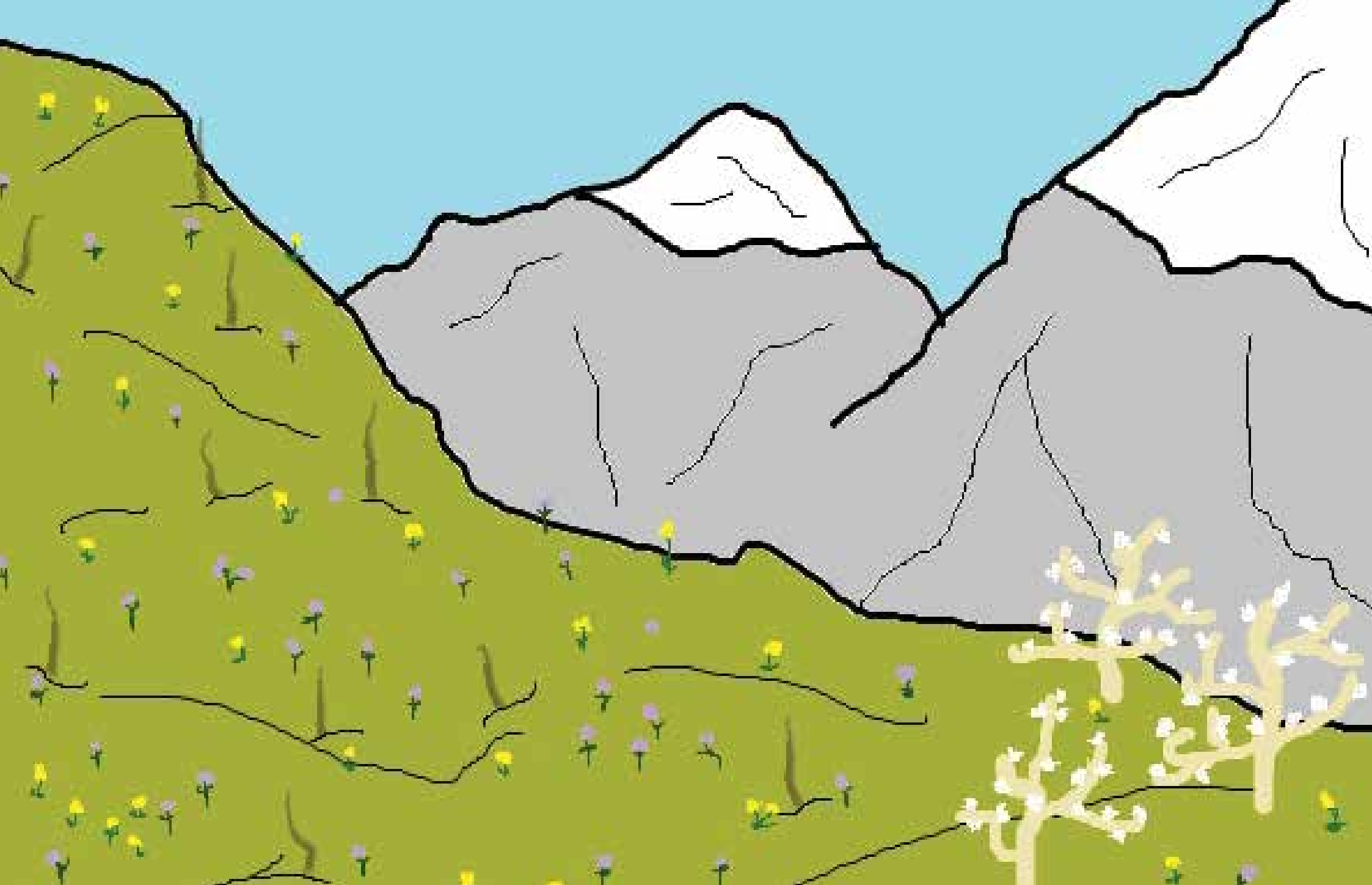
18 Dead wood collected at lower altitudes and/or LPG and kerosene cookers used for fuel





19 Toilet installed at least 60 feet away
from tents and the nearest water source







12 Plentiful yarshagumba in a healthy environment

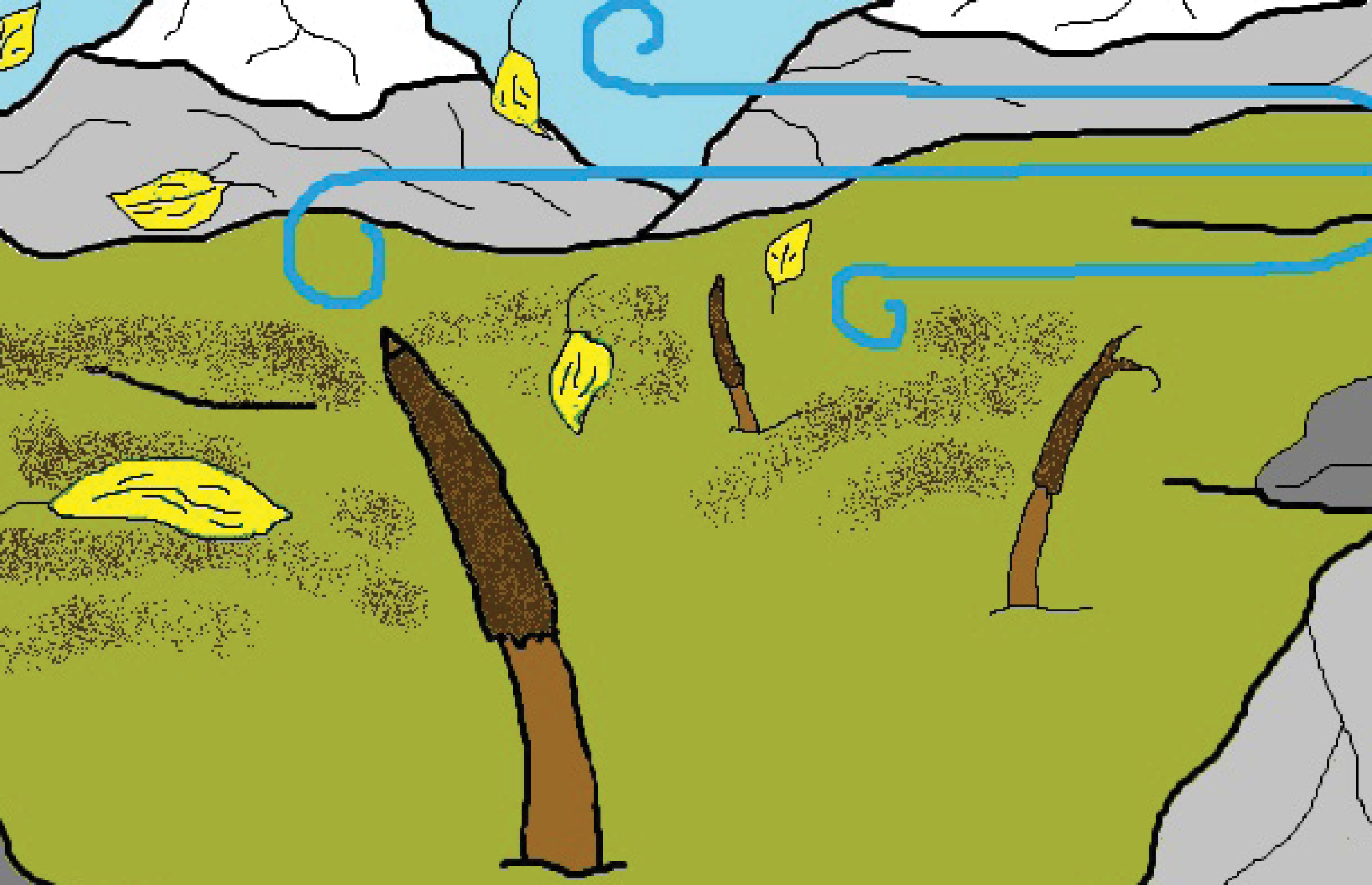







2 Unharvested, mature yarshagumba

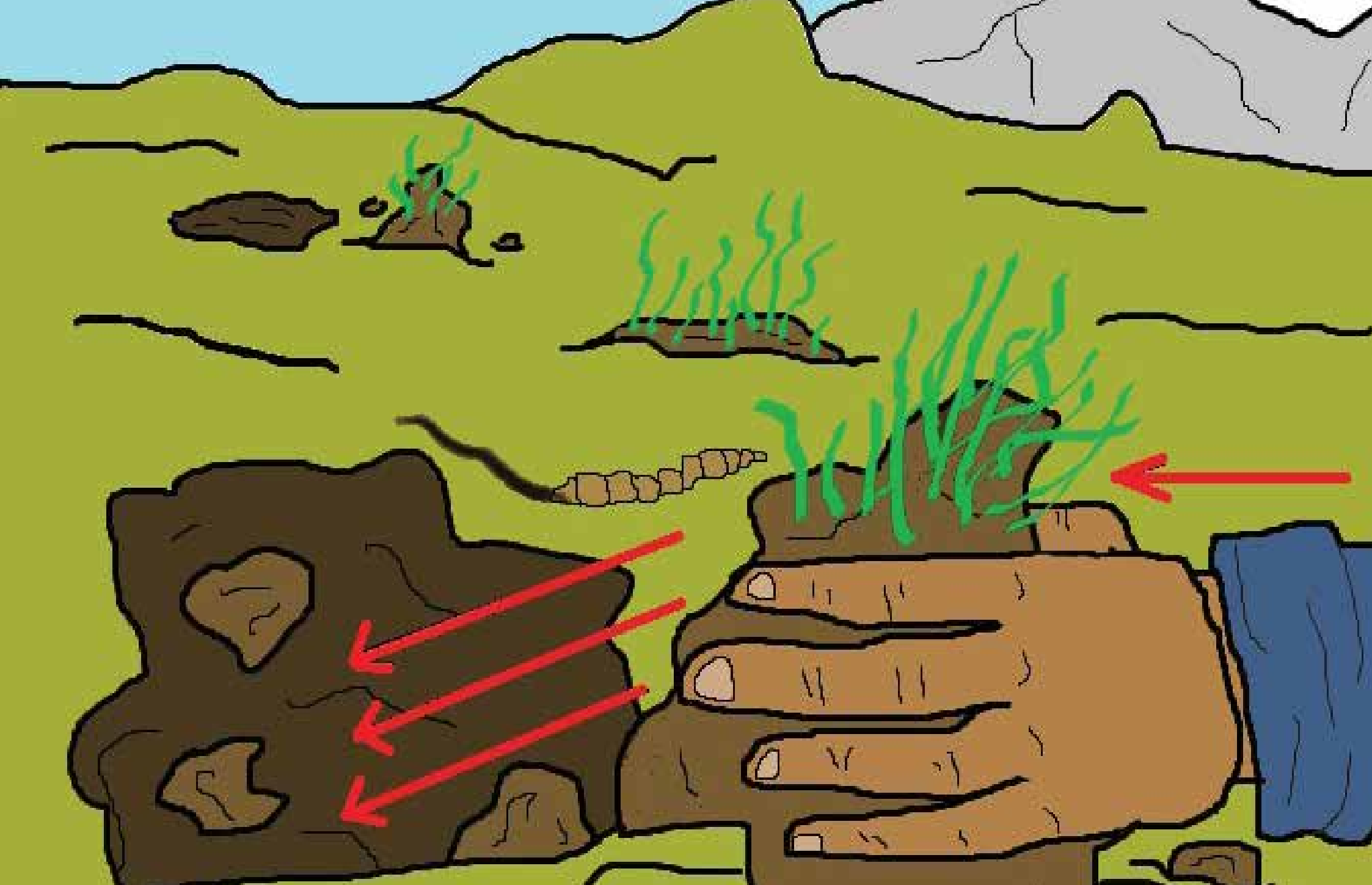






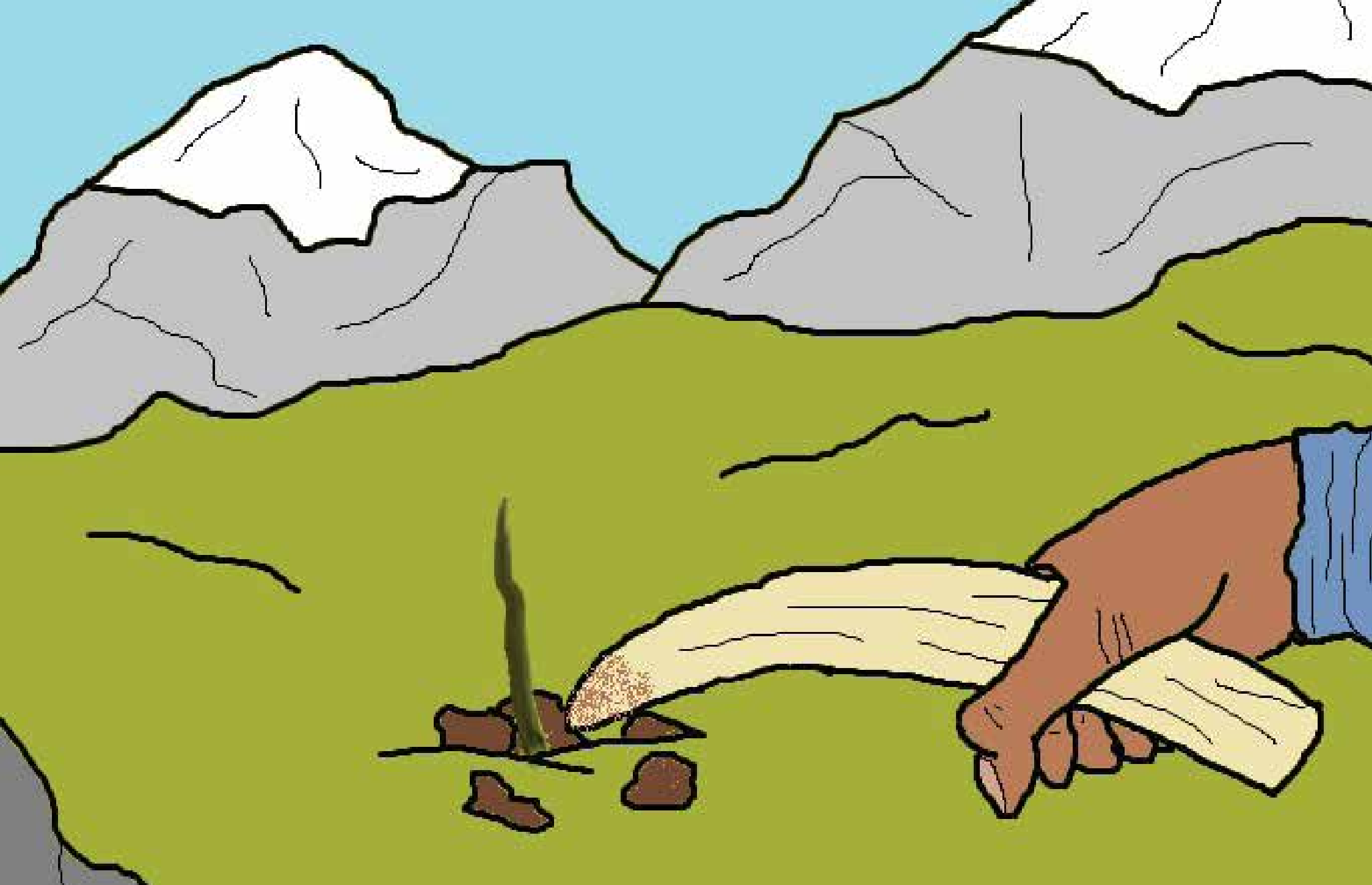
3 Wind spreads the spores of unharvested, mature yarshagumba





20 An upturned chunk of soil with grass attached is placed back in the hole

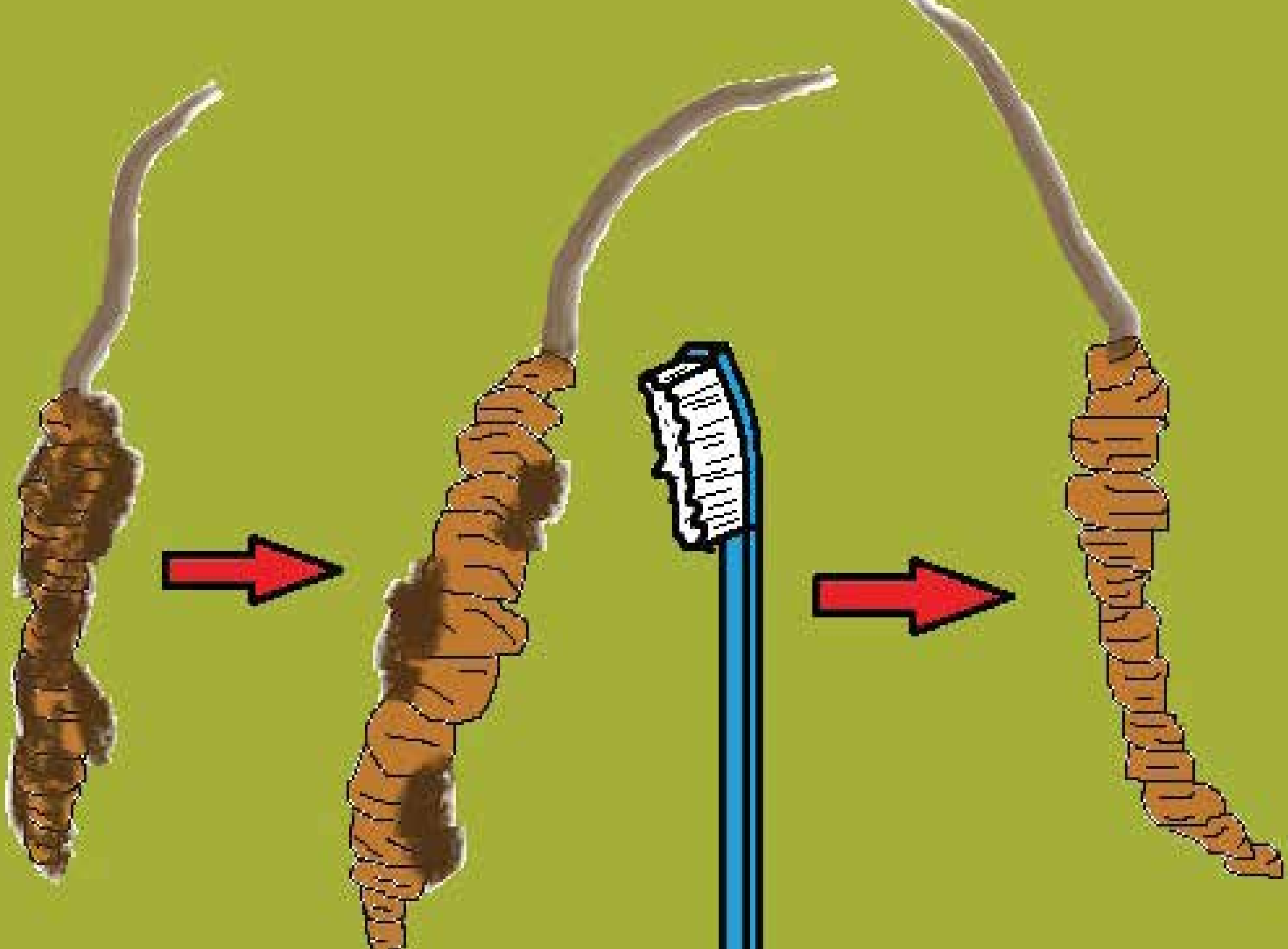






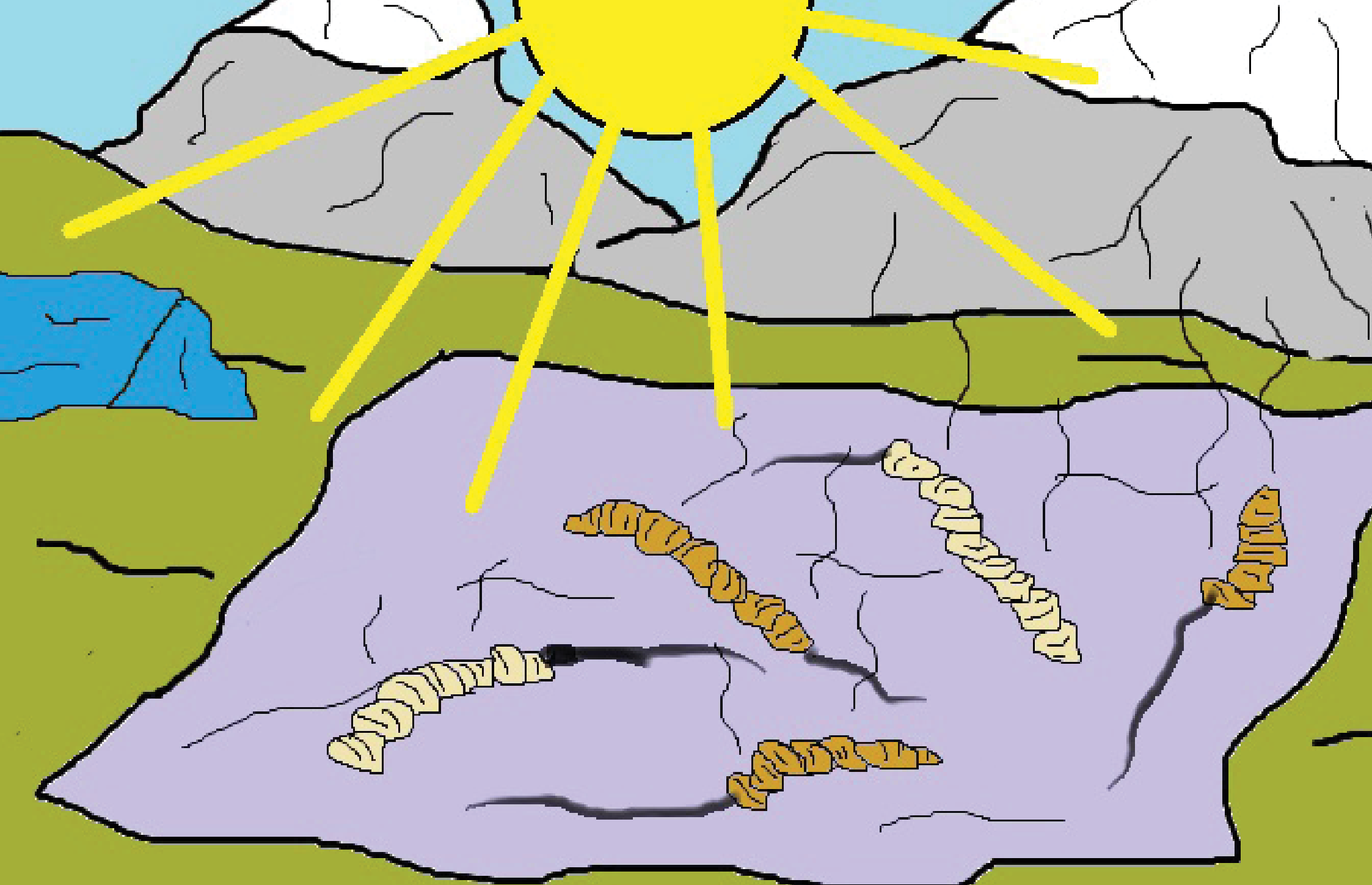
21 Small tools are used to dig out yarshagumba





22 Soil is removed from yarshagumba
with a soft brush

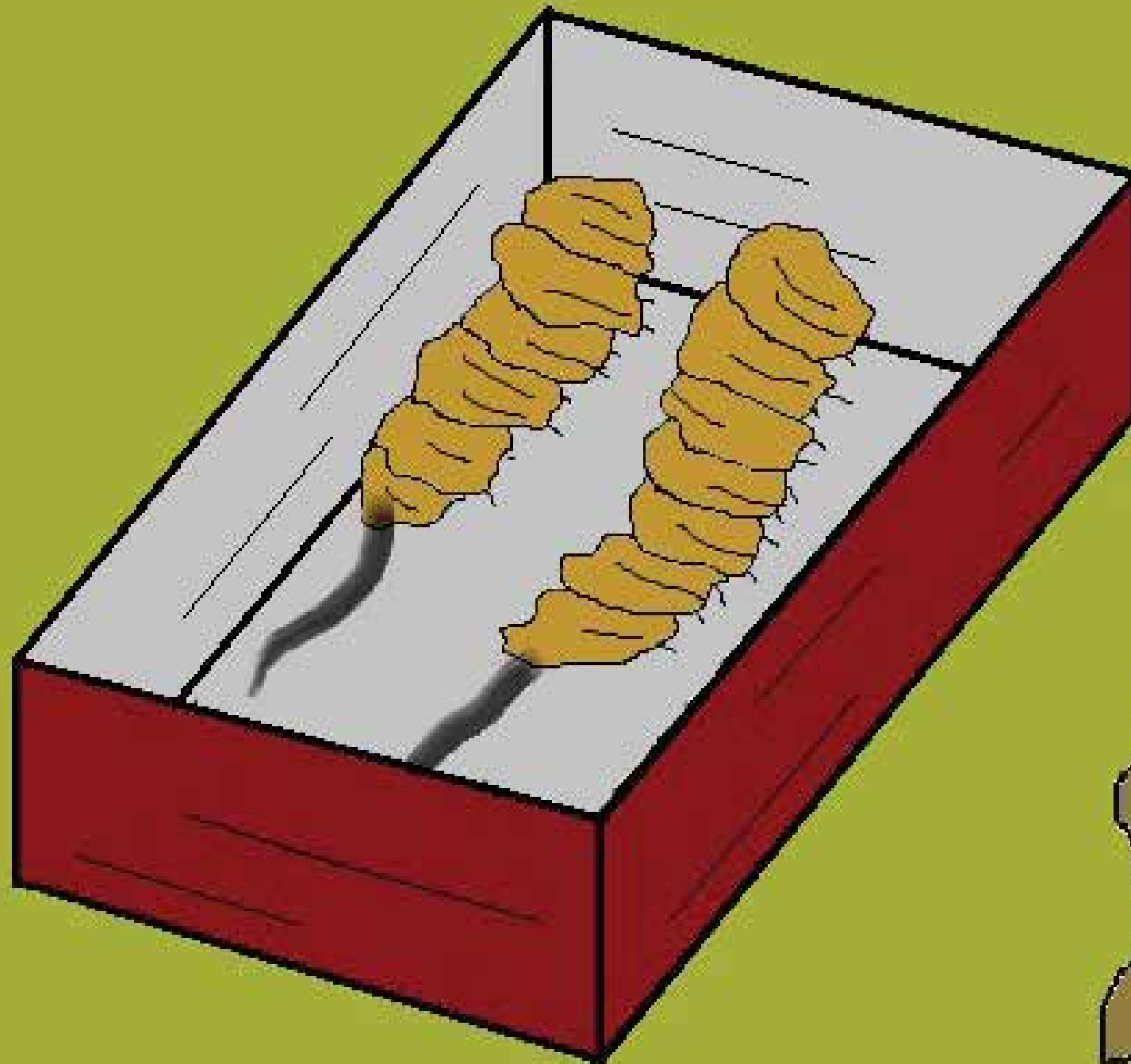






23 Freshly harvested yarshagumba
are spread out on a blanket in the
sun to dry







24 Dried yarshagumba is stored in a small, solid box with barley to prevent moulding





25 Community members from different backgrounds discuss regulations, rights, and responsibilities





26 Community and government authorities discuss regulations, rights, and responsibilities together





27 Communities learn about yarshagumba management regulations and best practices





नेपाल सरकार



वन तथा भू-संरक्षण मन्त्रालय

राष्ट्रिय निकुञ्ज तथा वन्यजन्तु संरक्षण विभाग

अपि नाम्पा संरक्षण क्षेत्र कार्यालय, दार्चुला

फोन नं. : ०९३-४२०४९७

क्र.सं.....

यासागुम्बा संकलन परिचय-पत्र

कलर फोटो

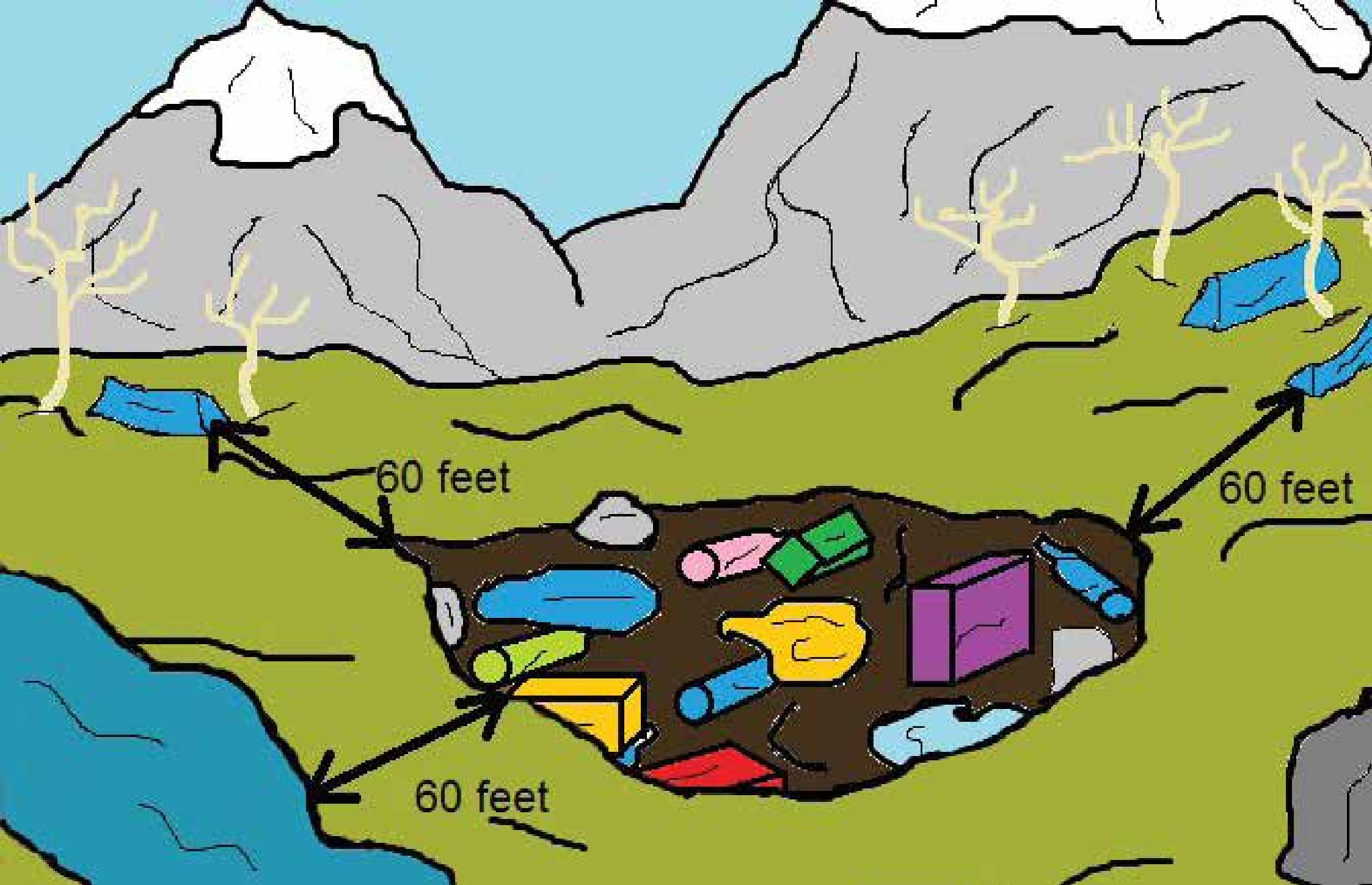
नाम :


स्थायी ठेगाना : जिल्ला

गा. वि.स./न.पा.....वार्ड नं.....टोल/गाउँ

28 Official yarshagumba collector ID card from Nepal







17 Waste pit dug at least 60 feet away
from tents and the nearest
water source





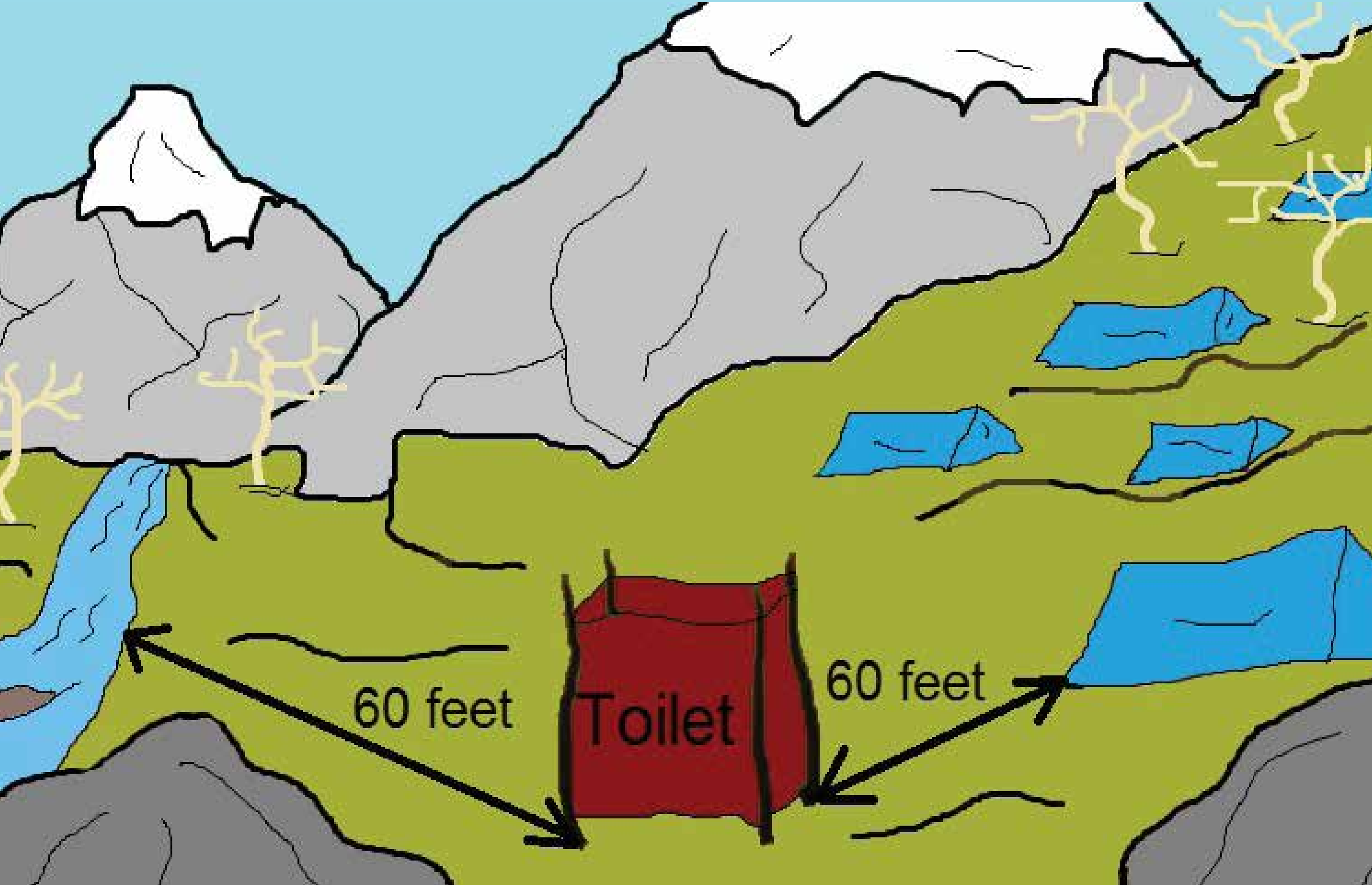


18 Dead wood collected at lower altitudes
and/or LPG and kerosene cookers
used for fuel



ICIMOD







19 Toilet installed at least 60 feet away from tents and the nearest water source





29 Good behaviour should be promoted
and the consumption of alcohol
and drugs and gambling regulated

