

# Himalayan Adaptation, Water and Resilience (HI-AWARE) Research on Glacier and Snowpack Dependent River Basins for Improving Livelihoods



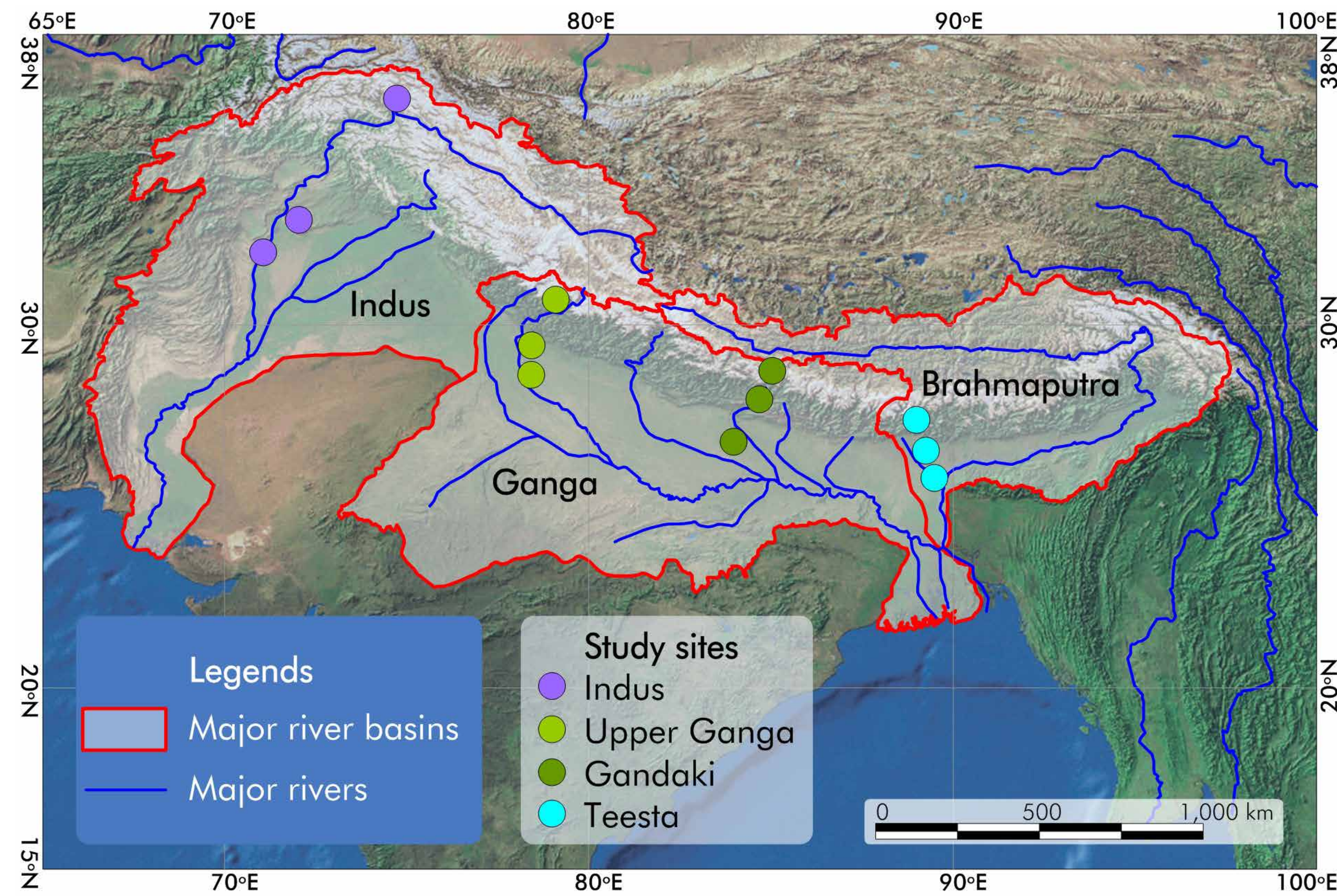
HI-AWARE, one of four consortia of the Collaborative Adaptation Research Initiative in Africa and Asia (CARIAA), is conducting high-calibre research and pilot activities, capacity building, and policy engagement on climate resilience and adaptation in the mountains and flood plains of the Indus, Ganges, and Brahmaputra river basins.

Its overall goal is to contribute to enhanced climate resilience and adaptive capacities of the poor and vulnerable women, men, and children living in these river basins by leveraging research and pilot outcomes to influence policy and practice to improve their livelihoods.

## Study Basins

HI-AWARE is implementing its Work Packages (see HI-AWARE Programme Design) in 12 sites in the Indus, Upper Ganga, Gandaki and Teesta river basins (Map).

Apart from conducting research on water, energy, food security, human health, water-induced hazards and extreme events, it is also in the process of testing adaptation measures in observatory labs in these sites and designing adaptation pathways for out-scaling and up-scaling.



## Consortium Members

- The International Centre for Integrated Mountain Development (ICIMOD), lead organization
- The Bangladesh Centre for Advanced Studies (BCAS)
- The Energy and Resources Institute (TERI)
- The Climate Change, Alternative Energy, and the Water Resources Institute of the Pakistan Agricultural Research Council (CAEWRI-PARC)
- Alterra-Wageningen University and Research Centre (Alterra-WUR).

HI-AWARE is supported by

- The UK's Department for International Development (DFID)
- Canada's International Development Research Centre (IDRC)

## For further information on HI-AWARE please contact:

Philippus (Flip) Wester, Principal Investigator and Project Leader  
philippus.wester@icimod.org

Anjal Prakash, Consortium Coordinator  
anjal.prakash@icimod.org

[www.icimod.org/hi-aware](http://www.icimod.org/hi-aware)



## HI-AWARE Programme Design

