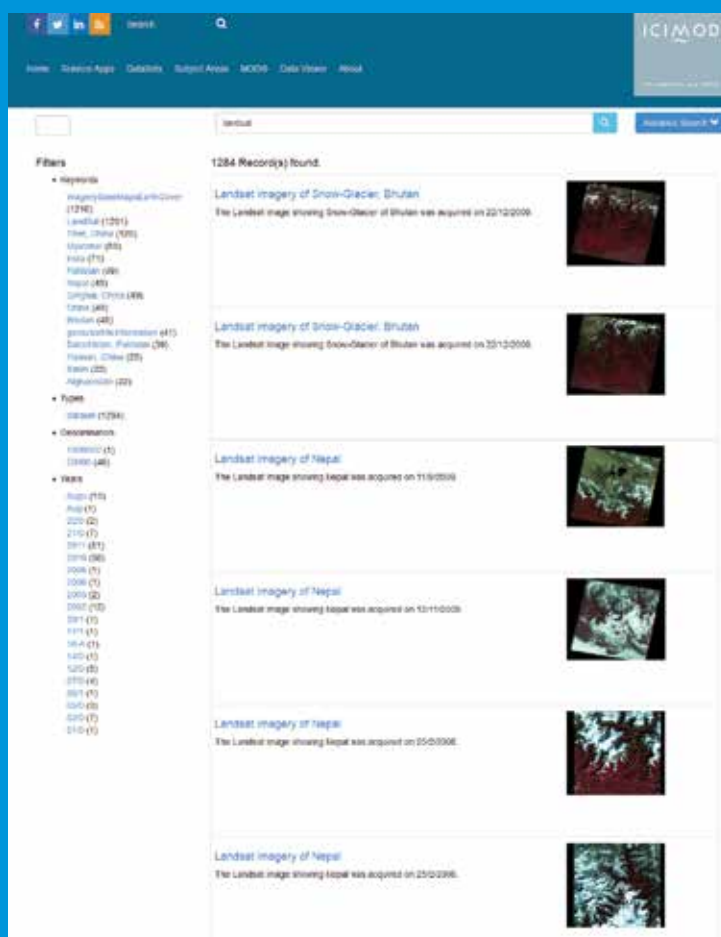


Regional Database System

ICIMOD

FOR MOUNTAINS AND PEOPLE

As an inter-governmental regional learning and knowledge centre, ICIMOD believes that access to timely and high-quality data is essential to promote and accelerate learning on the challenges facing mountain ecosystems and their people; to enable independent research and scientific enquiries; to catalyse the development of knowledge products and innovations that improve the wellbeing and livelihoods of mountain communities; and to empower critical and urgent decision making and efforts in times of regional humanitarian and emergency crisis. In this context, ICIMOD has established a Regional Database System (RDS) that acts as a central data repository for different thematic areas in the Hindu Kush Himalayan (HKH) region and provides easy access to these data through a web-based portal.



The RDS Portal

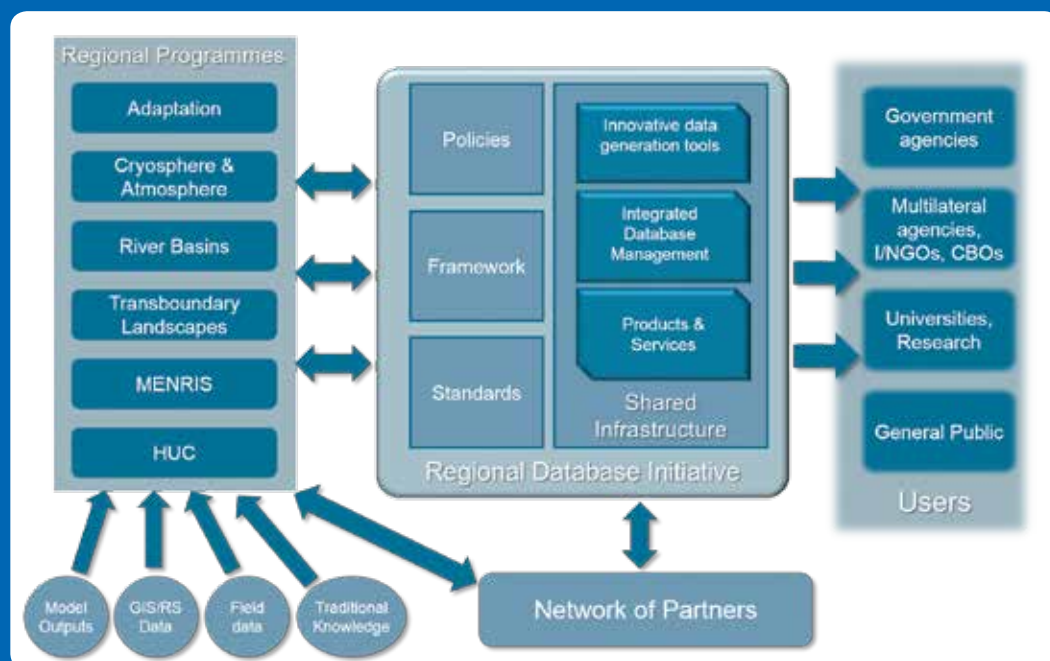
The RDS portal (<http://rds.icimod.org>) provides a gateway to data stored in ICIMOD's RDS. It allows users to search metadata by providing free search text. The users can also perform an advanced search based on title, abstract, keyword, category, or within a user-defined geographic extent. The search result shows a list of metadata consisting of title, abstract, and thumbnail, and the users can narrow down the search results using provided filters. Users can also view the detailed metadata of any data found in the search results.

All of ICIMOD's published datasets are available for download after simple registration and acceptance of the data use agreement.

The Regional Database Framework

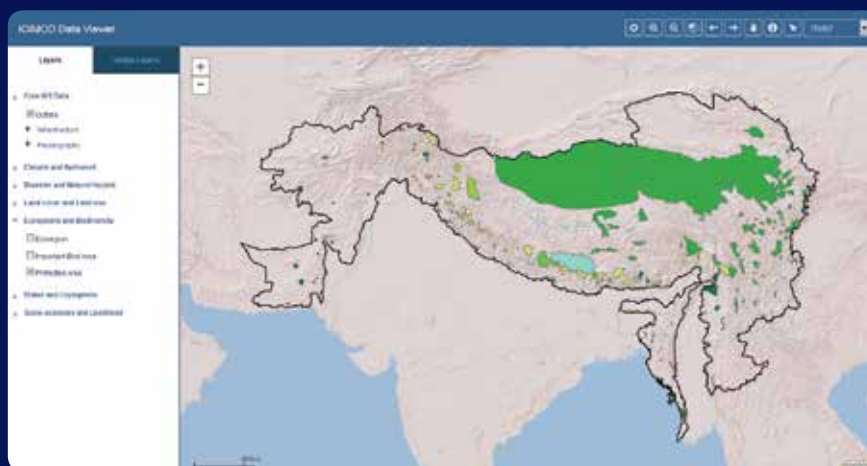
The Regional Database Initiative under ICIMOD's Mountain Environment Regional Information System (MENRIS) programme is responsible for developing and maintaining the RDS,. The Regional Database Initiative has put in place ICIMOD's Data Sharing Policy, data and metadata standards, and necessary hardware and software infrastructure. The Data Sharing Policy facilitates data sharing in the region and among the global community, enabling data its use beyond the original research, and has been aligned with the philosophy of open and free access to scientific information and knowledge.

The data stored in the regional database are primarily contributed by ICIMOD's initiatives housed under various regional programmes. The initiatives generate data on their own or in collaboration with partners and are made available to various kinds of users such as government and non-governmental agencies, researchers, and the general public.



Data Viewer Application

A Data Viewer application has been developed to allow visualization of geospatial and tabular data as dynamic maps and charts. In addition to viewing data layers for a given geographic area (e.g. regional, country, landscape, river basin, etc.), users can also create their own custom map with the selected data layers of their interest.



For further information contact

Birendra Bajracharya birendra.bajracharya@icimod.org
Sudip Pradhan sudip.pradhan@icimod.org

ICIMOD gratefully acknowledges the support of its core donors: the Governments of Afghanistan, Australia, Austria, Bangladesh, Bhutan, China, India, Myanmar, Nepal, Norway, Pakistan, Switzerland, and the United Kingdom.

© ICIMOD 2014
International Centre for Integrated Mountain Development
GPO Box 3226, Kathmandu, Nepal
Tel +977-1-5003222 Email info@icimod.org Web www.icimod.org

Prepared by ICIMOD Publications Unit, November 2014