

Godavari Butterflies

ICIMOD



FOR MOUNTAINS AND PEOPLE



Karen Conniff



Mahendra Singh Limbu

Butterflies are showy and immediately eye catching, but even among the butterflies there are some that are so small or camouflaged that they are easily overlooked. They appear on warm sunny days to nectar and mud-sip next to streams or flowering plants. They lay eggs on specific host plants that they hunt for by flitting from one plant to the next until they find the right one. Butterflies can be crop pests as larvae; adults are pollinators, migratory and live from weeks to months depending on the climate and species.

Within ICIMOD and the surrounding forest areas there are many types of trees and plants that the butterflies feed and lay eggs on. Unfortunately, due to forest fires, human encroachment and deforestation many diverse forest habitats have disappeared.

Thanks to Mahendra this booklet is more concise and includes more species. He has been chasing butterflies for many years and often works as a nature guide. His photos are labeled with the initials MSL.

Enjoy this second edition of the Butterfly guide as you walk through ICIMOD.

Godavari Butterflies

This basic guide is organized by family groupings. The purpose is to make it easier to identify the butterflies sighted at ICIMOD Knowledge Park in Godavari.

If you have comments, want to add a new photo or found errors in this booklet please contact:

Karen Conniff – karoconniff@gmail.com

Tailed Punch



Family

Nemeobiidae or

Punches and Judies



Striped Punch – inner wing



Tailed Punch – inner wing



Striped Punch – outer wing



Tailed Punch – outer wing



Punchinello



Dark Judy male



Orange Punch



Mixed Punch

Family

Acraeidae or

Costers



Yellow Coster Male – outer wings



Yellow Coster



Yellow Coster Female



Yellow Coster Female Laying Eggs



Orange Oak Leaf – Pokhara

Family

Nymphalidae or
Sailor, Pansy, Lacewing



Sergeant Major



Bhutan Sergeant



Himalayan Sergeant



Yellow Sailer



Great Hockey-stick Sailer



White Commodore



Orange Staff Sergeant



Creamy Sailer



Cruiser



Eastern Courtier



Tabby



Red Admiral



Red Lacewing



Golden Emperor



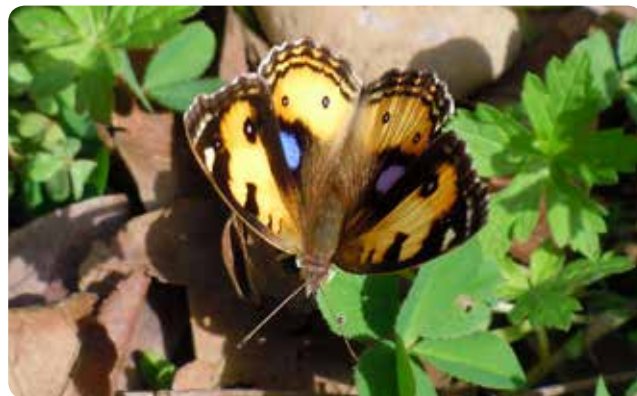
Popinjay



Lemon Pansy



Chocolate Pansy



Yellow Pansy



Peacock Pansy



Grey Pansy



Blue Pansy



Spotted Jester



Rustic

MSL



Common Map

MSL



Painted Lady – inner wing



Blue Admiral – inner wing

MSL



Painted Lady – outer wing



Blue Admiral – outer wing



Grey Count



Great Eggfly (female)



Common Commadore



Pale Green Sailor



Bronze Duke



Grand Duchess



Green Duke



Common Jester



Blue Baron



Indian Fritillary



Large Sliver Stripe



Indian Fritillary female

WSM

Family

Papilionidae or
Swallowtails



Paris Peacock



Common Peacock



Spangle



Golden Birdwing Female



Tailed Jay



Red Helen



Lesser Mime



Common Mormon



Chinese Windmill



Common Windmill



Six-bar Swordtail

MSL



Common Red Breast

MSL



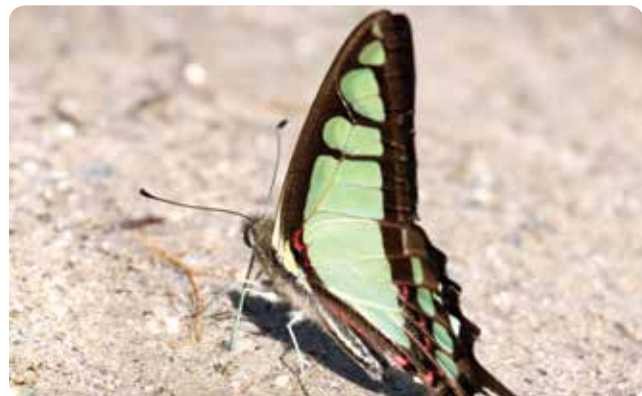
Lime Swallowtail



Common Bluebottle



Veined Jay



Glassy Bluebottle

Family

Lycaenidae or

Blues



Common Hedge Blue



Plains Cupid



Blue Tit



Metallic Cerulean



Bispot Royal – inner wing



Tailless Plushblue

MSL



Bispot Royal – outer wing



Pale Hedge Blue

MSL

MSL



Walnut Blue



Broadtail Royal – inner wing female

MSL

MSL



Chinese Hairstreak



Broad Tailed Royal – outer wing female

MSL



Golden Sapphire – inner wing



Purple Sapphire – inner wing



Golden Sapphire – outer wing



Purple Sapphire – outer wing



Long-banded Silverline



Yellow-disc Oakblue



Water Hairstreak



Hooked Oakblue



Common Evening Brown

Family

Satyridae or

Browns



Common Fourring



Himalayn Fivering

TSM



Tiger Brown



Common Woodbrown

MSL



Dark Evening Brown



MSL

Lilacine Bushbrown

MSL



Wood Masons Bushbrown



MSL

Pallid Argus

MSL



Common Bushbrown



MSL

Spotted Palmfly

MSL



Scarce Woodbrown



Striated Satyr



Common Indian Crow

Family

Danaidae or

Tigers and Crows

MSL



Plain Tiger (male)



Glassy Tiger

MSL



Dark Blue Glassy Tiger

MSL



Common Tiger

MSL



Blue Glassy Tiger



Chestnut Tiger



Striped Blue Crow Female



Striped Blue Crow (male)

MSL



Indian Cabbage White

Family

Pieridae or

Whites



Small Grass Yellow



Three Spot Grass Yellow



Dark Clouded Yellow



Pale Clouded Yellow



Yellow Jezebel



Bath White female

MSL



Pale Jezebel



Hill Jezebel



Chocolate Albatross



Great Blackvein



Chocolate Albatross female



Lemon Emigrant



Indian Cabbage White



Red-base Jezebel



Indian Cabbage White Female



Red Spot Jezebel

Tytlers Multispotted Flat



Family

Hesperiidae or

Skippers



Common Small Flat



Tytler's Multispotted Flat



Restricted Demon



Spotted Snow Flat

MSL



Purple Swift



Yellow Spot Swift



Indian Dart



Hooked Awlwing

MSL



Hairy Angle



MSL

Large Branded Swift

MSL



Sikkim Palm Redeye



MSL

Mussorie Bush Bob

Butterfly Reference Guides

Smith, Colin. 2010 Lepidoptera of Nepal. Published by *Himalayan Nature*.

Smith, Colin and Himalayan Map House. 2011. *A pocket Guide to Butterflies of Nepal*. Published by Himalayan Map House.

Smith, Colin 2006 *Illustrated Checklist of Nepal's Butterflies* by Walden Book House, Kathmandu

van der Poel, P. and T. Wangchuk. 2007. *Butterflies of Bhutan. Mountains, hills and valleys between 800 and 3000m*. Royal Society for Protection of Nature (RSPN). Thimphu, Bhutan.

Web

<http://www.ifoundbutterflies.org>

This is an internet-based and peer-reviewed resource devoted to Indian butterflies.

Field Notes



Tailed Jay



Ka ni ke



International Centre for Integrated Mountain Development

GPO Box 3226, Kathmandu, Nepal

Tel +977 1 5003222 **Fax** +977 1 5003299

Email info@icimod.org **Web** www.icimod.org