



**SERVIR**  **HIMALAYA**

FOR MOUNTAINS AND PEOPLE

# SERVIR-Himalaya

Connecting Space to Village

SERVIR-Himalaya improves environmental management and climate change responses by helping governments and other stakeholders integrate Earth observation and geospatial technologies into decision making.

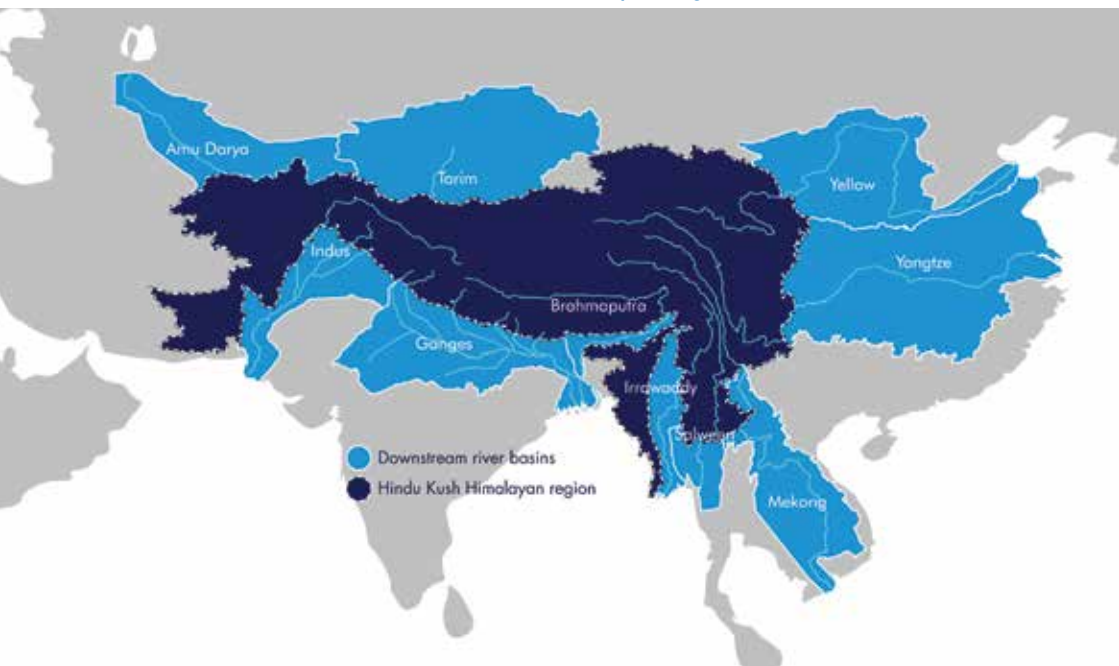




SERVIR-Himalaya is a joint initiative of the United States Agency for International Development (USAID), National Aeronautics and Space Administration (NASA), and ICIMOD. Driven by the motto 'Connecting Space to Village', SERVIR-Himalaya works as a regional resource centre in the Hindu Kush Himalayan region by developing relevant geospatial applications and creating an enabling environment for the use of geospatial methods and tools to support decision making in the region.

SERVIR-Himalaya seeks to engage stakeholders beyond the scientific community to ensure that scientific developments have an impact on the lives of people in communities across the Hindu Kush Himalayas. The initiative has played a key role in providing integrated and innovative solutions for the generation, use, and sharing of knowledge and data on the region's mountain environments.

### The Hindu Kush Himalayan Region



## Generating and sharing knowledge to improve decision making

The applications developed by SERVIR-Himalaya are designed to help decision makers respond to environmental challenges in the HKH region. SERVIR's crosscutting tools also help ICIMOD achieve greater impact through its other regional programmes.



## Available tools

- Agricultural Monitoring to Support Food Security
- Forest Fire Detection and Monitoring System
- Multi-Scale Forest Biomass Assessment with Satellite Remote Sensing
- Geo-enabled Information for Disaster Risk Reduction
- Flood Forecasting using JASON-2 Satellite
- Land Cover Change Mapping
- Decadal Glacier Dynamics

## Strengthening regional partners

Strengthening the skills of partners in the region in the use of geospatial information and technology remains a core objective of the SERVIR-Himalaya initiative. The initiative provides technical support and conducts customized trainings and exchange opportunities according to the needs of its regional partners.



## Engaging youth

Today's youth are the next generation of policy makers, scientists, and development practitioners. SERVIR-Himalaya engages youth through internships programmes, youth forums, and hackathons focussed on using Earth observation technologies to develop tools and applications that support informed decision making on climate change issues.

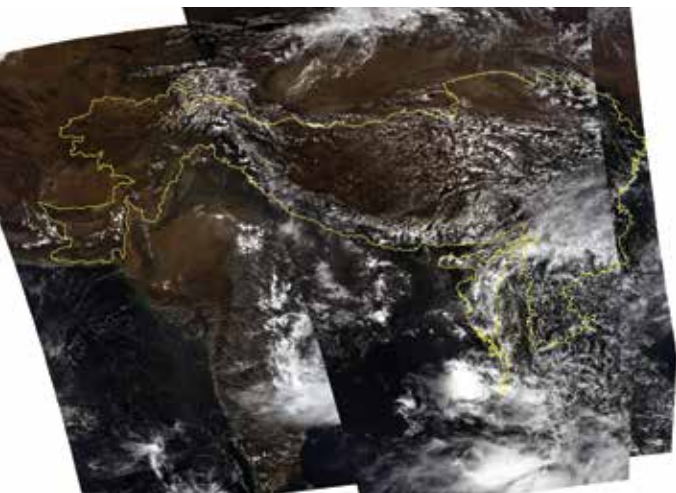


## SERVIR Hubs



### Creating the Connection: Space to village

SERVIR-Himalaya uses data from earth observing satellites, ground-based data, and advanced geospatial technology in innovative ways to enable evidence-based decision making in the region. It provides partners across the region with access to high-quality information systems and services pertaining to integrated mountain development. Some of its products include satellite and other geospatial datasets, interactive online maps, decision support tools for priority areas, interactive visualizations, and educational products targeted for use by various groups, including youth.



Satellite image of the HKH region as captured by the MODIS (Moderate Resolution Imaging Spectroradiometer) receiver at the ICIMOD headquarters. MODIS data is captured four times a day by NASA's Terra and Aqua satellites as they pass over the region.

The MODIS receiver and acquisition system feeds key environmental data into SERVIR Science Applications to support environmental decision making.

### For further information contact

**Birendra Bajracharya** [birendra.bajracharya@icimod.org](mailto:birendra.bajracharya@icimod.org)

**Photos:** Alex Treadway, Choidup Zangpo, Jitendra Bajracharya, Karen Conniff

ICIMOD gratefully acknowledges the support of its core donors: the Governments of Afghanistan, Australia, Austria, Bangladesh, Bhutan, China, India, Myanmar, Nepal, Norway, Pakistan, Switzerland, and the United Kingdom.

© ICIMOD 2014

International Centre for Integrated Mountain Development

GPO Box 3226, Kathmandu, Nepal **Tel** +977-1-5003222

**Email** [info@icimod.org](mailto:info@icimod.org)

**Web** [www.icimod.org](http://www.icimod.org)