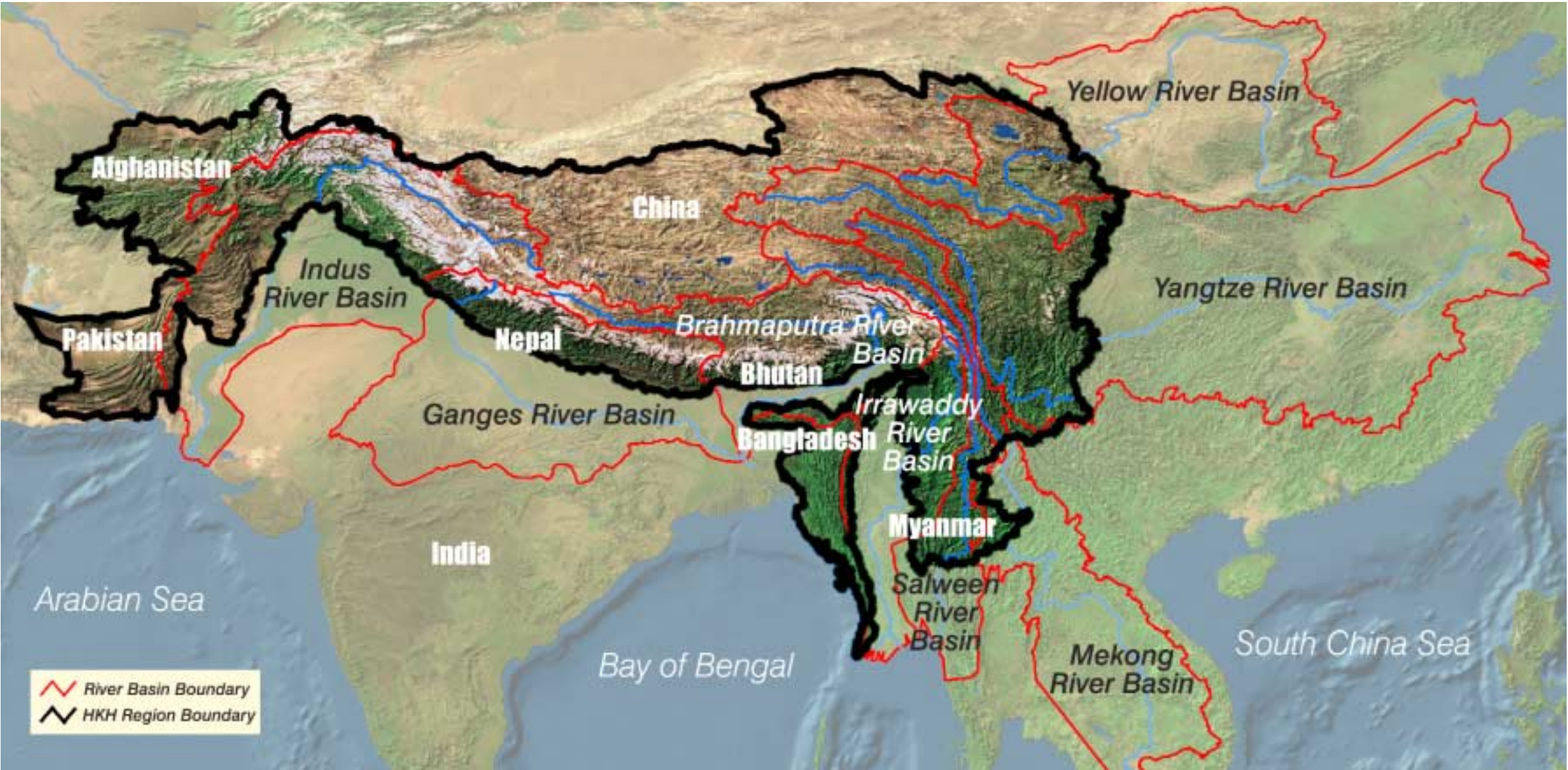


The greater Himalayan region served by ICIMOD extends for 3,500 km from Afghanistan in the west to Myanmar in the east sustaining over 150 million people. The HKH people are disproportionately vulnerable, poor, marginalised and cut off from access to markets and social services. Mountain areas of the HKH and the world are home to most of today's conflicts. Yet promising new opportunities exist for sustainable, community-based natural resource management, new products and incomes, hazard mitigation, social inclusion and empowerment, long-term sustainability, and effective communication and knowledge sharing.

The HKH Region



Regional Collaborative Partner Countries



Photos: D. Miller, N. Saville; Map source ESRI Data and Maps



International Centre for Integrated Mountain Development

4/80 Jawalakhel, G.P.O Box 3226, Kathmandu, Nepal
Telephone: +977 1 525313, Fax: +977 1 524509, 536747
email: icimod@icimod.org.np

www.icimod.org

- www.southasianfloods.org
- www.mtnforum.org/apmn
- www.prempanda.net
- www.hkh-friend.net
- www.icimod-gis.net
- www.mtnforum.org
- www.pardyp.org

THE MOUNTAIN LEARNING AND KNOWLEDGE CENTRE

As an applied research and development institution in the heart of the Himalayan region, ICIMOD's strategy is based on working with its partners to identify, test, adapt and communicate opportunities for overcoming mountain vulnerabilities and transforming them into greater security and sustainability for poor and marginalised mountain peoples. ICIMOD seeks to build on its comparative advantage, as a regionally mandated and grounded mountain-specific institution with a wide network of partners, to serve as a Mountain Learning and Knowledge Centre that identifies and fosters solutions across the mountain world. ICIMOD works to build the cooperative networks and enabling environments through which these solutions can be implemented on a scale that will produce tangible results for the poor and marginalised of the region and beyond.

ICIMOD builds institutional capacities and facilitates the development of mountain policy and regional cooperation through its main functions as a:

- multidisciplinary documentation centre,
- focal point for problem solving by research,
- focal point for training, and
- consultative centre on the sustainable development of mountain natural, human and institutional resources.

NATURAL RESOURCE MANAGEMENT

- ▲ Mountain natural resources – land, water, forests, rangelands, and surface minerals – provide the natural capital upon which all rural mountain livelihoods are based.
- ▲ Approximately 39% of the Hindu Kush-Himalaya consists of pasture, 21% is classified as forest, 11% is protected area, and 5% is agricultural land.
- ▲ Mountain farmers depend upon the integrated use of a variety of privately and publicly owned agricultural lands, forests, pasture, and water to survive.

Programme Focus: Institutional, technological, and policy innovations for community-based management to increase mountain productivity, food security, and biological sustainability

Action Initiatives

- Watershed Management
- Rangeland, Pasture and Livestock Management
- Transboundary Biodiversity Management

The long-term future of mountain regions of the Himalayan area and the world can be sustained by instituting compensatory mechanisms for mountain services to downstream users in return for wise conservation and use of upstream watersheds by mountain people.

AGRICULTURE & RURAL INCOME DIVERSIFICATION

- ▲ Mountains are endowed with natural climatic and environmental advantages for niche products. When these are linked to new and diverse market opportunities, poor mountain people can rise above subsistence levels.
- ▲ Diversified incomes can help reduce dependence on degraded land, forest, and pastures, and provide incentives for their conservation.

Programme Focus: *Specialised mountain agricultural and non-farm products with market linkages that enhance economic security*

Action Initiatives

- High Value Products and Sustainable Agriculture
- Medicinal Plants, Rural Enterprises and Mountain Tourism
- Decentralised Renewable Energy Options

Specialised mountain niche products include honey, wax, and other products from indigenous bees; off-season vegetables; non-timber forest products; medicinal plants and herbs; essential oils; fibres and silks; natural dyes; and other organic products (e.g. saffron, spices, tea, honey).

WATER, HAZARDS & ENVIRONMENTAL MANAGEMENT

- ▲ Six of the world's largest rivers – the Indus, Ganges, Brahmaputra, Mekong, Yangtze, and Yellow River – originate in the greater Himalayan mountains and are vital for South, Southeast, and East Asia.
- ▲ Water sustains agriculture, livestock, household needs, industry, energy, transportation, and all biological life.
- ▲ The storage of water in glacial ice, snow packs, and underground aquifers provides the source of critical low flow in dry seasons for hundreds of millions of people living downstream.
- ▲ Water also creates mountain hazards such as landslides, floods, and severe erosion that have a devastating impact on the lives and property of mountain people and the many millions living below.

Programme Focus: Decreasing the physical vulnerability and increasing the environmental security of mountain peoples and the downstream poor

Action Initiatives

- Water and Floods
- Climate Change and Responses
- Environmental Services

Climate change is causing snow and ice reserves to melt rapidly and natural water storage capacity is becoming reduced with potentially alarming impacts.

CULTURE, EQUITY, GENDER & GOVERNANCE

- ▲ The majority of mountain peoples belong to a large variety of ethnic groups that have been historically marginalised by dominant elites
- ▲ Well over a hundred languages are spoken in the Himalayan region, each one indicative of the rich diversity of cultural heritage.
- ▲ Women, the backbone of most rural mountain economies, still lack fair access to resources.
- ▲ Mountains are home to a disproportionate number of violent conflicts.

Programme Focus: Promotion of equality and empowerment of vulnerable mountain peoples for enhanced social security and reduced conflict

Action Initiatives

- Gender Mainstreaming
- Equity and Rights
- Community Institutions, Decentralisation and Local Governance

Equitable chances for all inhabitants, flexible institutional settings, and good local governance are essential preconditions for sustainable development in mountain areas. Incorporating gender and social equity are thus vital to long-term resource management regimes that avoid permanent conflicts.

POLICY & PARTNERSHIP DEVELOPMENT

- ▲ Most country policies for mountain regions have been developed as extensions of plains' programmes and are frequently inappropriate for mountains
- ▲ ICIMOD's networks of partners have untapped potential for increasing their effectiveness in supporting the adoption of mountain specific policies at provincial, national, regional, and global levels

Programme Focus: Providing policy support and strengthening partnerships and ICIMOD's capacity for collaboration in planning, achieving, and monitoring programme activities

Action Initiatives

- Programme Development and Monitoring and Evaluation
- Policy Development and Advocacy Support
- Partnership Development

Mountain policies need to take into account the qualitative differences in mountain livelihoods, diversified landscapes, and access to markets and decision-making to overcome the greater constraints and take advantage of the unique opportunities afforded by mountains.

INFORMATION AND KNOWLEDGE MANAGEMENT

- ▲ Much information and data are available, but they are not documented or archived in a coordinated fashion and few know how to access them.
- ▲ Inappropriate forms of 'packaging' and channels of delivery means that many people do not receive or understand messages containing information that could transform their lives.
- ▲ New forms of information technology offer possibilities for locating information geographically (GIS), for coordinating documentation on sources, and for reaching dispersed audiences.

Programme Focus: Making mountain information and knowledge accessible and usable to partners, policy-makers and advocates, and development practitioners

Action Initiatives

- Information Management, Communications and Outreach (IMCO)
- Mountain Environment and Natural Resources Information Systems (MENRIS)

Global Secretariat of the Mountain Forum (Hosted Institution)

The Mountain Forum is a global network of networks, comprising of individuals and organisations concerned with mountain communities, environments and sustainable development. ICIMOD hosts the Global Secretariat of the Mountain Forum and operates the Asia Pacific Mountain Network (APMN).

www.mtnforum.org
www.mtnforum.org/apmn

ICIMOD Board of Governors 2006

Regional Board Members

Mr. Ismail Qureshi
CHAIRPERSON
ICIMOD Board of Governors
Secretary
Ministry of Food, Agriculture
and Livestock
Pakistan

Eng. Ghulam Mostafa Jawad
Deputy Minister of Agriculture
Ministry of Agriculture and Livestock
Afghanistan

Mr. Khan M. Ibrahim Hossain
Secretary-In-Charge
Ministry of Chittagong Hill Tracts Affairs
Bangladesh

Dasho Sangay Thinley
Secretary
Ministry of Agriculture
Bhutan

Prof. Li Jiayang
Vice President
The Chinese Academy of Sciences
China

Dr. Prodipto Ghosh
Secretary
Ministry of Environment and Forests
India

U Soe Win Hlaing
Director General
Forest Department
Myanmar

Prof. Dr. Ram Prasad Chaudhary
Member
National Planning Commission
His Majesty's Government of Nepal
Nepal

Independent Board Members

Dr. Tone Bleie
Chief, Gender and Development
UN ESCAP
Thailand

Prof. Bruno Messerli
Professor
Institute of Geography
University of Berne/MAB
Switzerland

Prof. Zhao Shidong
Forest Ecology
Chinese Academy of Sciences
China

Prof. Jamuna Sharan Singh
Emeritus Professor
Department of Botany
Banaras Hindu University
India

Dr. Rob Visser
Ministry of Foreign Affairs (DSI)
The Netherlands

Dr. Anne Whyte
VICE CHAIRPERSON
ICIMOD Board of Governors
Mestor Associates
Ontario, Canada

Dr. J. Gabriel Campbell
(Ex-officio)
Director General, ICIMOD

ICIMOD Donors 2006

CORE PROGRAMME DONORS

Regional Member Countries

Afghanistan
Bangladesh
Bhutan
China
India
Myanmar
Nepal
Pakistan

Supporting Countries

Austria
Denmark
Germany
Netherlands
Norway
Switzerland

CO-FINANCING PROJECT DONORS AND PARTNERS

- Asian Development Bank (ADB)
- Asia Pacific Network for Global Change Research/System for Analysis Research and Training (APN/START)
- Austrian Federal Government
- Common Fund for Commodities (CFC)
- European Space Agency
- German Government - Bundesministerium für Wirtschaftliche Zusammenarbeit und Entwicklung (BMZ) and Deutsche Gesellschaft für Technische Zusammenarbeit (GTZ)
- Food and Agriculture Organization of the United Nations (FAO)
- Ford Foundation
- Interchurch Organization for Development Cooperation (ICCO)
- Italy Ministry of Foreign Affairs-Directorate General for Development Cooperation (DGCS)
- International Development Research Centre, Canada (IDRC)
- International Fund for Agricultural Development (IFAD)
- International Institute for Geo-information Science and Earth Observation (ITC)
- International Potato Centre (CIP)
- MacArthur Foundation
- National Oceanic and Atmospheric Administration, USA (NOAA)
- Netherlands Development Organisation (SNV)
- Netherlands Ministry for Development Cooperation
- Norwegian Development Agency (NORAD)
- Sandia National Laboratories
- Swiss Agency for Development and Cooperation (SDC)
- The Mountain Institute (TMI)
- United Nations Educational, Scientific and Cultural Organization (UNESCO)
- United Nations Environment Programme (UNEP)
- United States Agency for International Development (USAID)
- United States Department of State/Regional Environment Office for South Asia (USDS/REOSA)
- Universiteit Twente
- University of California, San Diego (UCSD)
- Wetlands International, Netherlands

ICIMOD Medium Term Action Plan 2003-07

Programme Activity Partners

AFGHANISTAN

Country Focal Point

Ministry of Agriculture and Livestock , Kabul

Partners

Afghanistan Information Management System,
Kabul
Kabul University, Kabul
Ministry of Forest, Kabul
United Nations Development Programme, Kabul

BANGLADESH

Country Focal Point

Ministry of Chittagong Hill Tracts Affairs, Dhaka

Partners

Assistance for Livelihood of the Origins,
Khagrachari
Bangladesh Forest Department, Dhaka
Bangladesh Forestry Research Institute, Dhaka
Bangladesh Institute of Apiculture (BIA), Dhaka
Bangladesh Institute of Theatre Arts, Chittagong
Bangladesh Meteorological Department, Dhaka
Bangladesh National Commission for IHP, Dhaka
Bangladesh Small and Cottage Industries
Corporation, Dhaka
Bangladesh Water Development Board, Dhaka
Centre for Environment, GIS, Dhaka
Chittagong Hill Tracts Development Board,
Chittagong
Chittagong Hill Tracts Regional Council,
Rangamati
Global Water Partnership South Asia-Bangladesh,
Dhaka
Green Hill - NGO, Chittagong
Hill Tracts NGO Forum, Chittagong
Institute of Water Modelling, Dhaka
Jahangirnagar University, Dhaka
Local Government of Engineering Department
(LGED), Dhaka
Ministry of Environment and Forest, Dhaka
TOYMU for Sustainable Overall Economic
Development, Sadar Hospital Road
United Nations Development Programme, Dhaka
University of Chittagong, Chittagong
University of Dhaka, Dhaka
World Conservation Union (IUCN), Dhaka
Zabaranga Kalayan Samity, Khagrachari

BHUTAN

Country Focal Point

Ministry of Agriculture, Thimphu

Partners

Bhutan-German Sustainable RNR Development
Project, Lobesa
Council for Research and Extension, MoA,
Thimphu
Department of Agriculture, MoA, Thimphu
Department of Energy, Thimphu
Department of Geology and Mines, MoTI,
Thimphu
Department of Livestock, MoA, Thimphu
Department of Survey and Land Records, MoA,
Thimphu
Dzongkhag Administration, Paro & Gasa
Hydromet Services Division, Department of
Energy, MoTI, Thimphu
Information and Communications Services, MoA,
Thimphu
Ministry of Home Affairs, Thimphu
Ministry of Works and Human Settlements,
Thimphu
National Environment Commission, Thimphu
Nature Conservation Department, MoA, Thimphu
Office of Census Commission, MoHA, Thimphu
Policy and Planning Division, MoA, Thimphu
Renewable Natural Resources Research Center,
Yusipang, Bajo and Khangma
Royal Society for Protection of Nature, Thimphu
Second Eastern Zone Agriculture Project, Thimphu
SNV - Netherlands Development Organisation in
Asia, Thimphu
Tarayana Foundation, Thimphu
WWF-Bhutan Programme, Thimphu

CHINA

Country Focal Point

Chinese Academy of Sciences (CAS), Beijing
Kunming Institute of Botany, CAS, Kunming

Partners

Bureau of Hydrology, MoWR, Beijing
Bureau of Hydrology, Tibet Autonomous Region,
Lhasa
Bureau of Water Conservancy, TAR, Lhasa

CAS: Bureau of Resources and Environment, Beijing
 CAS: Chengdu Institute of Biology, Chengdu
 CAS: Cold & Arid Regions Environmental & Engineering Research Institute, Lanzhou
 CAS: Institute of Geographical Science and Natural Resource Research, Beijing
 CAS: Institute of Tibetan Plateau Research, Beijing
 CAS: Kunming Institute of Botany, Kunming
 CAS: Mountain Disasters and Environment Research Institute, Chengdu
 CAS: Northwest Institute of Plateau Biology, Xining
 Centre for Biodiversity and Indigenous Knowledge, Kunming
 China Meteorological Administration, Beijing
 Eastern Bee Research Institute, YAU, Kunming
 Gansu Agricultural University, Lanzhou
 Livestock Research Institute, TAAAS, Lhasa
 National Meteorological Centre, Beijing
 Sichuan Grassland Institute, Chengdu
 Sichuan Integrated Rural Development, Sichuan
 Sichuan University, Sichuan
 Southwest Forestry College, Kunming
 Tibet Academy of Agriculture & Animal Husbandry Sciences, Lhasa
 Tibet University, Lhasa

INDIA

Country Focal Point

Ministry of Environment and Forests, New Delhi

Designated Lead Agency

GB Pant Institute of Himalayan Environment & Development, Almora & Itanagar

Partners

Ashoka Trust for Research in Ecology and Environment, Bagdogra
 Central Himalayan Environment Association (CHEA), Nainital
 Central Water Commission, New Delhi
 Centre for Development Initiatives, Dehradun
 Centre for Spatial Database Management and Solutions, Delhi
 Chhattisgarh State Minor Forest Produce Co-op. Federation Ltd., Raipur
 CSK Himachal Pradesh Agricultural University, Palampur
 Darjeeling Earth Group, Darjeeling
 Darjeeling Gorkha Autonomous Hill Council, Darjeeling
 Darjeeling Ladenla Road Prerna, Darjeeling

Department Forests, Government of West Bengal, Darjeeling
 Ecotourism and Conservation Society of Sikkim, Gangtok
 Federation of Societies for Environment Protection, Darjeeling
 GB Pant Institute of Himalayan Environment and Development, Almora and Itanagar
 Government of Uttaranchal, Dehradun
 Grassroots Options, Shillong
 Himalayan Environment Trust, New Delhi
 Indian Institute of Technology (IIT), Roorkee
 Indian Meteorological Department, New Delhi
 Indo-German Changar Eco-Development Project, Palampur
 Institute of Integrated Resources Management, Assam
 Jlet Technology, Noida
 Ladakh Autonomous Hill Development Council, Leh
 Ladakh Environment and Health Organisation, Leh
 LEAD India Network, New Delhi
 Ministry of Environment and Forests - North East Regional Office
 Ministry of Water Resources, New Delhi
 Nagaland Empowerment of People through Economic Development Project, Kohima
 National Centre for Medium Range Weather Forecasting, Noida
 National Meteorological Centre, New Delhi
 Navrachna, Palampur
 North Bengal University, Department of Botany, Siliguri
 North Eastern Council, Shillong
 North Eastern Hill University, Shillong
 North Eastern Region Community Resource Management Project, Shillong
 North Eastern Society for Protection of Nature, Siliguri
 Office of the Conservator of Forests, Govt. of West Bengal, Darjeeling
 Rural Community Development Centre, Darjeeling
 Rural Litigation and Entitlement Kendra, Dehradun
 Sambandh Network, Dehradun
 Sanion Ka Sangathan, Almora
 Society for Ecology, Water Resources and Afforestation, Mussoorie
 Society for High Ice, New Delhi
 Society for Social Uplift through Rural Action, Solan

ICIMOD Medium Term Action Plan 2003-07

Programme Activity Partners

(continuation)

Society for Technology and Development, Mandi,
Himachal Pradesh
SUTRA, Jagjitnagar
The Ecological Foundation of India, New Delhi
The Energy Resources Institute, New Delhi
The Missing Link, Guwahati
University of Jammu, Department of Sociology,
Jammu
Voluntary Health Association, Meghalaya
Wadia Institute of Himalayan Geology, Dehradun
Wildlife Institute of India, Dehradun
WWF-Nature (India) Darjeeling Project-
SERVE, Dehradun
YS Parmar University of Horticulture & Forestry,
Solun

MYANMAR

Country Focal Point

Forest Department, Yangon

Partners

Department of Meteorology and Hydrology,
Yangon
ECODEV Group, Yangon
Ministry of Agriculture, Yangon
Ministry of Livestock and Fisheries, Yangon
University of Forestry, Yezin

NEPAL

Country Focal Point

National Planning Commission, HMG/N

Partners

Action Aid, Nepal, Kathmandu
Alital Multipurpose Cooperatives Ltd., Dadeldhura
Annapurna Beekeeping and Environment
Promotion (BEENPRO), Kaski
Apiculturists' Network Nepal, Lalitpur
Association of Research and Management
Services, Kathmandu
Bee Development Section, DoA, Godavari
Canadian Centre for International Studies and
Cooperation (CECI), Kathmandu
Central Bureau of Statistics, Kathmandu

Central Department of Meteorology, TU,
Kathmandu
Centre for Environmental & Agricultural Policy
Research Extension and Development
(CEAPRED), Kathmandu
Centre for Rural Technology (CRT), Kathmandu
Churia Forest Development Project, Siraha
Dabur Nepal Private Limited, Kathmandu
Department of Agriculture, Lalitpur
Department of Forests & Soil Conservation,
Kathmandu
Department of Hydrology and Meteorology,
Kathmandu
Department of Irrigation, Kathmandu
Department of National Parks and Wildlife
Conservation, Kathmandu
Department of Soil Conservation & Watershed
Management, Kathmandu
Department of Water Induced Disaster Prevention,
Kathmandu
DEPROSC, Kathmandu
Development Projects Services Centre, Kathmandu
District Road Support Programme, SDC, Lalitpur
Educate the Children, Kathmandu
Federation of Community Forestry Users Group in
Nepal (FECOFUN), Kathmandu
FOREST ACTION, Lalitpur
Forum for Law, Women and Development,
Kathmandu
Forum for Sustainable Development, Kathmandu
Hills Leasehold Forestry and Forage Development
Project, Kathmandu
Himalayan Grassroots Women's Natural
Resources Management Network
(HIMAWANTI), Lalitpur
Human Rights, Social Awareness and
Development, Dhankuta
Ilam Cooperation Council, Ilam
Institute of Agriculture and Animal Sciences,
Chitwan
Intermediate Technology Development Group
(ITDG), Lalitpur
IUCN-The World Conservation Union-Nepal,
Lalitpur

Kathmandu University, Dhulikhel
 King Mahendra Trust for Nature Conservation
 (KMTNC), Lalitpur
 Kirtipur Municipality, Kathmandu
 Legal Aid and Consultancy Centre, Lalitpur
 Local Initiatives for Biodiversity Research and
 Development (LI-BIRD), Pokhara, Kaski
 Mercantile Communications Pvt. Ltd, Kathmandu
 Ministry of Environment, Science and Technology,
 Kathmandu
 Ministry of Forests & Soil Conservation,
 Kathmandu
 Namsaling Community Development Centre, Ilam
 National Forum for Advocacy Nepal, Lalitpur
 National Society for Earthquake Technology -
 Nepal, Kathmandu
 Nepal Federation of Irrigation Water Users
 Association, Kathmandu
 Nepal GIS Society, Kathmandu
 Nepal South Asia Centre, Kathmandu
 NORMS, Kathmandu
 Sarwanam, Kathmandu
 South Asia Watch on Trade, Economics &
 Environment, Kathmandu
 Spiny Babbler, Lalitpur
 Surya Social Service Society (4S), Jumla
 The Mountain Institute, Kathmandu
 Tourism for Rural Poverty Alleviation Programme,
 Kathmandu
 Tribhuvan University, Kathmandu
 United Nations Development Programme (UNDP),
 Lalitpur
 Upper Mustang Biodiversity Conservation Project,
 Mustang
 WATCH, Kathmandu
 Water and Energy Commission, MoWR,
 Kathmandu
 Western Uplands Poverty Alleviation Project,
 Nepalgunj
 World Wildlife Fund-Nepal, Kathmandu
 Worldlink Technologies Pvt. Ltd., Lalitpur

PAKISTAN

Country Focal Point

Ministry of Food, Agriculture and Livestock,
 Islamabad

Designated Lead Agency

Pakistan Agricultural Research Council (PARC),
 Islamabad

Partners

Aga Khan Rural Support Programme (AKRSP),
 Chitral
 Arid Zone Research Centre, PARC, Quetta
 Benti Malakand Welfare Organisation, Malakand,
 NWFP
 Dir Area Support Programme, Dir
 District Coordination Council of NGOs, Chitral
 Federal Flood Commission, Islamabad
 Flood Forecasting Division, Islamabad
 Honeybee Research Institute, PARC, Islamabad
 Innovation for Poverty Reduction Project (IPRP),
 Swat, NWFP
 IUCN-The World Conservation Union-Pakistan,
 Islamabad
 Meteorological Department, Lahore
 National Aridland Development and Research
 Institute, Islamabad
 National Centre of Excellence for Geology,
 University of Peshawar
 National Rural Support Programme, Islamabad
 Northern Areas Development Project, Chilas,
 Diamar
 NWFP Agricultural University Peshawar, Peshawar
 Pakistan Agriculture Research Council, Islamabad
 Pakistan Council for Research in Water Resources,
 Islamabad
 Pakistan Forest Institute, Peshawar
 Pakistan Meteorological Department, Islamabad
 Rural Support Programmes Network, Islamabad
 Society for Awareness of Human Development
 and Rights, Buner, NWFP
 South Federally Administered Tribal Areas
 Development Project, Peshawar
 SUNGI Development Foundation, Islamabad
 Technology Transfer Institute, PARC, Quetta
 University of Peshawar, Peshawar
 Water Resources Research Institute, NARC
 Islamabad

ICIMOD also works with local NGOs and grassroots networks not listed here. New partners are added as work expands.

February 2006

ICIMOD'S HEADQUARTERS



ICIMOD's headquarters is located at Khumaltar in Lalitpur District in the Kathmandu Valley, on a 1.5 ha site generously provided by His Majesty's Government of Nepal in 2001. The building was inaugurated by His Majesty King Gyanendra Bir Bikram Shah Dev on 5th December 2004, on the occasion of the Centre's 21st Anniversary.

We gratefully acknowledge and value the support of our donors and regional member countries that has enabled ICIMOD not only to have its own home but also to enhance its institutional effectiveness.

Regional Member Country Support for the ICIMOD Headquarters Building

| | |
|-------------------|--|
| Nepal | 1.5 ha of land (estimated value over US\$1,000,000) |
| Bangladesh | US\$ 28,300 (partly used for Bangladesh Pavilion) |
| Bhutan | In kind (Bhutan pavilion) |
| China | US\$ 100,000 (Reception area dedicated to China) |
| India | US\$ 98,717 (Conference room dedicated to India) |
| Pakistan | US\$ 96,841 (Library dedicated to Pakistan) |

ICIMOD is the first international, independent Mountain Learning and Knowledge Centre serving eight regional member countries of the Hindu Kush-Himalayas and the global mountain community. Founded in 1983, ICIMOD is based in Kathmandu, Nepal, and brings together a partnership of regional member countries, over 300 institutions within and outside the region, and donors with a commitment for development action to secure the future of the Hindu Kush-Himalayas.

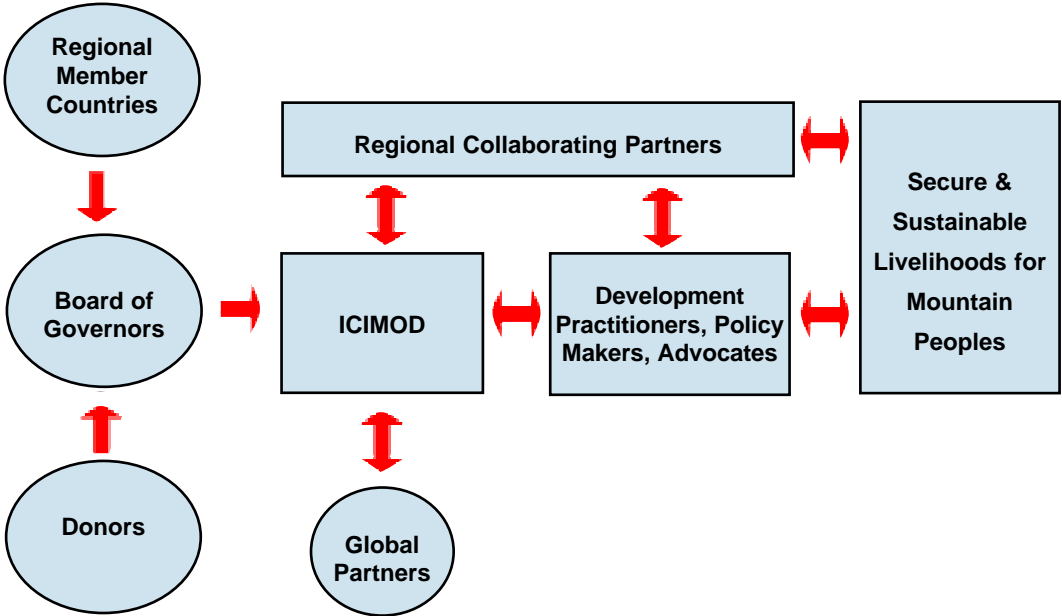
- One hundred and forty staff and associates are drawn from the region and around the world.
- The Board of Governors has 15 members - 8 representatives from regional member countries and 7 independent members nominated by the ICIMOD Support Group.
- The annual budget is approximately US\$5-6 million - half from core programme donors and the remaining half from 24 bilateral, multilateral and private donors.
- From 1983-2002, more than 350 technical publications, nearly 650 general publications, and 20 videos were produced and disseminated.
- The Centre has an active mailing list of over 3000 institutions and individuals.



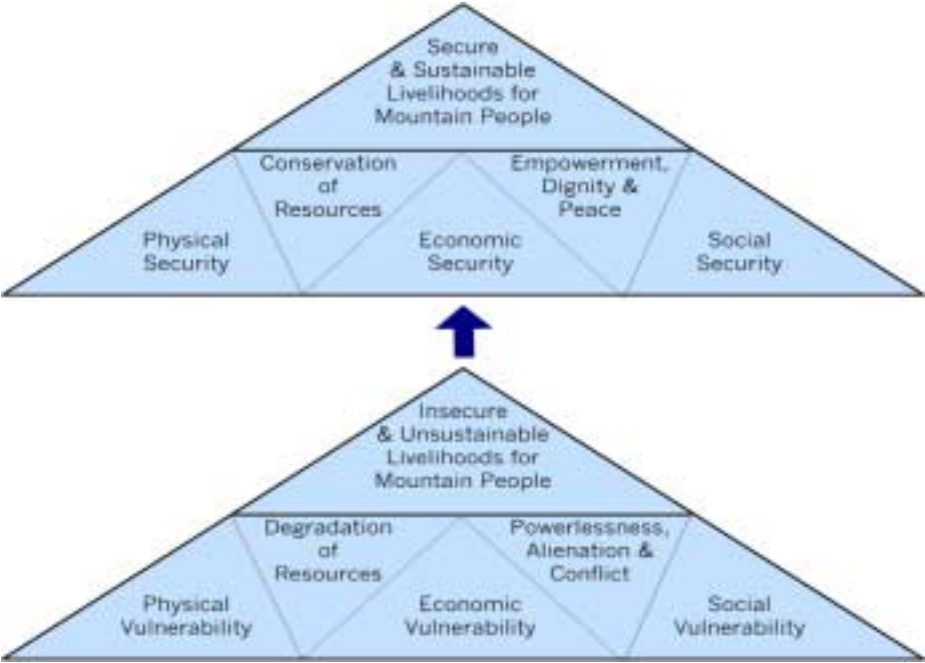
Vision

Prosperous and secure mountain communities committed to peace, equity and environmental sustainability

The ICIMOD PARTNERSHIP



Transforming Vulnerabilities into Secure & Sustainable Livelihoods for Mountain People



Mission

To develop and provide integrated and innovative solutions, in cooperation with regional and international partners, which foster action and change for overcoming mountain people's economic, social and physical vulnerability.