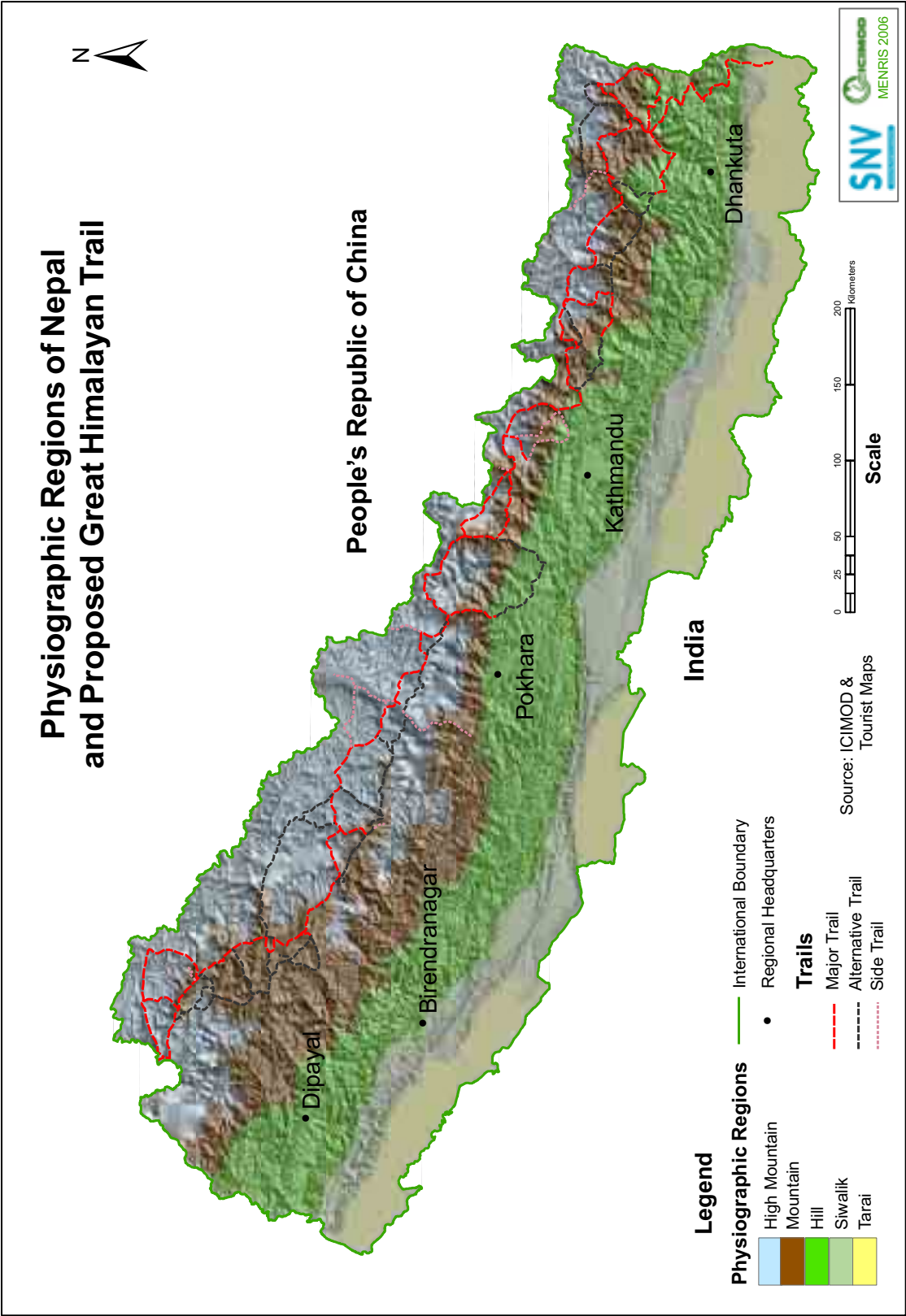




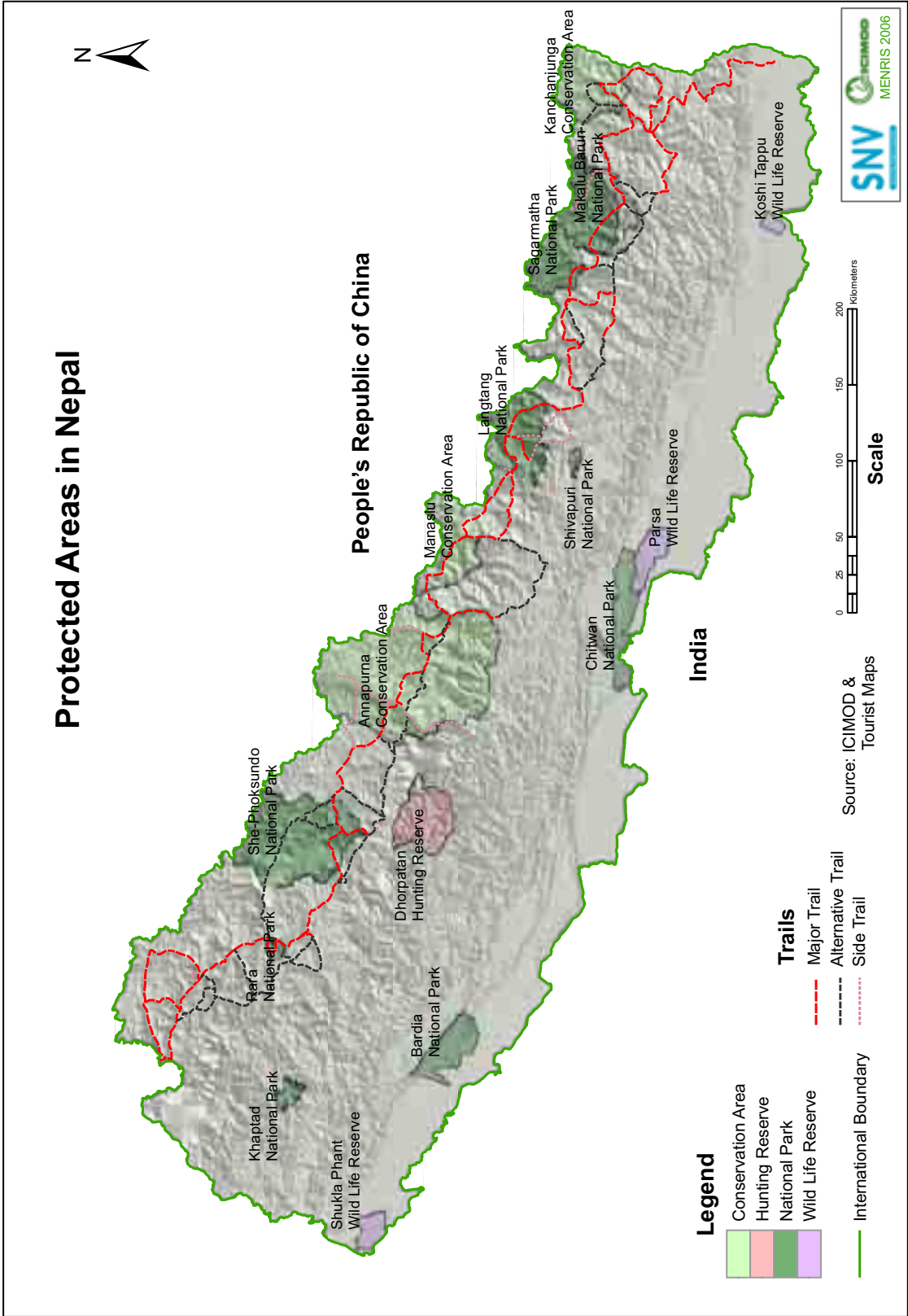
Annexes

ANNEX 1: MAPS

Physiographic Division of Nepal with the Proposed GHT

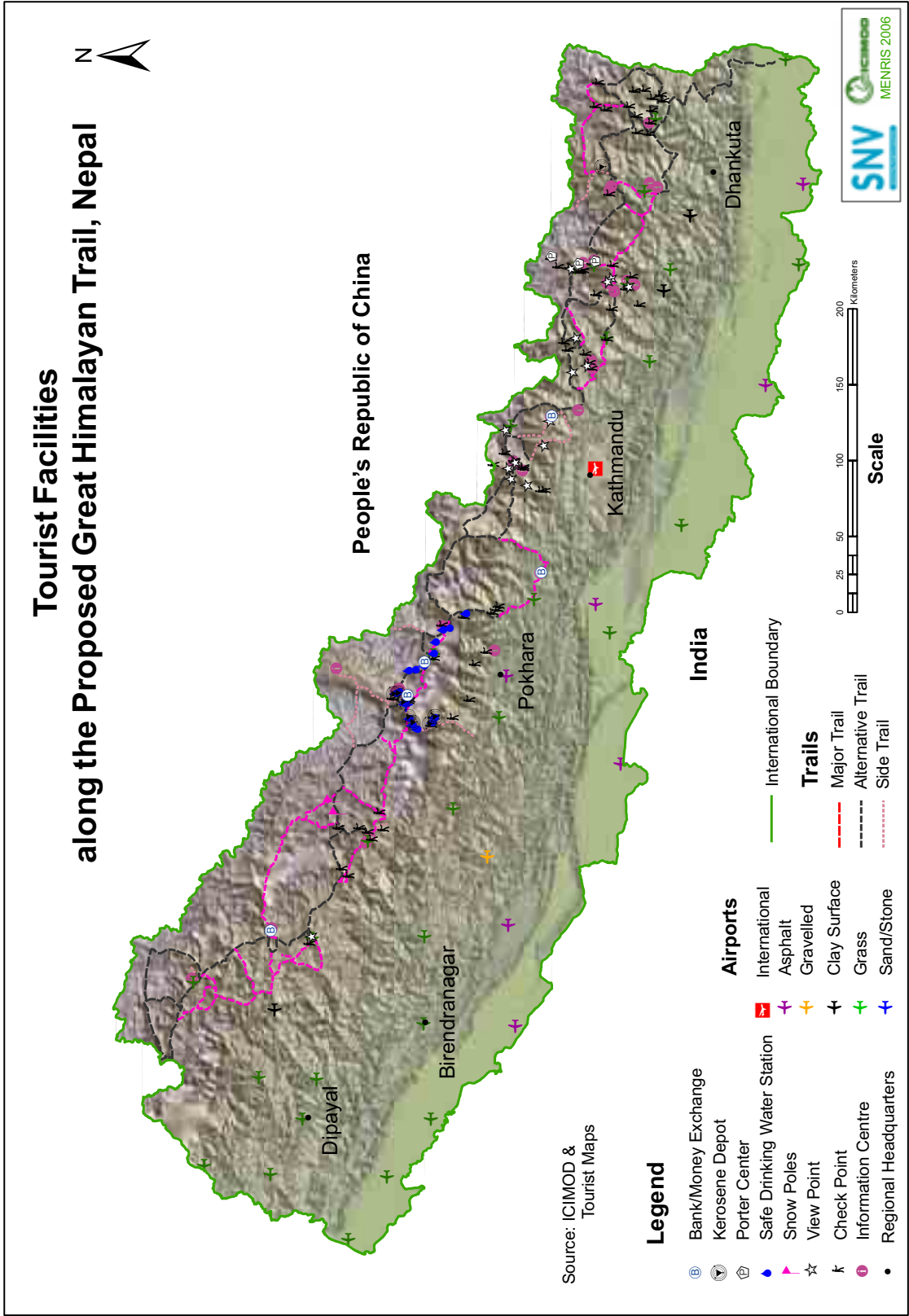


Protected Areas in Nepal

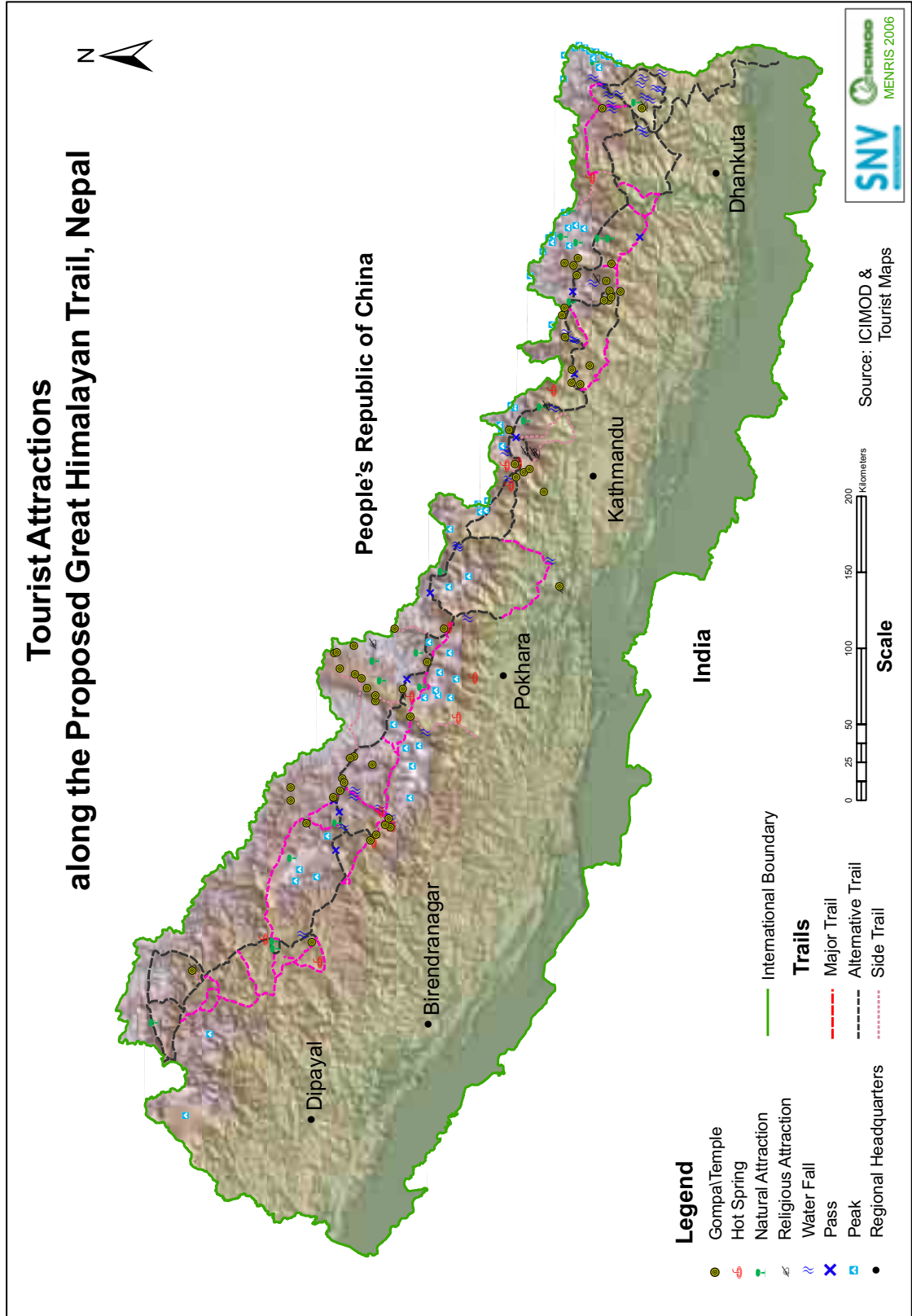




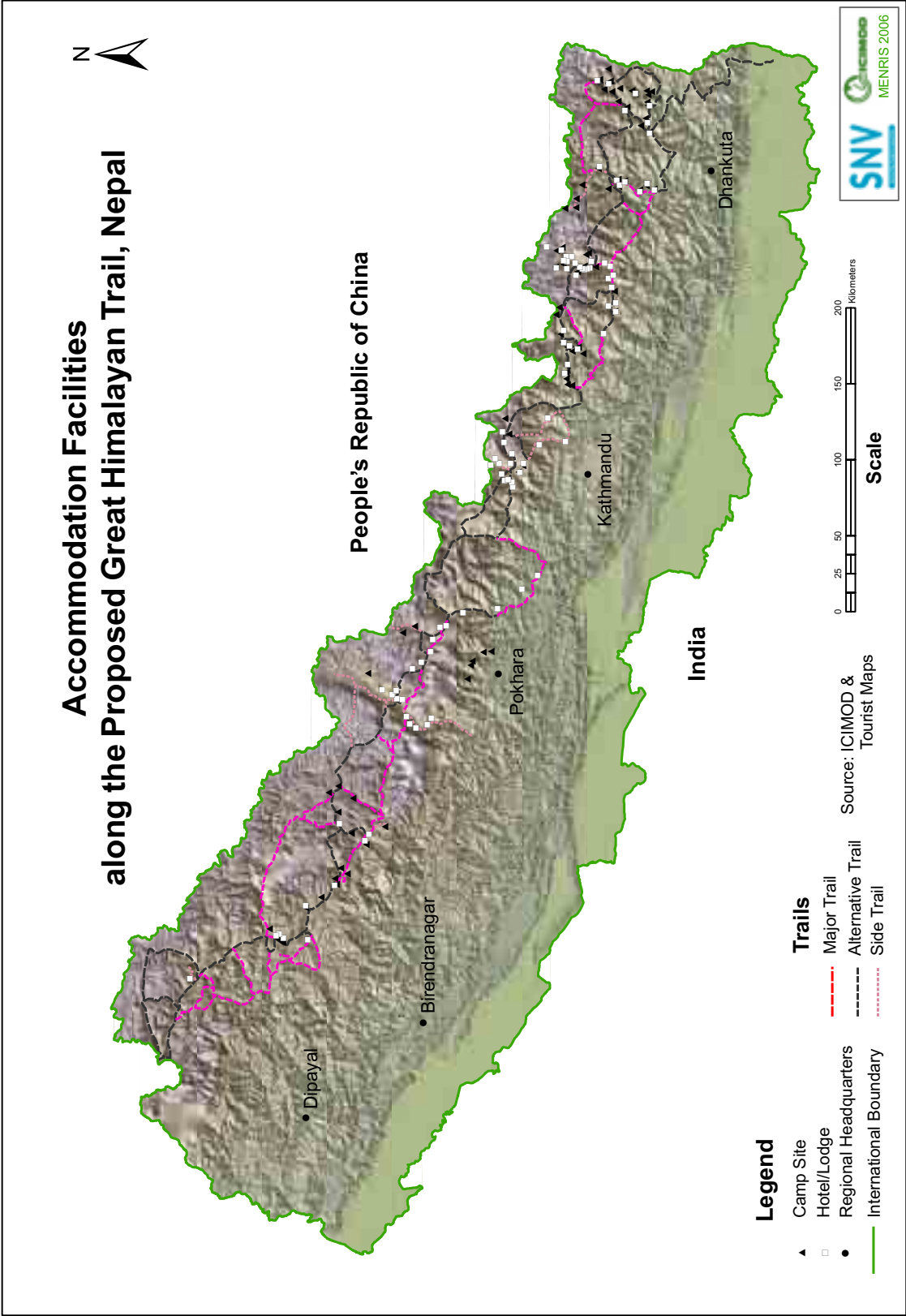
Tourism Facilities



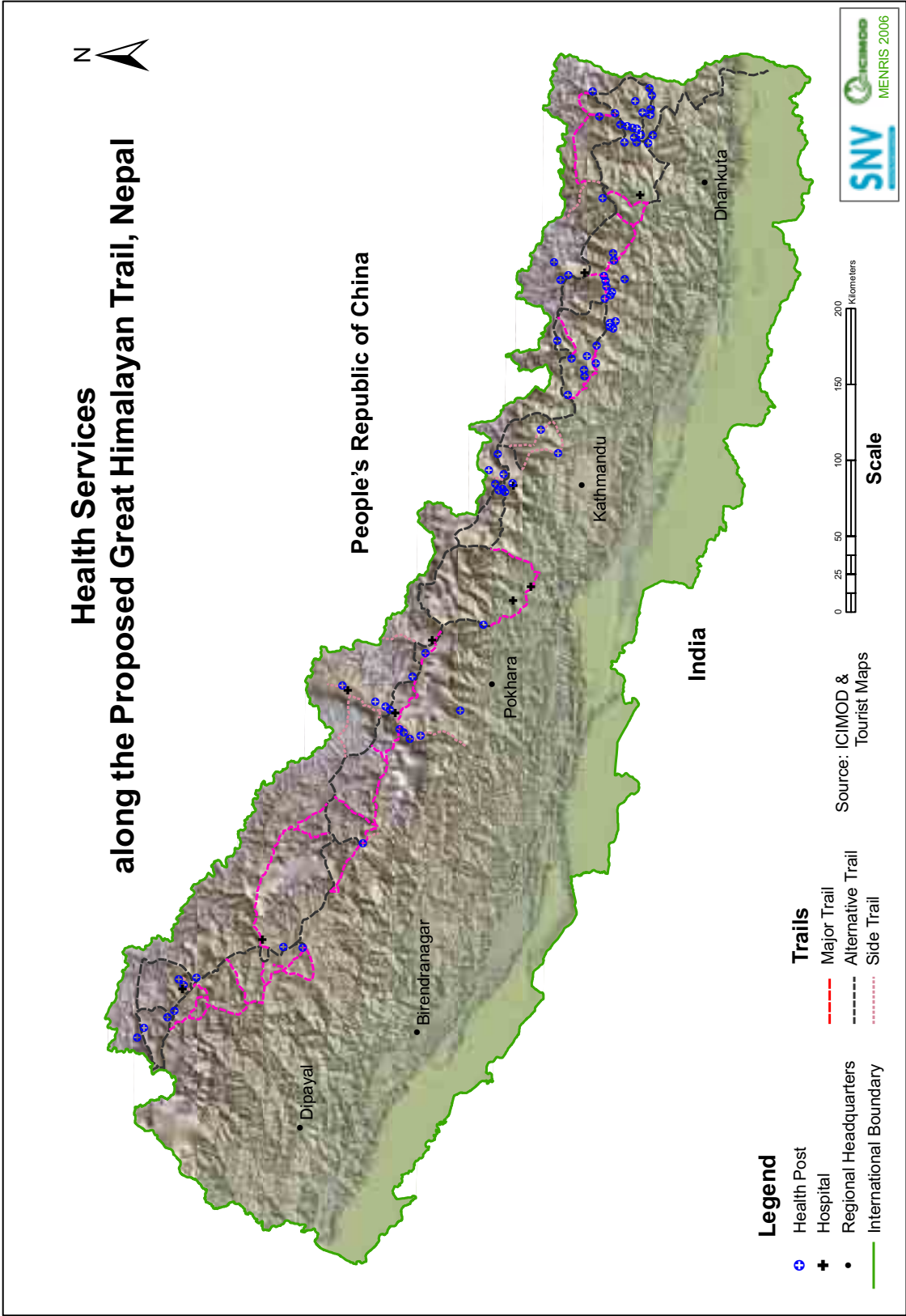
## Tourism Attractions



Accommodation Facilities

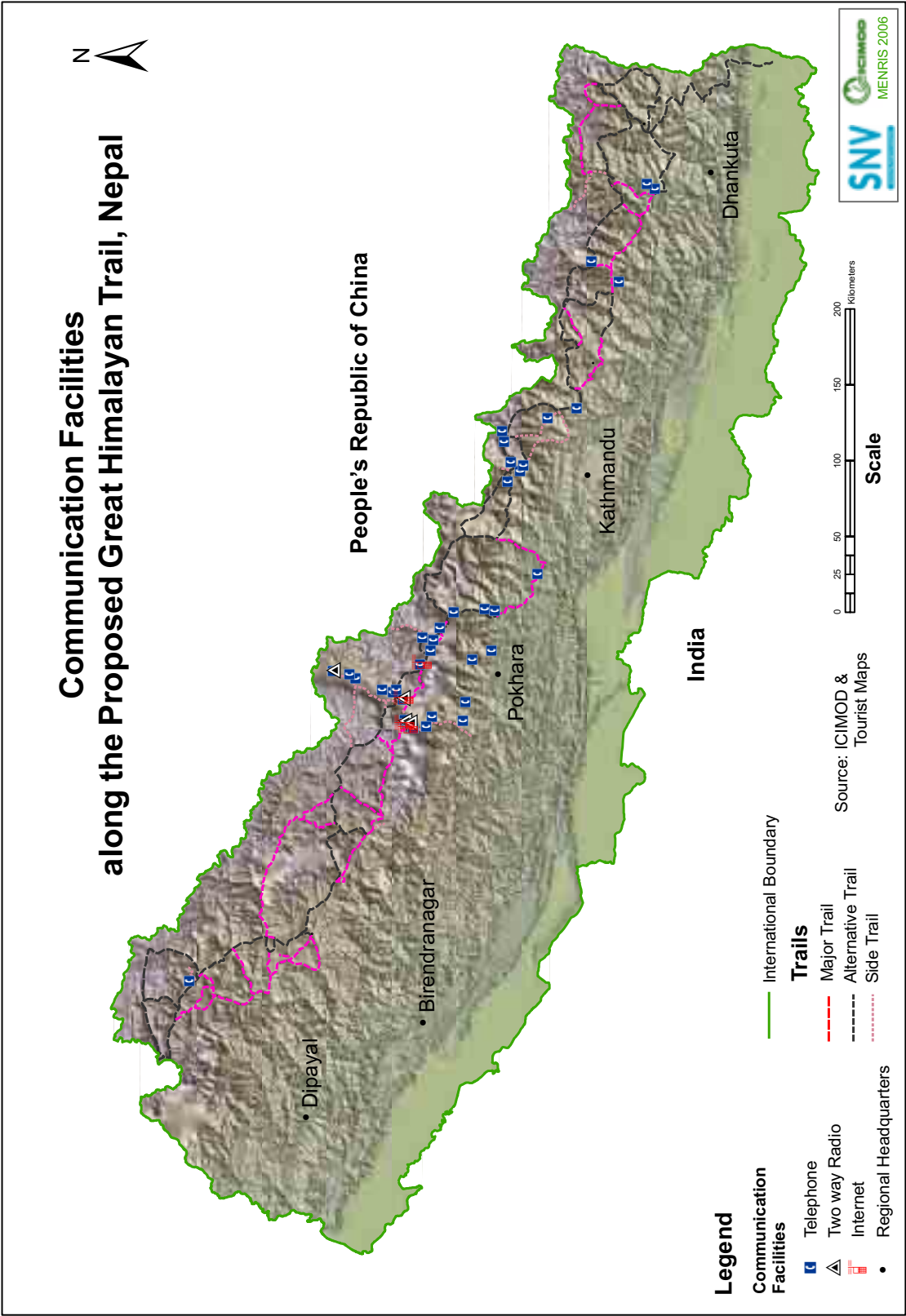


Health Services



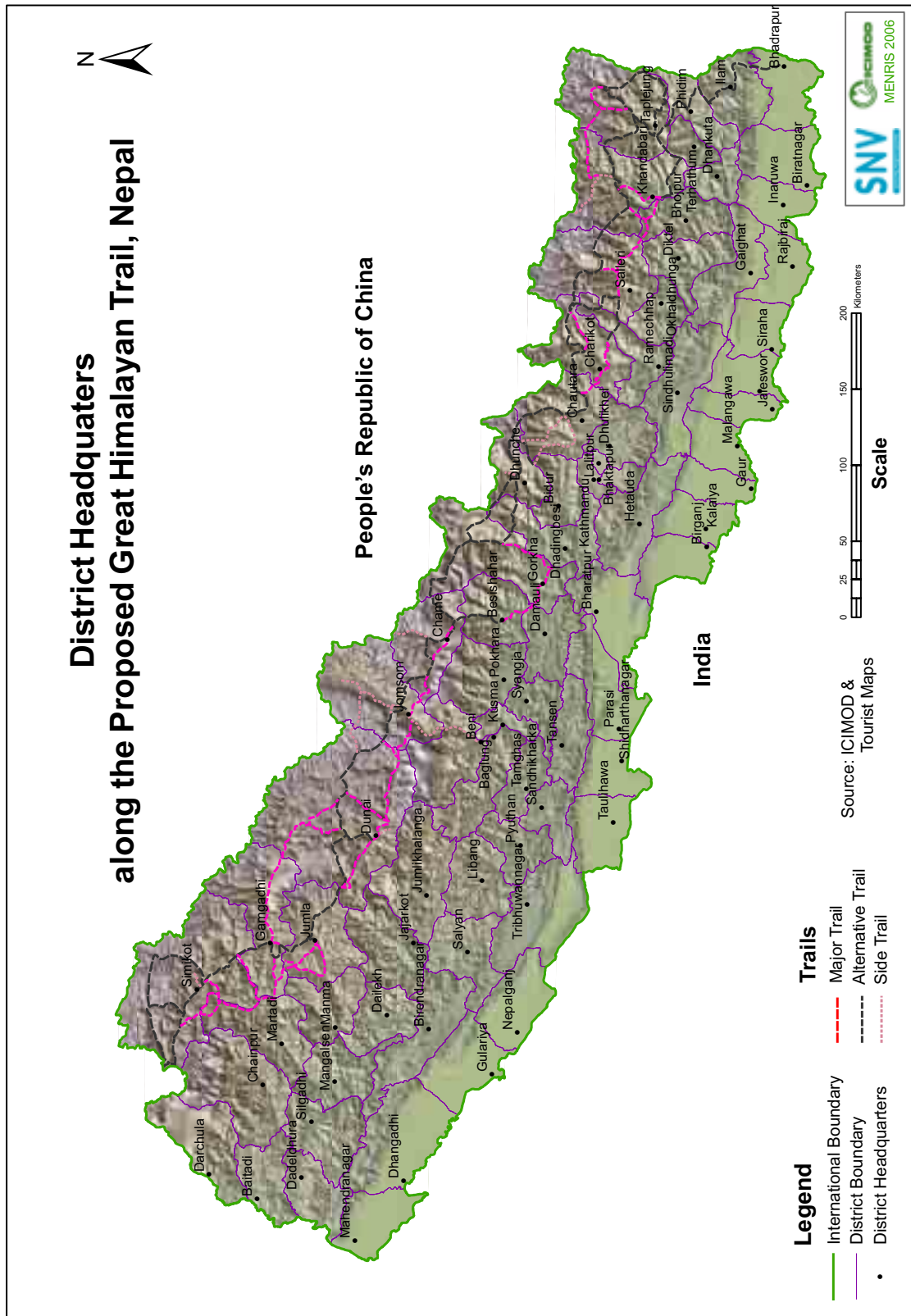


Communication Facilities





# District Headquarters along the Proposed Great Himalayan Trail, Nepal



## ANNEX 2: THE GEO MULTIMEDIA INFORMATION SYSTEM AND THE DOLPO CD

### The Geo Multimedia Information System

The Geo Multimedia Information System was developed to support the display of tourism information (facilities and services) within a geographical context. This system combines geographical (maps) and multimedia (texts, photos, and videos) information, represents information in an appealing and accessible format and allows users to interactively browse tourism related information and products.

Within the frame of the GHT Development Program (GHTDP), this system has great potential for be used as a:

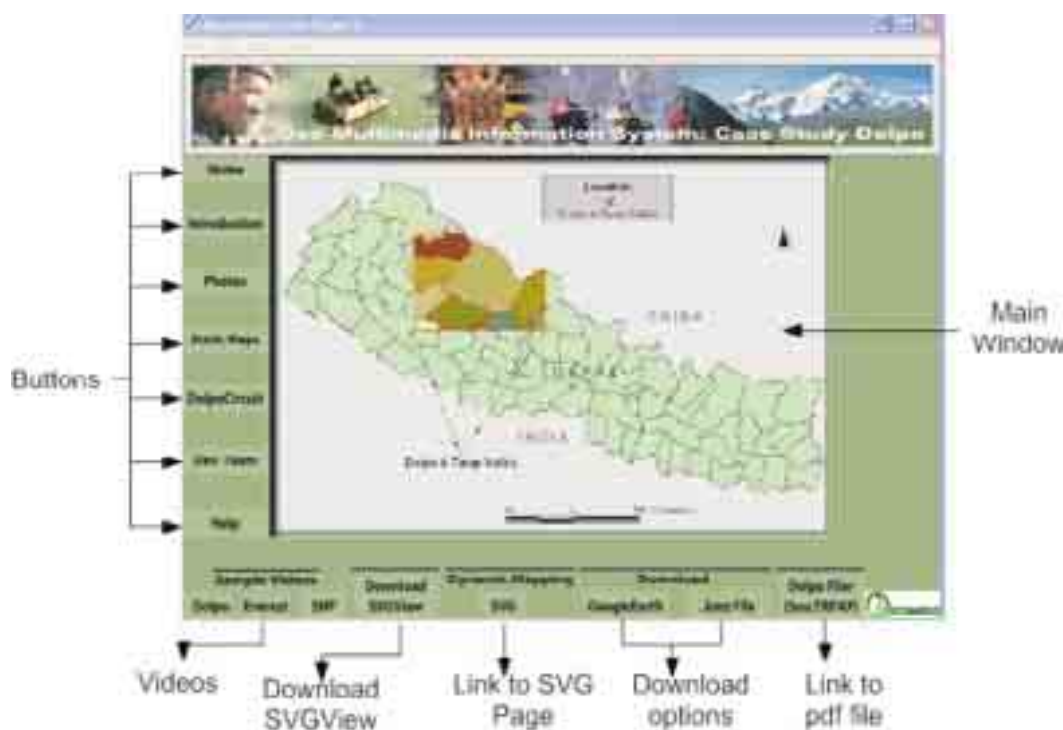
- management tool for planning, development and implementation of the GHTDP
- marketing tool to promote tourism products and carry out fundraising activities

### The Dolpo CD

The application (CD) developed for the Dolpo region aimed at presenting potential features that can be used to display tourism available data from the proposed Great Himalayan Trail. Key features of this application are:

- Self running interactive presentation
- Can be used in both online (web) and offline (CD-ROM) systems
- Interactive disc-running multimedia presentation with a GIS mapping component.
- Tourism information represented in a geographical context
- Provides simple GIS functions for using spatial data

#### DEFAULT DISPLAY



## OVERVIEW OF THE ENTIRE APPLICATION



## Dolpo on Google Earth

Google Earth provides innovative 3D visualization features (3D navigation, angles and rotations of 3D terrains and virtual tours (flight through areas of interest)) that can also be used to represent tourism information within a geographical context.

To demonstrate some of these features, the Dolpo CD includes videos of the Sagarmatha National Park (SNP) and Dolpo. Since the displaying of information requires special software the Dolpo application also includes links to download *Google Earth* software<sup>5</sup> and *KMZ* files<sup>6</sup>. Following are some examples of the different 3D features included in the Dolpo CD.

### SCREEN SHOTS FROM GOOGLE EARTH



<sup>5</sup> Google Earth software offers great opportunities for developing modern tourism applications. It uses high resolution satellite images, elevation, terrain, and geo-physical maps to present information to the users in a 3D format.

<sup>6</sup> The KMZ file enables users to view regions in the Google Earth software.



## ANNEX 3: LIST OF PARTICIPANTS IN THE GHT WORKSHOP

### NGOs

Organization	Name	Designation
1) CCODER	Dr Govindra Dhital	President
2) Himaland	Tilak B. Lama	Managing Director
3) ICIMOD	Ester van der Blonk	Eco-Tourism Expert
4) KMTNC	Deepak Kumar Singh	Director Special Projects
5) KMTNC	Dr Siddhartha B. Bajracharya	Program Manager
6) Manang Youth Society	Tshering Gurung	General Secretary
7) NATO	Yadav Khanal	Executive Member
8) Nepal Academy of Tourism	Rabina Shrestha	Student & Hotel Management
9) Nepal Trust	Lhakpa G. Sherpa	Program Manager
10) NTB	Lila B. Baniya	Manager
11) NTB	Namrata Shrestha	STN Coordinator
12) NTB	Subash Nirola	Director
13) SNV/NTB	Birgit Lienhart	Consultant
14) SNV/NTB	Monica Oliveros	Consultant
15) TAAN	Deepak Mahat	President
16) TMI	Ang Phuri Sherpa	Manager
17) TMI	Sarah Subba	Program Development
18) TRPAP	Balendra Prasad Deo	GIS Associate
19) TRPAP	Ek Raj Sigdel	Program Officer
20) TRPAP	Yogendra Kayesta	Monitoring and Evaluation Specialist

### Private Sector

Company	Name	Designation
1) Asian Trekking	Dawa Sherpa	Manager
2) Dream Nepal Travels	Bijaya Pradhan	Chairman
3) Highlander Trekking	Chewan Lama	Promotion Manager
4) Himalaya Expeditions	Suresh Yonzon	Trek Leader
5) NVR	Lekh Raj Niroula	Manager
6) Social Tours	Bishwa Raj Gyawali	Managing Director
7) Temple Tiger	Robin Marston	Director Operations

## ANNEX 4: LIST OF ORGANISATIONS CONSULTED

	CONTACT INFORMATION
<b>ADB</b>	<b>Asian Development Bank</b> Srikunj, Kamaldi, Ward No. 31 P.O. Box 5017, Kathmandu, Nepal Tel: +977-1-4227779, Fax: +977-1-4225063 E-mail: adbnrm@adb.org / webmaster@adb.org, Website: www.adb.org/NRM
<b>CARE</b>	<b>CARE</b> Krishna Galli, Pulchowk P.O. Box 1661, Kathmandu, Nepal Tel: +977-1-5522800, Fax: +977-1-5521202 Email: care@carenepal.org, Website: www.carenepal.org
<b>CCODER</b>	<b>Centre for Community Development and Research</b> P.O. Box 5716 Gongabu, Kathmandu, Nepal Tel: +977-1-4351681, 4352282, Fax: +977-1-4220143 Email: contact@ccoder.org / ctourism@ccoder.org, Website: www.ccoder.org
<b>CIDA/CCO</b>	<b>Canadian International Development Agency/ Canadian Cooperation Office</b> Lazimpat, Kathmandu, Nepal Tel: +977-1-4415391, 4415391, Fax: +977-1-4410422 Email: cco@canadanepal.org, Website: www.acdi-cida.gc.ca /www.cconepl.org.np
<b>Danida - Denmark</b>	<b>Danish International Development Assistance</b> P.O. Box 6332, Tel: +977-1-4413010, Fax: +977-1-4411409 Email: ktmamb@um.dk
<b>DFID</b>	<b>UK Department for International Development Nepal</b> British Embassy, Lainchaur P.O. Box 106, Kathmandu, Nepal Tel: +977-1-542980, 542981, Fax: +977-1-542979 Email: DFID-Nepal@DFID.gov.uk, Website: www.dfid.gov.uk
<b>Dream Nepal</b>	<b>Dream Nepal Travel &amp; Tours Pvt. Ltd.</b> G.P.O Box 20209, Lazimpat, Kathmandu, Nepal Tel: +977-1-4413690, Fax: +977-1-4255487 Email: stt@mos.com.np/ bijayapradhan@hotmail.com Web Site: www.dreamnepal.com.np / www.discovernepal.np/dreamnepal
<b>EC</b>	<b>European Commission</b> P.O. Box 6754 Uttar Dhoka Sadak Lainchaur, Kathmandu, Nepal Tel: +977-1-4429445-6.
<b>Eco Himal</b>	<b>Society for Ecological Cooperation Alps-Himalaya</b> P.O. Box 3028 Panipokhari, Kathmandu, Nepal Tel: +977-1-414714, Fax: +977-1-437304 Email: ecohimal@ccsl.com.np, Web Site: www.ecohimal.org
<b>FAO</b>	<b>Food and Agriculture Organization</b> UN House, Pulchowk, Lalitpur P.O. Box 25, Kathmandu, Nepal Tel: +977-1-5523200, Fax: +977-1-5526358 Email: FAO-NPL@field.fao.org/ FAONP-WEB@fao.org, Website: www.fao.org.np
<b>FINLAND</b>	<b>Embassy of Finland</b> Dilli Raman Marg 39, Lazimpat G.P.O. Box 2126, Kathmandu-2, Nepal Tel : +977-1-4417221, 4416636, Fax: +977-1-4416703 Email: sanomat.kat@formin.fi, Website: www.formin.finland.fi / www.finland.org.np

<b>GTZ</b>	<b>German Agency for Technical Cooperation</b> Neer Bhawan, Sanepa P.O. Box 1457, Kathmandu, Nepal Tel: +977-1-5523228, 5523231, Fax: +977-1-5521982 Email: gtz-nepal@gtz.de, Website: www.gtz.de / www.ifsp-nepal.org.np
<b>HCDA</b>	<b>Humla Conservation and Development Association</b>
<b>Helvetas</b>	<b>Swiss Association for International Cooperation</b> Bakhundole Height, Pulchowk G.P.O. Box 688, Kathmandu, Nepal Tel: +977-1-5524925, 5524926, 5522013, 5531109, Fax: +977-1-5526719 Email: po@helvetasnepal.org.np, Website: www.helvetasnepal.org.np / www.helvetas.ch
<b>ICIMOD</b>	<b>International Centre for Integrated Mountain Development</b> Khumaltar, Jawalakhel G.P.O. Box 3226, Kathmandu, Nepal Tel: +977-1-5525313, Fax: +977-1-5524509, 5536747 Email: icimod@icimod.org.np, Website: www.icimod.org
<b>ILO</b>	<b>International Labour Organization</b> Ring Road, Dhobhighat/ Sanepa P.O. Box 8971 or C/O 107 (KTM), Lalitpur, Nepal Tel : +977-1-55317521, 5535069, Fax: +977-1-5531332 Email: kathmandu@ilo.org, Website: www.ilo.org
<b>INF</b>	<b>International Nepal Fellowship</b> International Headquarters Office, Simpani, Bagar P.O. Box 5, Pokhara, Nepal Tel: +977-0-61520111, Fax: +977-061520430 Email: hq@inf.org.np, Website: www.inf.org.np
<b>JICA</b>	<b>Japan International Cooperation Company</b> Block B, Karmachari Sanchaya Kosh Building Hariharbhavan P.O. Box 450, Lalitpur, Kathmandu, Nepal Tel: +977-1-5552205, 5552269, 5552350, Fax: +977-1-5552284 Email: office@jica.org.np, Website: www.jica.org.np
<b>KEEP</b>	<b>Kathmandu Environmental Education Project</b> P.O. Box 9178, Tridevi Marg, Thamel, Kathmandu, Nepal Tel: +977-1-4412944, Fax: +977-1-4413018 Email: keep@info.com.np, Website: www.keepnepal.org
<b>KMTNC</b>	<b>King Mahendra Trust for Nature Conservation/Annapurna Conservation Area Project</b> G.P.O. Box 3712 Jawalakhel, Lalitpur, Nepal Tel: +977-1-526571, 526573, 526008, Fax: +977-1-526570 Email: info@kmtnc.org.np, Website: www.kmtnc.org.np
<b>LEP</b>	<b>Langtang Eco-Tourism Project</b>
<b>Nepal Trust</b>	<b>Nepal Trust</b> Chun Devi, Maharajgunj G.P.O. Box 8975 EPC 413, Kathmandu, Nepal Tel.: +977-1-4721112, Fax: +977-1-4720224 Email: ntrust@mail.com.np, Website: www.nepaltrust.org
<b>NTB</b>	<b>Nepal Tourism Board</b> Tourist Service Centre P.O. Box 11018, Bhrikutimandap, Kathmandu Nepal Tel: +977-1-5256909, 4269768, Fax: +977-1-4256910, 42269770 Webpage: www.welcomenepal.com
<b>OHCHR</b>	<b>Office of the United Nations High Commissioner for Human Rights</b> Museum Road, Chhauni G.P.O. Box 107, Kathmandu, Nepal Tel: +977-1-4280164, Fax: +977-1-4670721

<b>OXFAM</b>	<b>Oxfam International</b> P.O. Box 2500, Lagankhel Lalitpur Tel: +977-1-5523197, Fax: +977-1-5525620 Website: www.oxfam.org.uk
<b>SDC</b>	<b>Swiss Agency for Development and Cooperation</b> Ekantakuna, Jawalakhel Kathmandu, Nepal Tel: +977-1-5524927, Fax: +977-1-5525358 Website: www.sdc.org.np
<b>SIDC</b>	<b>Snowland Integrated Development Center</b>
<b>SNV</b>	<b>Netherlands Development Organisation</b> P.O. Box 1966, Bakhundole, Patan, Kathmandu, Nepal Tel: +977-1-5523444, Fax: +977-1-5523155 Email: snv@snv.org.np, Website: www.snv.nl
<b>TMI</b>	<b>The Mountain Institute</b> Baluwatar P.O. Box 2785, Kathmandu, Nepal Tel.: +977-1-4419356, 4414237, Fax: +977-1-4410073 Email: tmiregional@wlink.com.np, Website: www.mountain.org
<b>TRPAP</b>	<b>Tourism for Rural Poverty Alleviation Programme</b> Tourist Service Centre P.O. Box 11018, Bhrikutimandap, Kathmandu Nepal Tel: +977-1-5256909, 4269768, Fax: +977-1-4256910, 42269770 Email: info@trpap@ntb.org.np, Webpage: www.welcomenepal.com /trpap
<b>UNDP</b>	<b>United Nations Development Programme</b> UN House, Pulchowk P.O. Box 107, Kathmandu, Nepal Tel: 977-1-5523200, Fax: 977-1-5523991 Email: registry.np@undp.org, Website: www.undp.org.np
<b>UNESCO</b>	<b>United Nations Educational, Scientific and Cultural Organisation</b> Jawalakhel P.O. Box 14391, Lalitpur, Nepal Tel: +977-1-5554769, 5554439, Fax: +977-1-5554450 Email : kathmandu@unesco.org, Website: www.unesco.org/kathmandu / www.unesco.org.np
<b>UNICEF</b>	<b>United Nations Children's Fund</b> UN House, Harihar Bhawan, Pulchowk P.O. Box 1187, Kathmandu, Nepal Tel: +977-1-5523200, Fax: +977-1-5527280, 5535395 Email: unicef@unicef.org.np / kathmandu@unicef.org, Website: www.unicef.org
<b>WFP</b>	<b>World Food Programme</b> UN House Pulchowk P.O. Box 107, Kathmandu, Nepal Tel: +977-1-5542607, Fax: +977-1-5524101 Email: wfp.kathmandu@wfp.org, Website: www.wfp.org.np
<b>WWF</b>	<b>World Wide Fund for Nature</b> P.O. Box 7660 Baluwatar, Kathmandu Nepal Tel: +977-1-4434820, 4434970, 4410942, Fax: +977-1-4438458 Email: mns@wwfnepal.org.np / info@wwfnepal.org, Web Site: www.wwfnepal.org.np









